

**Anti-Cytochrome C CYCS Rabbit Monoclonal Antibody**  
**Catalog # ABO14124****Specification**

---

**Anti-Cytochrome C CYCS Rabbit Monoclonal Antibody - Product Information**

Application	WB, IHC, IF, ICC, IP
Primary Accession	<a href="#">P99999</a>
Host	Rabbit
Isotype	Rabbit IgG
Reactivity	Rat, Human, Mouse
Clonality	Monoclonal
Format	Liquid

**Description**

Anti-Cytochrome C CYCS Rabbit Monoclonal Antibody . Tested in WB, IHC, ICC/IF, IP applications.  
This antibody reacts with Human, Mouse, Rat.

**Anti-Cytochrome C CYCS Rabbit Monoclonal Antibody - Additional Information**

**Gene ID** 54205

**Other Names**

Cytochrome c, CYCS, CYC

**Calculated MW**

11749 MW KDa

**Application Details**

WB 1:1000-1:2000<br>IHC 1:50-1:200<br>ICC/IF 1:50-1:200<br>IP 1:30

**Subcellular Localization**

Mitochondrion intermembrane space. Loosely associated with the inner membrane.

**Contents**

Rabbit IgG in phosphate buffered saline, pH 7.4, 150mM NaCl, 0.02% sodium azide and 50% glycerol, 0.4-0.5mg/ml BSA.

**Immunogen**

A synthesized peptide derived from human Cytochrome C

**Purification**

Affinity-chromatography

**Storage**

**Store at -20°C for one year. For short term storage and frequent use, store at 4°C for up to one month. Avoid repeated freeze-thaw cycles.**

**Anti-Cytochrome C CYCS Rabbit Monoclonal Antibody - Protein Information**

**Name** CYCS

**Synonyms** CYC

**Function**

Electron carrier protein. The oxidized form of the cytochrome c heme group can accept an electron from the heme group of the cytochrome c1 subunit of cytochrome reductase. Cytochrome c then transfers this electron to the cytochrome oxidase complex, the final protein carrier in the mitochondrial electron-transport chain.

**Cellular Location**

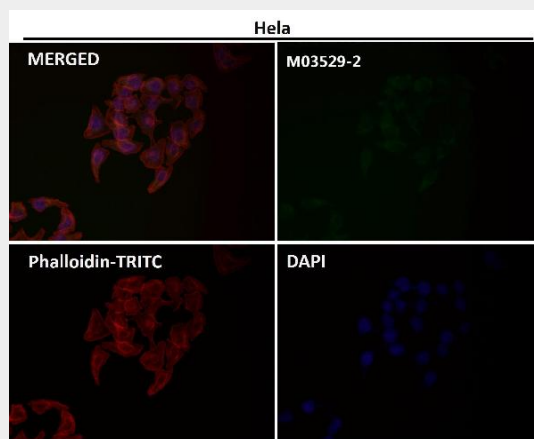
Mitochondrion intermembrane space. Note=Loosely associated with the inner membrane

**Anti-Cytochrome C CYCS Rabbit Monoclonal Antibody - Protocols**

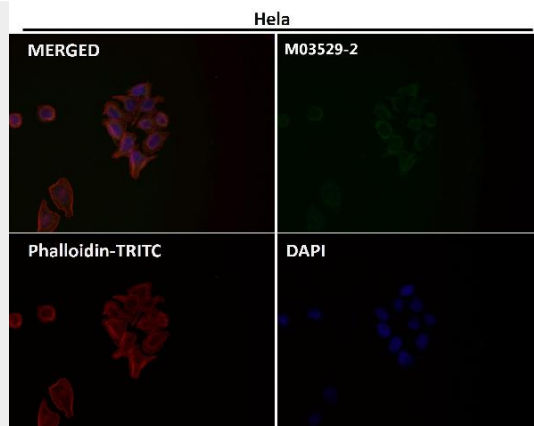
Provided below are standard protocols that you may find useful for product applications.

- [Western Blot](#)
- [Blocking Peptides](#)
- [Dot Blot](#)
- [Immunohistochemistry](#)
- [Immunofluorescence](#)
- [Immunoprecipitation](#)
- [Flow Cytometry](#)
- [Cell Culture](#)

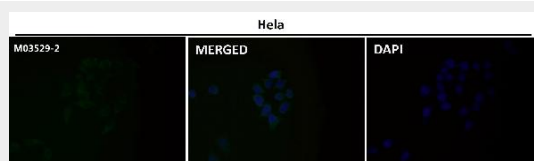
**Anti-Cytochrome C CYCS Rabbit Monoclonal Antibody - Images**



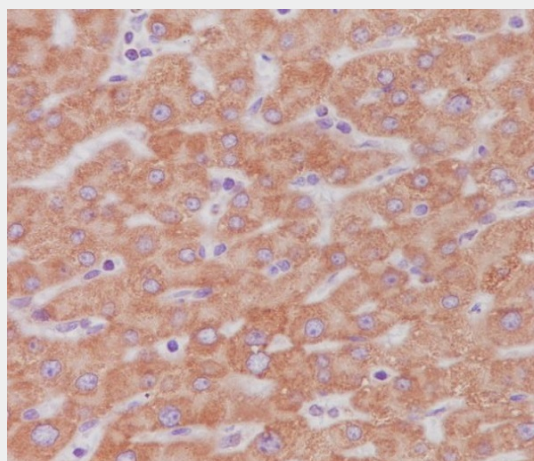
Immunofluorescent analysis using the Antibody at 1:50 dilution.



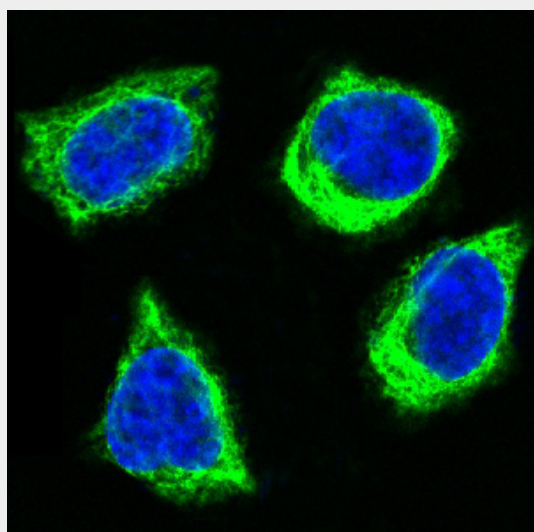
Immunofluorescent analysis using the Antibody at 1:50 dilution.



Immunofluorescent analysis using the Antibody at 1:50 dilution.



Immunohistochemical analysis of paraffin-embedded human liver, using Cytochrome C Antibody.



# Immunofluorescent analysis of Hela cells, using Cytochrome C Antibody.

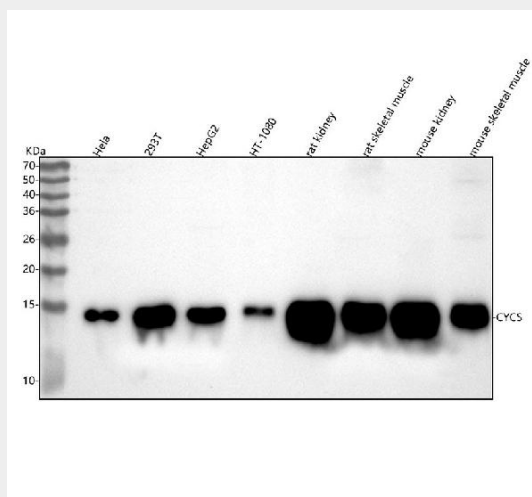


Figure 1. Western blot analysis of CYCS using anti-CYCS antibody (M03529-2).

Electrophoresis was performed on a 5-20% SDS-PAGE gel at 70V (Stacking gel) / 90V (Resolving gel) for 2-3 hours. The sample well of each lane was loaded with 30 ug of sample under reducing conditions.

Lane 1: human Hela whole cell lysates,

Lane 2: human 293T whole cell lysates,

Lane 3: human HepG2 whole cell lysates,

Lane 4: human HT-1080 whole cell lysates,

Lane 5: rat kidney tissue lysates,

Lane 6: rat skeletal muscle tissue lysates,

Lane 7: mouse kidney tissue lysates,

Lane 8: mouse skeletal muscle tissue lysates.

After electrophoresis, proteins were transferred to a nitrocellulose membrane at 150 mA for 50-90 minutes. Blocked the membrane with 5% non-fat milk/TBS for 1.5 hour at RT. The membrane was incubated with rabbit anti-CYCS antigen affinity purified monoclonal antibody (Catalog # M03529-2) at 1:1000 overnight at 4°C, then washed with TBS-0.1%Tween 3 times with 5 minutes each and probed with a goat anti-rabbit IgG-HRP secondary antibody at a dilution of 1:500 for 1.5 hour at RT. The signal is developed using an Enhanced Chemiluminescent detection (ECL) kit (Catalog # EK1002) with Tanon 5200 system. A specific band was detected for CYCS at approximately 14 kDa. The expected band size for CYCS is at 12 kDa.