

**Anti-Cytochrome C CYCS Rabbit Monoclonal Antibody**  
Catalog # ABO14123**Specification**

---

**Anti-Cytochrome C CYCS Rabbit Monoclonal Antibody - Product Information**

Application	WB, IHC
Primary Accession	<a href="#">P99999</a>
Host	Rabbit
Isotype	Rabbit IgG
Reactivity	Rat, Human, Mouse
Clonality	Monoclonal
Format	Liquid

**Description**

Anti-Cytochrome C CYCS Rabbit Monoclonal Antibody . Tested in WB, IHC applications. This antibody reacts with Human, Mouse, Rat.

**Anti-Cytochrome C CYCS Rabbit Monoclonal Antibody - Additional Information**

**Gene ID** 54205

**Other Names**

Cytochrome c, CYCS, CYC

**Calculated MW**

11749 MW KDa

**Application Details**

WB 1:500-1:2000<br>IHC 1:50-1:200

**Subcellular Localization**

Mitochondrion intermembrane space. Loosely associated with the inner membrane.

**Contents**

Rabbit IgG in phosphate buffered saline, pH 7.4, 150mM NaCl, 0.02% sodium azide and 50% glycerol, 0.4-0.5mg/ml BSA.

**Immunogen**

A synthesized peptide derived from human Cytochrome C

**Purification**

Affinity-chromatography

Storage

**Store at -20°C for one year. For short term storage and frequent use, store at 4°C for up to one month. Avoid repeated freeze-thaw cycles.**

**Anti-Cytochrome C CYCS Rabbit Monoclonal Antibody - Protein Information**

**Name** CYCS

**Synonyms** CYC

**Function**

Electron carrier protein. The oxidized form of the cytochrome c heme group can accept an electron from the heme group of the cytochrome c1 subunit of cytochrome reductase. Cytochrome c then transfers this electron to the cytochrome oxidase complex, the final protein carrier in the mitochondrial electron-transport chain.

**Cellular Location**

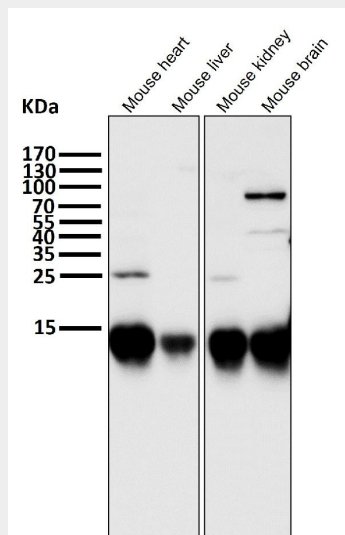
Mitochondrion intermembrane space. Note=Loosely associated with the inner membrane

**Anti-Cytochrome C CYCS Rabbit Monoclonal Antibody - Protocols**

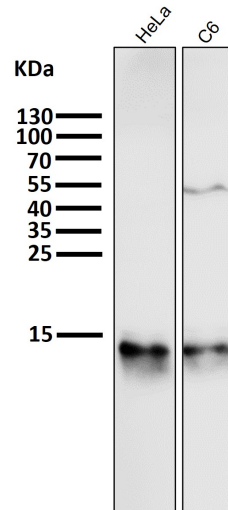
Provided below are standard protocols that you may find useful for product applications.

- [Western Blot](#)
- [Blocking Peptides](#)
- [Dot Blot](#)
- [Immunohistochemistry](#)
- [Immunofluorescence](#)
- [Immunoprecipitation](#)
- [Flow Cytometry](#)
- [Cell Culture](#)

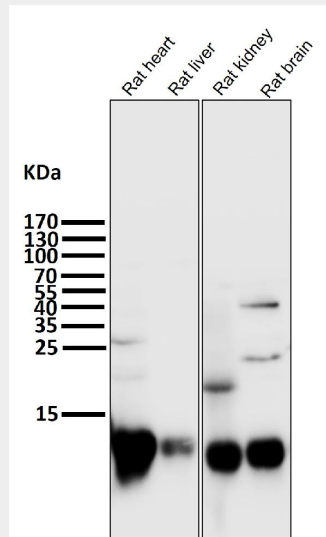
**Anti-Cytochrome C CYCS Rabbit Monoclonal Antibody - Images**



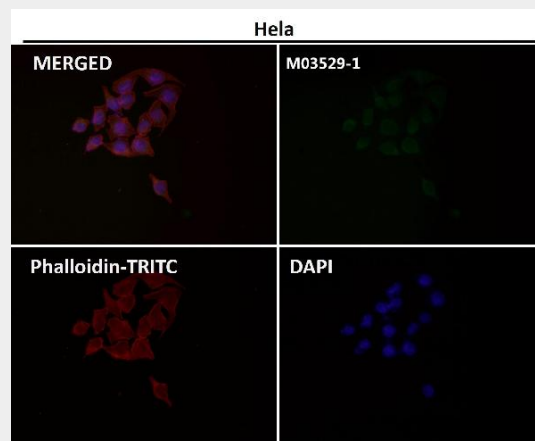
All lanes use the Antibody at 1:5K dilution for 1 hour at room temperature.



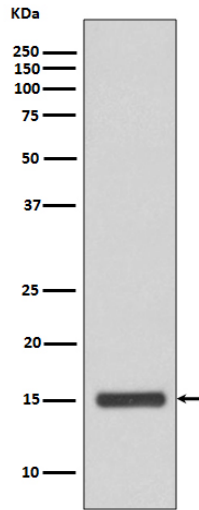
All lanes use the Antibody at 1:5K dilution for 1 hour at room temperature.



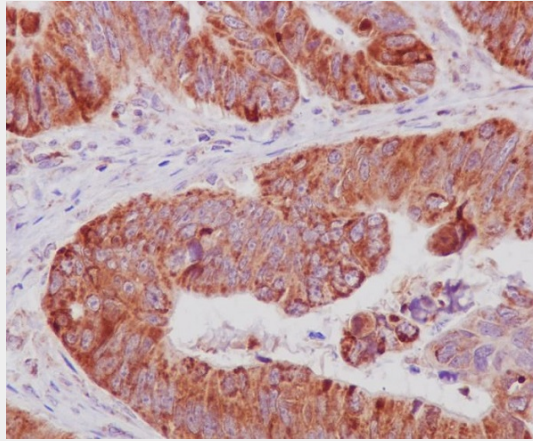
All lanes use the Antibody at 1:5K dilution for 1 hour at room temperature.



Immunofluorescent analysis using the Antibody at 1:50 dilution.



Western blot analysis of Cytochrome C expression in HeLa cell lysate.



Immunohistochemical analysis of paraffin-embedded human colonic cancer, using Cytochrome C Antibody.