

**Anti-beta Tubulin TUBB Rabbit Monoclonal Antibody**  
Catalog # ABO14110**Specification****Anti-beta Tubulin TUBB Rabbit Monoclonal Antibody - Product Information**

Application	WB, IHC, IF, ICC, FC
Primary Accession	<a href="#">P07437</a>
Host	Rabbit
Isotype	Rabbit IgG
Reactivity	Rat, Human, Mouse
Clonality	Monoclonal
Format	Liquid

**Description**

Anti-beta Tubulin TUBB Rabbit Monoclonal Antibody . Tested in WB, IHC, ICC/IF, Flow Cytometry applications. This antibody reacts with Human, Mouse, Rat.

**Anti-beta Tubulin TUBB Rabbit Monoclonal Antibody - Additional Information**

**Gene ID** 203068

**Other Names**

Tubulin beta chain, Tubulin beta-5 chain, TUBB, TUBB5

**Calculated MW**

49671 MW KDa

**Application Details**

WB 1:3000-1:20000<br>IHC 1:50-1:200<br>ICC/IF 1:50-1:200<br>FC 1:100

**Subcellular Localization**

Cytoplasm, cytoskeleton.

**Tissue Specificity**

Ubiquitously expressed with highest levels in spleen, thymus and immature brain..

**Contents**

Rabbit IgG in phosphate buffered saline, pH 7.4, 150mM NaCl, 0.02% sodium azide and 50% glycerol, 0.4-0.5mg/ml BSA.

**Immunogen**

A synthesized peptide derived from human beta Tubulin

**Purification**

Affinity-chromatography

**Storage**

**Store at -20°C for one year. For short term storage and frequent use, store at 4°C for up to one month. Avoid repeated freeze-thaw cycles.**

## Anti-beta Tubulin TUBB Rabbit Monoclonal Antibody - Protein Information

**Name** TUBB

**Synonyms** TUBB5

### Function

Tubulin is the major constituent of microtubules, a cylinder consisting of laterally associated linear protofilaments composed of alpha- and beta-tubulin heterodimers. Microtubules grow by the addition of GTP-tubulin dimers to the microtubule end, where a stabilizing cap forms. Below the cap, tubulin dimers are in GDP-bound state, owing to GTPase activity of alpha-tubulin.

### Cellular Location

Cytoplasm, cytoskeleton

### Tissue Location

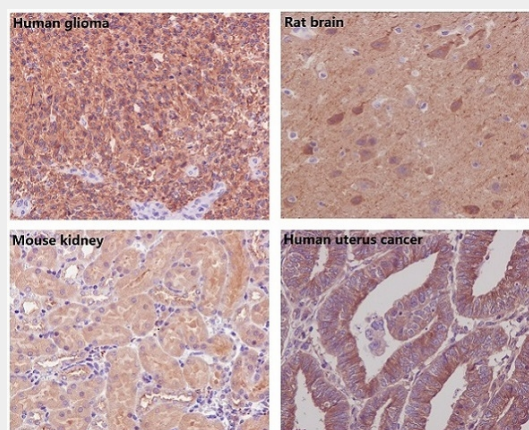
Ubiquitously expressed with highest levels in spleen, thymus and immature brain.

## Anti-beta Tubulin TUBB Rabbit Monoclonal Antibody - Protocols

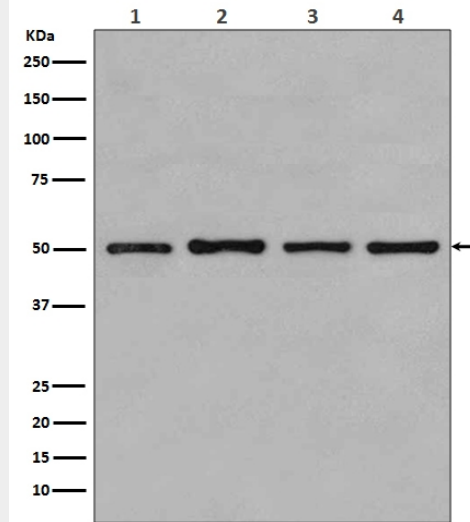
Provided below are standard protocols that you may find useful for product applications.

- [Western Blot](#)
- [Blocking Peptides](#)
- [Dot Blot](#)
- [Immunohistochemistry](#)
- [Immunofluorescence](#)
- [Immunoprecipitation](#)
- [Flow Cytometry](#)
- [Cell Culture](#)

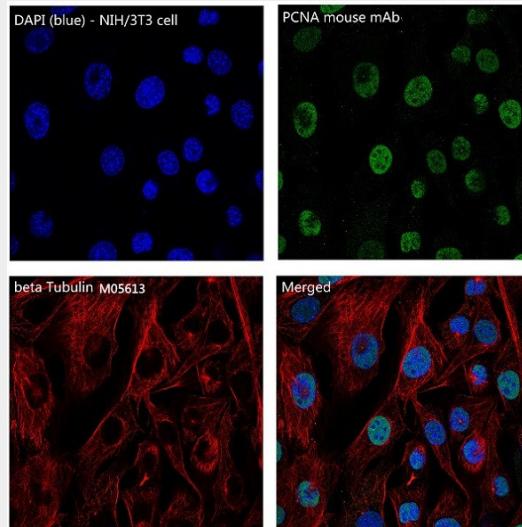
## Anti-beta Tubulin TUBB Rabbit Monoclonal Antibody - Images



Immunohistochemical analysis of paraffin-embedded (1) Human glioma; (2) Rat brain; (3) Mouse kidney; (4) Human uterus cancer, using beta Tubulin Antibody.



Western blot analysis of beta Tubulin expression in (1) MCF-7 cell lysate; (2) COS-1 cell lysate; (3) Jurkat cell lysate; (4) HeLa cell lysate.



Immunofluorescent analysis of NIH/3T3 cells, using beta Tubulin Antibody.