

Anti-Perilipin A PLIN1 Rabbit Monoclonal Antibody Catalog # ABO14104

Specification

Anti-Perilipin A PLIN1 Rabbit Monoclonal Antibody - Product Information

Application	WB, IF, ICC
Primary Accession	O60240
Host	Rabbit
Isotype	Rabbit IgG
Reactivity	Human, Mouse
Clonality	Monoclonal
Format	Liquid

Description

Anti-Perilipin A PLIN1 Rabbit Monoclonal Antibody . Tested in WB, ICC/IF applications. This antibody reacts with Human, Mouse.

Anti-Perilipin A PLIN1 Rabbit Monoclonal Antibody - Additional Information

Gene ID 5346

Other Names

Perilipin-1, Lipid droplet-associated protein, PLIN1, PERI, PLIN

Calculated MW

55990 MW KDa

Application Details

WB 1:1000-1:5000
ICC/IF 1:50-1:200

Subcellular Localization

Endoplasmic reticulum. Lipid droplet. Lipid droplet surface- associated.

Tissue Specificity

Adipocytes..

Contents

Rabbit IgG in phosphate buffered saline, pH 7.4, 150mM NaCl, 0.02% sodium azide and 50% glycerol, 0.4-0.5mg/ml BSA.

Immunogen

A synthesized peptide derived from human Perilipin A

Purification

Affinity-chromatography

Storage

Store at -20°C for one year. For short term storage and frequent use, store at 4°C for up to one month. Avoid repeated freeze-thaw cycles.

Anti-Perilipin A PLIN1 Rabbit Monoclonal Antibody - Protein Information

Name PLIN1

Synonyms PERI, PLIN

Function

Modulator of adipocyte lipid metabolism. Coats lipid storage droplets to protect them from breakdown by hormone-sensitive lipase (HSL). Its absence may result in leanness. Plays a role in unilocular lipid droplet formation by activating CIDEC. Their interaction promotes lipid droplet enlargement and directional net neutral lipid transfer. May modulate lipolysis and triglyceride levels.

Cellular Location

Endoplasmic reticulum. Lipid droplet. Note=Lipid droplet surface-associated.

Tissue Location

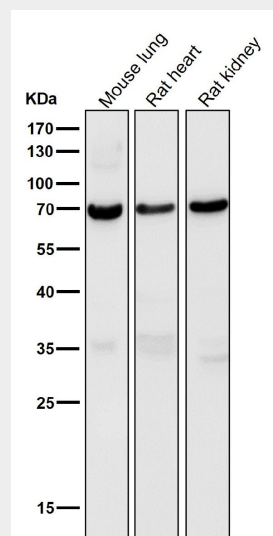
Detected in adipocytes from white adipose tissue (at protein level) (PubMed:27832861). Detected in visceral adipose tissue and mammary gland (PubMed:9521880)

Anti-Perilipin A PLIN1 Rabbit Monoclonal Antibody - Protocols

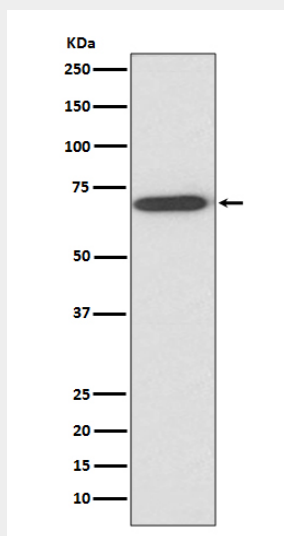
Provided below are standard protocols that you may find useful for product applications.

- [Western Blot](#)
- [Blocking Peptides](#)
- [Dot Blot](#)
- [Immunohistochemistry](#)
- [Immunofluorescence](#)
- [Immunoprecipitation](#)
- [Flow Cytometry](#)
- [Cell Culture](#)

Anti-Perilipin A PLIN1 Rabbit Monoclonal Antibody - Images



All lanes use the Antibody at 1:3K dilution for 1 hour at room temperature.



Western blot analysis of Perilipin A expression in human fetal liver lysate.