

## Anti-Haptoglobin HP Rabbit Monoclonal Antibody Catalog # ABO14103

### Specification

---

#### Anti-Haptoglobin HP Rabbit Monoclonal Antibody - Product Information

Application	WB
Primary Accession	<a href="#">P00738</a>
Host	Rabbit
Isotype	Rabbit IgG
Reactivity	Rat, Human, Mouse
Clonality	Monoclonal
Format	Liquid

#### Description

Anti-Haptoglobin HP Rabbit Monoclonal Antibody . Tested in WB application. This antibody reacts with Human, Mouse, Rat.

#### Anti-Haptoglobin HP Rabbit Monoclonal Antibody - Additional Information

**Gene ID** 3240

#### Other Names

Haptoglobin, Zonulin, Haptoglobin alpha chain, Haptoglobin beta chain, HP

#### Calculated MW

45205 MW KDa

#### Application Details

WB 1:500-1:2000

#### Subcellular Localization

Secreted.

#### Tissue Specificity

Expressed by the liver and secreted in plasma.

#### Contents

Rabbit IgG in phosphate buffered saline, pH 7.4, 150mM NaCl, 0.02% sodium azide and 50% glycerol, 0.4-0.5mg/ml BSA.

#### Immunogen

A synthesized peptide derived from human Haptoglobin

#### Purification

Affinity-chromatography

Storage

**Store at -20°C for one year. For short term storage and frequent use, store at 4°C for up to one month. Avoid repeated freeze-thaw cycles.**

## Anti-Haptoglobin HP Rabbit Monoclonal Antibody - Protein Information

**Name** HP

### Function

As a result of hemolysis, hemoglobin is found to accumulate in the kidney and is secreted in the urine. Haptoglobin captures, and combines with free plasma hemoglobin to allow hepatic recycling of heme iron and to prevent kidney damage. Haptoglobin also acts as an antioxidant, has antibacterial activity, and plays a role in modulating many aspects of the acute phase response. Hemoglobin/haptoglobin complexes are rapidly cleared by the macrophage CD163 scavenger receptor expressed on the surface of liver Kupfer cells through an endocytic lysosomal degradation pathway.

### Cellular Location

Secreted.

### Tissue Location

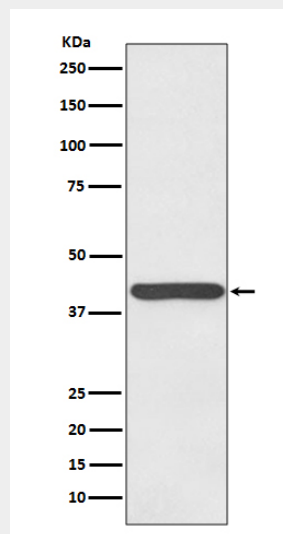
Expressed by the liver and secreted in plasma.

## Anti-Haptoglobin HP Rabbit Monoclonal Antibody - Protocols

Provided below are standard protocols that you may find useful for product applications.

- [Western Blot](#)
- [Blocking Peptides](#)
- [Dot Blot](#)
- [Immunohistochemistry](#)
- [Immunofluorescence](#)
- [Immunoprecipitation](#)
- [Flow Cytometry](#)
- [Cell Culture](#)

## Anti-Haptoglobin HP Rabbit Monoclonal Antibody - Images



Western blot analysis of Haptoglobin expression in human plasma lysate.