

## Anti-Collagen VI COL6A1 Rabbit Monoclonal Antibody Catalog # ABO14090

### Specification

---

#### Anti-Collagen VI COL6A1 Rabbit Monoclonal Antibody - Product Information

Application	WB, IHC, IF, ICC
Primary Accession	<a href="#">P12109</a>
Host	Rabbit
Isotype	Rabbit IgG
Reactivity	Rat, Human, Mouse
Clonality	Monoclonal
Format	Liquid

#### Description

Anti-Collagen VI COL6A1 Rabbit Monoclonal Antibody . Tested in WB, IHC, ICC/IF applications. This antibody reacts with Human, Mouse, Rat.

#### Anti-Collagen VI COL6A1 Rabbit Monoclonal Antibody - Additional Information

**Gene ID** 1291

#### Other Names

Collagen alpha-1(VI) chain, COL6A1

#### Calculated MW

108529 MW KDa

#### Application Details

WB 1:1000-1:2000<br>IHC 1:50-1:200<br>ICC/IF 1:50-1:200

#### Subcellular Localization

Secreted, extracellular space, extracellular matrix.

#### Contents

Rabbit IgG in phosphate buffered saline, pH 7.4, 150mM NaCl, 0.02% sodium azide and 50% glycerol, 0.4-0.5mg/ml BSA.

#### Immunogen

A synthesized peptide derived from human Collagen VI

#### Purification

Affinity-chromatography

Storage

**Store at -20°C for one year. For short term storage and frequent use, store at 4°C for up to one month. Avoid repeated freeze-thaw cycles.**

#### Anti-Collagen VI COL6A1 Rabbit Monoclonal Antibody - Protein Information

**Name** COL6A1

**Function**

Collagen VI acts as a cell-binding protein.

**Cellular Location**

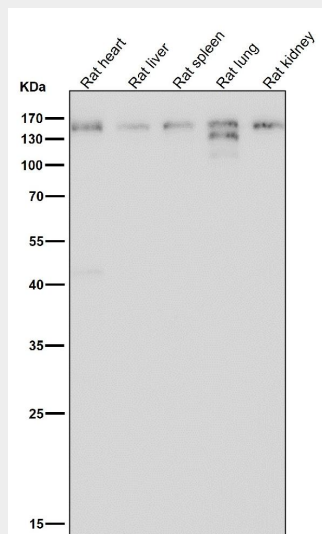
Secreted, extracellular space, extracellular matrix

**Anti-Collagen VI COL6A1 Rabbit Monoclonal Antibody - Protocols**

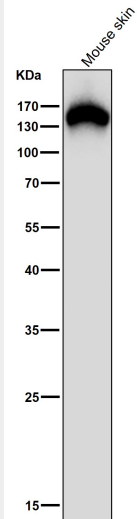
Provided below are standard protocols that you may find useful for product applications.

- [Western Blot](#)
- [Blocking Peptides](#)
- [Dot Blot](#)
- [Immunohistochemistry](#)
- [Immunofluorescence](#)
- [Immunoprecipitation](#)
- [Flow Cytometry](#)
- [Cell Culture](#)

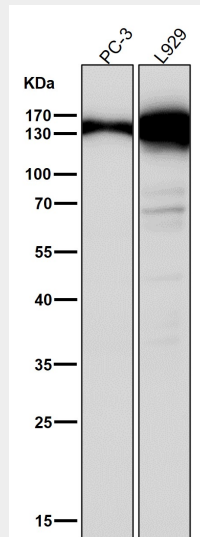
**Anti-Collagen VI COL6A1 Rabbit Monoclonal Antibody - Images**



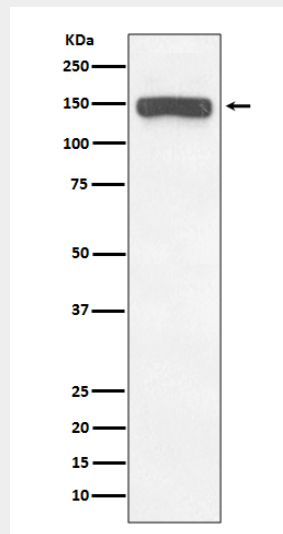
All lanes use the Antibody at 1:3K dilution for 1 hour at room temperature.



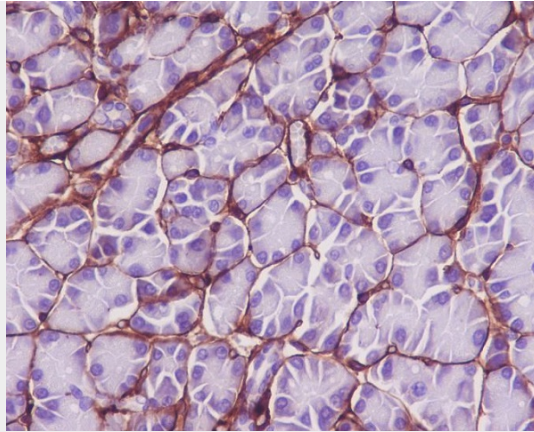
All lanes use the Antibody at 1:3K dilution for 1 hour at room temperature.



All lanes use the Antibody at 1:3K dilution for 1 hour at room temperature.



Western blot analysis of Collagen VI expression in Human brain lysate.



Immunohistochemical analysis of paraffin-embedded rat pancreas, using Collagen VI Antibody.