

Anti-Smac/Diablo Rabbit Monoclonal Antibody
Catalog # ABO14084**Specification****Anti-Smac/Diablo Rabbit Monoclonal Antibody - Product Information**

Application	WB, IHC, IF, ICC, IP, FC
Primary Accession	Q9NR28
Host	Rabbit
Isotype	Rabbit IgG
Reactivity	Rat, Human, Mouse
Clonality	Monoclonal
Format	Liquid

Description

Anti-Smac/Diablo Rabbit Monoclonal Antibody . Tested in WB, IHC, ICC/IF, IP, Flow Cytometry applications. This antibody reacts with Human, Mouse, Rat.

Anti-Smac/Diablo Rabbit Monoclonal Antibody - Additional Information

Gene ID 56616

Other Names

Diablo IAP-binding mitochondrial protein {ECO:0000312|HGNC:HGNC:21528}, Diablo homolog, mitochondrial {ECO:0000312|HGNC:HGNC:21528}, Direct IAP-binding protein with low pI {ECO:0000312|HGNC:HGNC:21528}, Second mitochondria-derived activator of caspase, Smac, Diablo IAP-binding mitochondrial protein, cleaved form, DIABLO ([HGNC:21528](http://www.genenames.org/cgi-bin/gene_symbol_report?hgnc_id=21528))

Calculated MW

27131 MW KDa

Application Details

WB 1:1000-1:5000
IHC 1:50-1:200
ICC/IF 1:100-1:500
IP 1:50
FC 1:50

Subcellular Localization

Mitochondrion. Released into the cytosol when cells undergo apoptosis.

Tissue Specificity

Ubiquitously expressed with highest expression in testis. Expression is also high in heart, liver, kidney, spleen, prostate and ovary. Low in brain, lung, thymus and peripheral blood leukocytes. Isoform 3 is ubiquitously expressed..

Contents

Rabbit IgG in phosphate buffered saline, pH 7.4, 150mM NaCl, 0.02% sodium azide and 50% glycerol, 0.4-0.5mg/ml BSA.

Immunogen

A synthesized peptide derived from human Smac/Diablo

Purification

Affinity-chromatography

Storage**Store at -20°C for one year. For short term storage and frequent use, store at 4°C for up to one month. Avoid repeated freeze-thaw cycles.****Anti-Smac/Diablo Rabbit Monoclonal Antibody - Protein Information****Name** DIABLO ([HGNC:21528](#))**Function**

Promotes apoptosis by activating caspases in the cytochrome c/Apaf-1/caspase-9 pathway. Acts by opposing the inhibitory activity of inhibitor of apoptosis proteins (IAP). Inhibits the activity of BIRC6/BRUCE by inhibiting its binding to caspases (PubMed:15200957, PubMed:36758104, PubMed:36758105, PubMed:36758106).

Cellular Location

Mitochondrion. Cytoplasm, cytosol Note=Released into the cytosol in a PARL-dependent manner when cells undergo apoptosis.

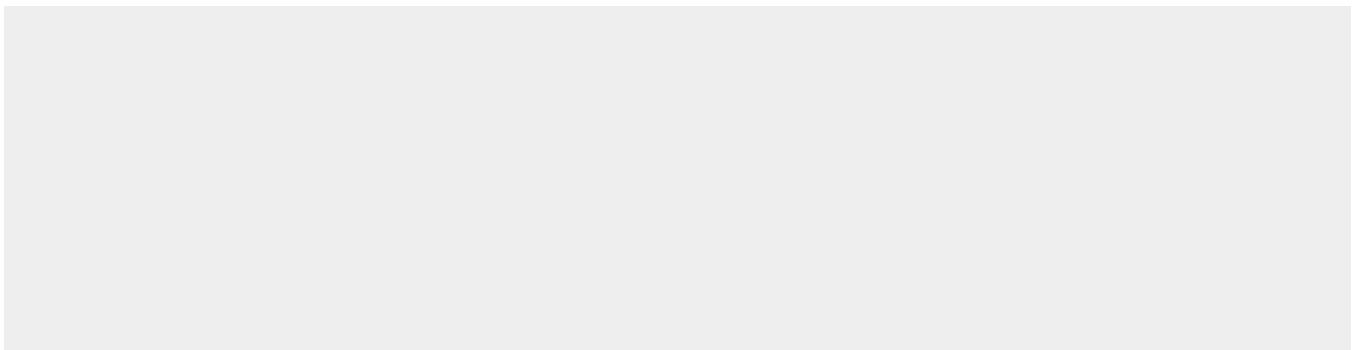
Tissue Location

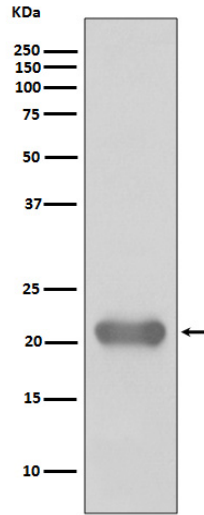
Ubiquitously expressed with highest expression in testis. Expression is also high in heart, liver, kidney, spleen, prostate and ovary. Low in brain, lung, thymus and peripheral blood leukocytes. Isoform 3 is ubiquitously expressed

Anti-Smac/Diablo Rabbit Monoclonal Antibody - Protocols

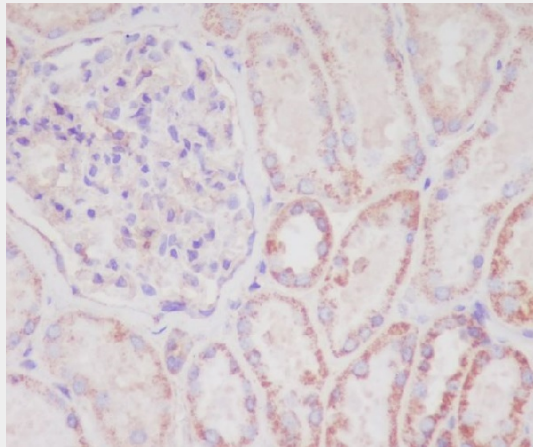
Provided below are standard protocols that you may find useful for product applications.

- [Western Blot](#)
- [Blocking Peptides](#)
- [Dot Blot](#)
- [Immunohistochemistry](#)
- [Immunofluorescence](#)
- [Immunoprecipitation](#)
- [Flow Cytometry](#)
- [Cell Culture](#)

Anti-Smac/Diablo Rabbit Monoclonal Antibody - Images



Western blot analysis of Smac/Diablo expression in Jurkat cell lysate.



Immunohistochemical analysis of paraffin-embedded human kidney, using Smac/Diablo Antibody.