

## Anti-Annexin A10 Rabbit Monoclonal Antibody Catalog # ABO14083

### Specification

---

#### Anti-Annexin A10 Rabbit Monoclonal Antibody - Product Information

Application	WB
Primary Accession	<a href="#">O9UJ72</a>
Host	Rabbit
Isotype	Rabbit IgG
Reactivity	Rat, Human, Mouse
Clonality	Monoclonal
Format	Liquid

#### Description

Anti-Annexin A10 Rabbit Monoclonal Antibody . Tested in WB application. This antibody reacts with Human, Mouse, Rat.

#### Anti-Annexin A10 Rabbit Monoclonal Antibody - Additional Information

**Gene ID** 11199

#### Other Names

Annexin A10, Annexin-10, Annexin-14, ANXA10, ANX14

#### Calculated MW

37278 MW KDa

#### Application Details

WB 1:500-1:2000

#### Contents

Rabbit IgG in phosphate buffered saline, pH 7.4, 150mM NaCl, 0.02% sodium azide and 50% glycerol, 0.4-0.5mg/ml BSA.

#### Immunogen

A synthesized peptide derived from human Annexin A10

#### Purification

Affinity-chromatography

Storage

**Store at -20°C for one year. For short term storage and frequent use, store at 4°C for up to one month. Avoid repeated freeze-thaw cycles.**

#### Anti-Annexin A10 Rabbit Monoclonal Antibody - Protein Information

**Name** ANXA10

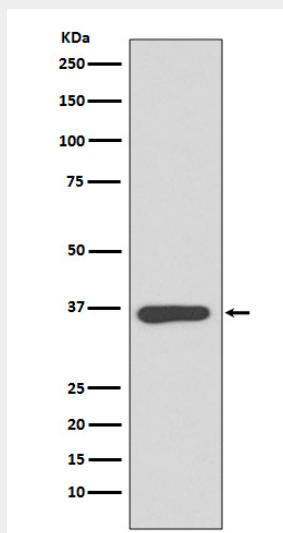
## Synonyms ANX14

### Anti-Annexin A10 Rabbit Monoclonal Antibody - Protocols

Provided below are standard protocols that you may find useful for product applications.

- [Western Blot](#)
- [Blocking Peptides](#)
- [Dot Blot](#)
- [Immunohistochemistry](#)
- [Immunofluorescence](#)
- [Immunoprecipitation](#)
- [Flow Cytometry](#)
- [Cell Culture](#)

### Anti-Annexin A10 Rabbit Monoclonal Antibody - Images



Western blot analysis of Annexin A10 expression in HeLa cell lysate.