

Anti-Fibronectin FN1 Rabbit Monoclonal Antibody
Catalog # ABO14081

Specification

Anti-Fibronectin FN1 Rabbit Monoclonal Antibody - Product Information

Application	WB, IHC, IF, ICC
Primary Accession	P02751
Host	Rabbit
Isotype	Rabbit IgG
Reactivity	Human
Clonality	Monoclonal
Format	Liquid

Description

Anti-Fibronectin FN1 Rabbit Monoclonal Antibody . Tested in WB, IHC, ICC/IF applications. This antibody reacts with Human.

Anti-Fibronectin FN1 Rabbit Monoclonal Antibody - Additional Information

Gene ID 2335

Other Names

Fibronectin, FN, Cold-insoluble globulin, CIG, Anastellin, Ugl-Y1, Ugl-Y2, Ugl-Y3, FN1 (http://www.genenames.org/cgi-bin/gene_symbol_report?hgnc_id=3778), FN

Calculated MW

262625 MW KDa

Application Details

WB 1:500-1:2000
IHC 1:50-1:200
ICC/IF 1:50-1:200

Subcellular Localization

Secreted, extracellular space, extracellular matrix.

Tissue Specificity

Plasma FN (soluble dimeric form) is secreted by hepatocytes. Cellular FN (dimeric or cross-linked multimeric forms), made by fibroblasts, epithelial and other cell types, is deposited as fibrils in the extracellular matrix. Ugl-Y1, Ugl-Y2 and Ugl-Y3 are found in urine..

Contents

Rabbit IgG in phosphate buffered saline, pH 7.4, 150mM NaCl, 0.02% sodium azide and 50% glycerol, 0.4-0.5mg/ml BSA.

Immunogen

A synthesized peptide derived from human Fibronectin

Purification

Affinity-chromatography

Storage

Store at -20°C for one year. For short term storage and frequent use, store at 4°C for up to one month. Avoid repeated freeze-thaw cycles.

Anti-Fibronectin FN1 Rabbit Monoclonal Antibody - Protein Information

Name FN1 ([HGNC:3778](#))

Synonyms FN**Function**

Fibronectins bind cell surfaces and various compounds including collagen, fibrin, heparin, DNA, and actin (PubMed:[3024962](http://www.uniprot.org/citations/3024962), PubMed:[3593230](http://www.uniprot.org/citations/3593230), PubMed:[3900070](http://www.uniprot.org/citations/3900070), PubMed:[7989369](http://www.uniprot.org/citations/7989369)). Fibronectins are involved in cell adhesion, cell motility, opsonization, wound healing, and maintenance of cell shape (PubMed:[3024962](http://www.uniprot.org/citations/3024962), PubMed:[3593230](http://www.uniprot.org/citations/3593230), PubMed:[3900070](http://www.uniprot.org/citations/3900070), PubMed:[7989369](http://www.uniprot.org/citations/7989369)). Involved in osteoblast compaction through the fibronectin fibrillogenesis cell-mediated matrix assembly process, essential for osteoblast mineralization (By similarity). Participates in the regulation of type I collagen deposition by osteoblasts (By similarity). Acts as a ligand for the LILRB4 receptor, inhibiting FCGR1A/CD64-mediated monocyte activation (PubMed:[34089617](http://www.uniprot.org/citations/34089617)).

Cellular Location

Secreted, extracellular space, extracellular matrix. Secreted {ECO:0000250|UniProtKB:P11276}

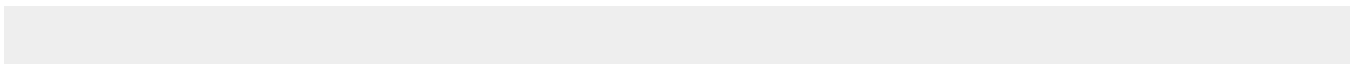
Tissue Location

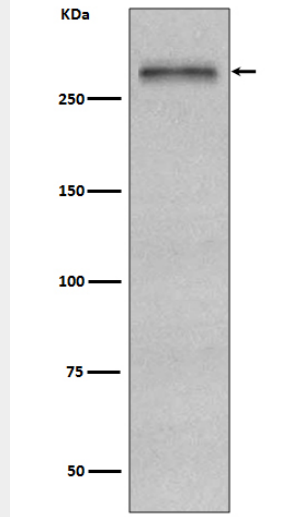
Expressed in the inner limiting membrane and around blood vessels in the retina (at protein level) (PubMed:29777959) Plasma FN (soluble dimeric form) is secreted by hepatocytes. Cellular FN (dimeric or cross-linked multimeric forms), made by fibroblasts, epithelial and other cell types, is deposited as fibrils in the extracellular matrix. Ugl-Y1, Ugl-Y2 and Ugl-Y3 are found in urine (PubMed:17614963).

Anti-Fibronectin FN1 Rabbit Monoclonal Antibody - Protocols

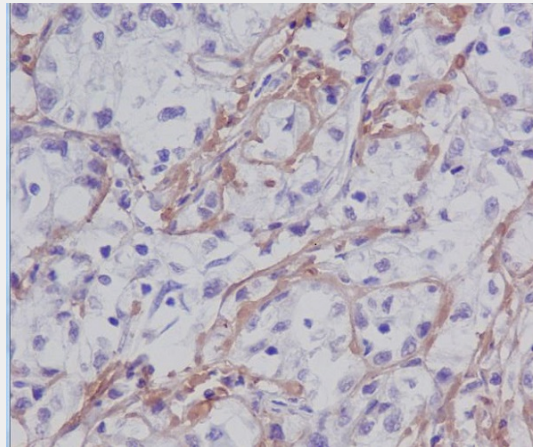
Provided below are standard protocols that you may find useful for product applications.

- [Western Blot](#)
- [Blocking Peptides](#)
- [Dot Blot](#)
- [Immunohistochemistry](#)
- [Immunofluorescence](#)
- [Immunoprecipitation](#)
- [Flow Cytometry](#)
- [Cell Culture](#)

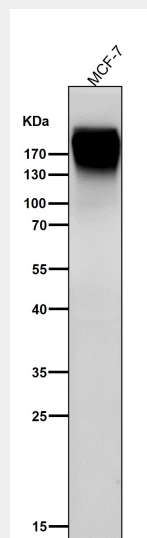
Anti-Fibronectin FN1 Rabbit Monoclonal Antibody - Images



Western blot analysis of Fibronectin expression in HepG2 cell lysate.



Immunohistochemical analysis of paraffin-embedded human liver cancer, using Fibronectin Antibody.



All lanes use the Antibody at 1:5K dilution for 1 hour at room temperature.