

Anti-Transferrin TF Rabbit Monoclonal Antibody
Catalog # ABO14076**Specification**

Anti-Transferrin TF Rabbit Monoclonal Antibody - Product Information

Application	WB, IHC, FC
Primary Accession	P02787
Host	Rabbit
Isotype	Rabbit IgG
Reactivity	Human
Clonality	Monoclonal
Format	Liquid

Description

Anti-Transferrin TF Rabbit Monoclonal Antibody . Tested in WB, IHC, Flow Cytometry applications.
This antibody reacts with Human.

Anti-Transferrin TF Rabbit Monoclonal Antibody - Additional Information

Gene ID 7018

Other Names

Serotransferrin, Transferrin, Beta-1 metal-binding globulin, Siderophilin, TF (HGNC:11740)

Calculated MW

77064 MW KDa

Application Details

WB 1:500-1:2000
IHC 1:50-1:200
FC 1:50

Subcellular Localization

Secreted.

Tissue Specificity

Expressed by the liver and secreted in plasma.

Contents

Rabbit IgG in phosphate buffered saline, pH 7.4, 150mM NaCl, 0.02% sodium azide and 50% glycerol, 0.4-0.5mg/ml BSA.

Immunogen

A synthesized peptide derived from human Transferrin

Purification

Affinity-chromatography

Storage

Store at -20°C for one year. For short term storage and frequent use, store at 4°C for

up to one month. Avoid repeated
freeze-thaw cycles.

Anti-Transferrin TF Rabbit Monoclonal Antibody - Protein Information

Name TF ([HGNC:11740](#))

Function

Transferrins are iron binding transport proteins which can bind two Fe(3+) ions in association with the binding of an anion, usually bicarbonate. It is responsible for the transport of iron from sites of absorption and heme degradation to those of storage and utilization. Serum transferrin may also have a further role in stimulating cell proliferation. (Microbial infection) Serves as an iron source for parasite T.brucei (strain 427), which capture TF via its own transferrin receptor ESAG6:ESAG7 and extract its iron for its own use.

Cellular Location

Secreted.

Tissue Location

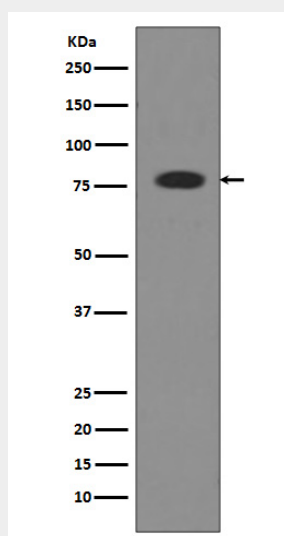
Expressed by the liver and secreted in plasma.

Anti-Transferrin TF Rabbit Monoclonal Antibody - Protocols

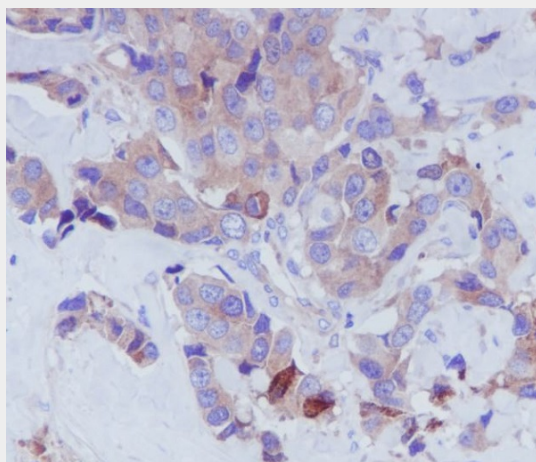
Provided below are standard protocols that you may find useful for product applications.

- [Western Blot](#)
- [Blocking Peptides](#)
- [Dot Blot](#)
- [Immunohistochemistry](#)
- [Immunofluorescence](#)
- [Immunoprecipitation](#)
- [Flow Cytometry](#)
- [Cell Culture](#)

Anti-Transferrin TF Rabbit Monoclonal Antibody - Images



Western blot analysis of Transferrin expression in Human serum lysate.



Immunohistochemical analysis of paraffin-embedded Human breast carcinoma, using Transferrin Antibody.