

**Anti-ErbB (HER3) Rabbit Monoclonal Antibody**  
Catalog # ABO14070**Specification****Anti-ErbB (HER3) Rabbit Monoclonal Antibody - Product Information**

Application	WB, IP
Primary Accession	<a href="#">P21860</a>
Host	Rabbit
Isotype	Rabbit IgG
Reactivity	Rat, Human
Clonality	Monoclonal
Format	Liquid

**Description**

Anti-ErbB (HER3) Rabbit Monoclonal Antibody . Tested in WB, IP applications. This antibody reacts with Human, Rat.

**Anti-ErbB (HER3) Rabbit Monoclonal Antibody - Additional Information**

**Gene ID** 2065

**Other Names**

Receptor tyrosine-protein kinase erbB-3, 2.7.10.1, Proto-oncogene-like protein c-ErbB-3, Tyrosine kinase-type cell surface receptor HER3, ERBB3, HER3

**Calculated MW**

148098 MW KDa

**Application Details**

WB 1:500-1:2000<br>IP 1:30

**Subcellular Localization**

Isoform 1: Cell membrane; Single-pass type I membrane protein.

**Tissue Specificity**

Epithelial tissues and brain.

**Contents**

Rabbit IgG in phosphate buffered saline, pH 7.4, 150mM NaCl, 0.02% sodium azide and 50% glycerol, 0.4-0.5mg/ml BSA.

**Immunogen**

A synthesized peptide derived from human ErbB (HER3)

**Purification**

Affinity-chromatography

Storage

**Store at -20°C for one year. For short term storage and frequent use, store at 4°C for up to one month. Avoid repeated**

freeze-thaw cycles.

## Anti-ErbB (HER3) Rabbit Monoclonal Antibody - Protein Information

**Name** ERBB3

**Synonyms** HER3

### Function

Tyrosine-protein kinase that plays an essential role as cell surface receptor for neuregulins. Binds to neuregulin-1 (NRG1) and is activated by it; ligand-binding increases phosphorylation on tyrosine residues and promotes its association with the p85 subunit of phosphatidylinositol 3-kinase (PubMed:<a href="http://www.uniprot.org/citations/20682778" target="\_blank">20682778</a>). May also be activated by CSPG5 (PubMed:<a href="http://www.uniprot.org/citations/15358134" target="\_blank">15358134</a>). Involved in the regulation of myeloid cell differentiation (PubMed:<a href="http://www.uniprot.org/citations/27416908" target="\_blank">27416908</a>).

### Cellular Location

[Isoform 1]: Cell membrane; Single-pass type I membrane protein

### Tissue Location

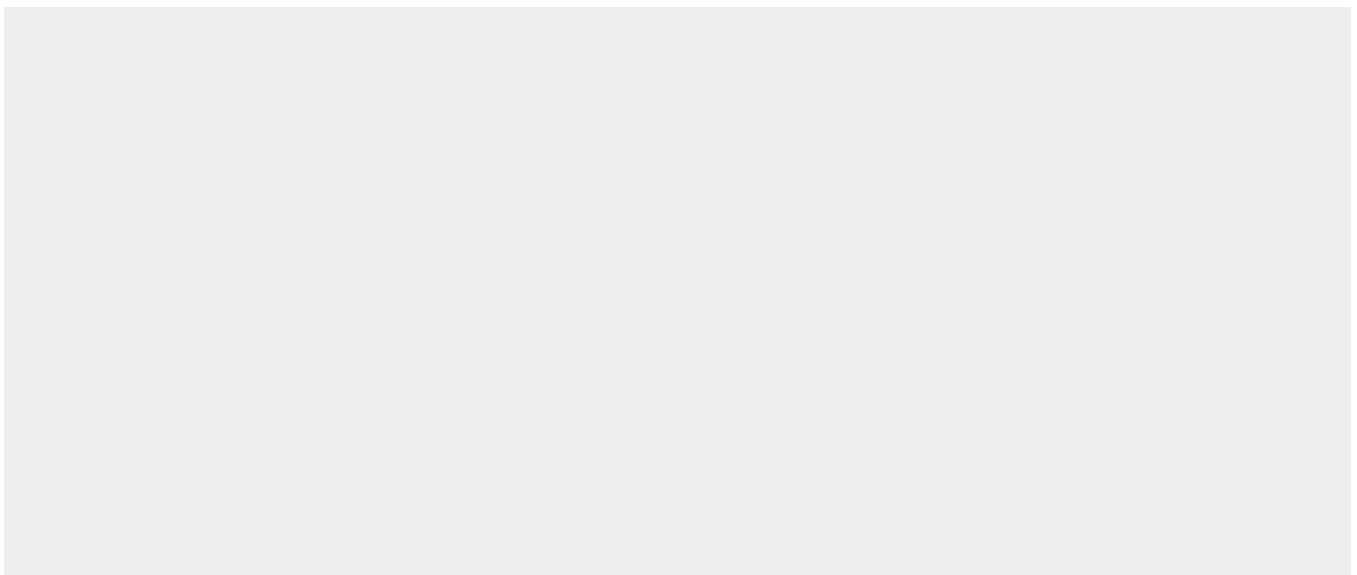
Epithelial tissues and brain.

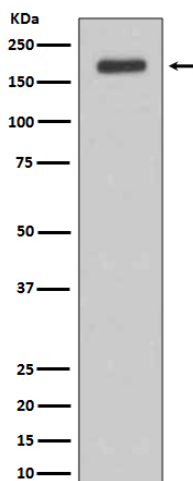
## Anti-ErbB (HER3) Rabbit Monoclonal Antibody - Protocols

Provided below are standard protocols that you may find useful for product applications.

- [Western Blot](#)
- [Blocking Peptides](#)
- [Dot Blot](#)
- [Immunohistochemistry](#)
- [Immunofluorescence](#)
- [Immunoprecipitation](#)
- [Flow Cytometry](#)
- [Cell Culture](#)

## Anti-ErbB (HER3) Rabbit Monoclonal Antibody - Images





Western blot analysis of ErbB3 (HER3) expression in MCF-7 cell lysate.