

Anti-Flotillin 1 FLOT1 Rabbit Monoclonal Antibody
Catalog # ABO14069

Specification

Anti-Flotillin 1 FLOT1 Rabbit Monoclonal Antibody - Product Information

Application	WB
Primary Accession	O75955
Host	Rabbit
Isotype	Rabbit IgG
Reactivity	Human, Mouse
Clonality	Monoclonal
Format	Liquid

Description

Anti-Flotillin 1 FLOT1 Rabbit Monoclonal Antibody . Tested in WB application. This antibody reacts with Human, Mouse.

Anti-Flotillin 1 FLOT1 Rabbit Monoclonal Antibody - Additional Information

Gene ID 10211

Other Names

Flotillin-1, FLOT1

Calculated MW

47355 MW KDa

Application Details

WB 1:500-1:2000

Subcellular Localization

Cell membrane; Peripheral membrane protein. Membrane, caveola; Peripheral membrane protein. Melanosome. Endosome. Membrane-associated protein of caveolae. Identified by mass spectrometry in melanosome fractions from stage I to stage IV.

Contents

Rabbit IgG in phosphate buffered saline, pH 7.4, 150mM NaCl, 0.02% sodium azide and 50% glycerol, 0.4-0.5mg/ml BSA.

Immunogen

A synthesized peptide derived from human Flotillin 1

Purification

Affinity-chromatography

Storage

Store at -20°C for one year. For short term storage and frequent use, store at 4°C for up to one month. Avoid repeated freeze-thaw cycles.

Anti-Flotillin 1 FLOT1 Rabbit Monoclonal Antibody - Protein Information

Name FLOT1

Function

May act as a scaffolding protein within caveolar membranes, functionally participating in formation of caveolae or caveolae-like vesicles.

Cellular Location

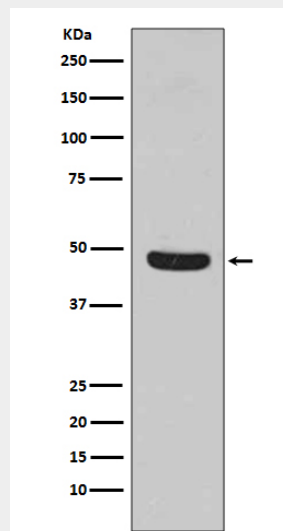
Cell membrane; Peripheral membrane protein. Endosome Membrane, caveola {ECO:0000250|UniProtKB:O08917}; Peripheral membrane protein {ECO:0000250|UniProtKB:O08917}. Melanosome. Membrane raft. Note=Identified by mass spectrometry in melanosome fractions from stage I to stage IV (PubMed:17081065) Membrane-associated protein of caveola (By similarity) {ECO:0000250|UniProtKB:O08917, ECO:0000269|PubMed:17081065}

Anti-Flotillin 1 FLOT1 Rabbit Monoclonal Antibody - Protocols

Provided below are standard protocols that you may find useful for product applications.

- [Western Blot](#)
- [Blocking Peptides](#)
- [Dot Blot](#)
- [Immunohistochemistry](#)
- [Immunofluorescence](#)
- [Immunoprecipitation](#)
- [Flow Cytometry](#)
- [Cell Culture](#)

Anti-Flotillin 1 FLOT1 Rabbit Monoclonal Antibody - Images



Western blot analysis of Flotillin 1 expression in HeLa cell lysate.