

Anti-GTPase HRAS Rabbit Monoclonal Antibody
Catalog # ABO14066

Specification

Anti-GTPase HRAS Rabbit Monoclonal Antibody - Product Information

Application	WB, IF, ICC, IP, FC
Primary Accession	P01112
Host	Rabbit
Isotype	Rabbit IgG
Reactivity	Rat, Human, Mouse
Clonality	Monoclonal
Format	Liquid

Description

Anti-GTPase HRAS Rabbit Monoclonal Antibody . Tested in WB, ICC/IF, IP, Flow Cytometry applications. This antibody reacts with Human, Mouse, Rat.

Anti-GTPase HRAS Rabbit Monoclonal Antibody - Additional Information

Gene ID 3265

Other Names

GTPase HRas, 3.6.5.2, H-Ras-1, Ha-Ras, Transforming protein p21, c-H-ras, p21ras, GTPase HRas, N-terminally processed, HRAS, HRAS1

Calculated MW

21298 MW KDa

Application Details

WB 1:500-1:2000
ICC/IF 1:50-1:200
IP 1:50
FC 1:30

Subcellular Localization

Cell membrane. Cell membrane; Lipid-anchor; Cytoplasmic side. Golgi apparatus. Golgi apparatus membrane; Lipid-anchor. The active GTP-bound form is localized most strongly to membranes than the inactive GDP-bound form (By similarity). Shuttles between the plasma membrane and the Golgi apparatus..

Tissue Specificity

Widely expressed..

Contents

Rabbit IgG in phosphate buffered saline, pH 7.4, 150mM NaCl, 0.02% sodium azide and 50% glycerol, 0.4-0.5mg/ml BSA.

Immunogen

A synthesized peptide derived from human GTPase HRAS

Purification

Affinity-chromatography

Storage

Store at -20°C for one year. For short term storage and frequent use, store at 4°C for up to one month. Avoid repeated freeze-thaw cycles.

Anti-GTPase HRAS Rabbit Monoclonal Antibody - Protein Information**Name** HRAS**Synonyms** HRAS1**Function**

Involved in the activation of Ras protein signal transduction (PubMed:22821884). Ras proteins bind GDP/GTP and possess intrinsic GTPase activity (PubMed:12740440, PubMed:14500341, PubMed:9020151).

Cellular Location

Cell membrane {ECO:0000250|UniProtKB:P20171}; Lipid-anchor; Cytoplasmic side. Golgi apparatus. Golgi apparatus membrane; Lipid-anchor. Note=The active GTP-bound form is localized most strongly to membranes than the inactive GDP-bound form (By similarity). Shuttles between the plasma membrane and the Golgi apparatus.

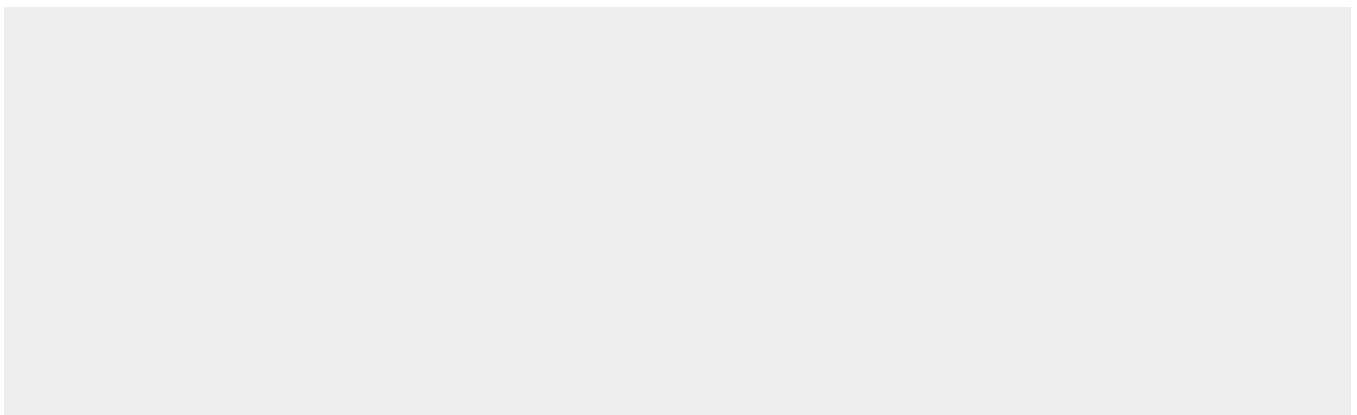
Tissue Location

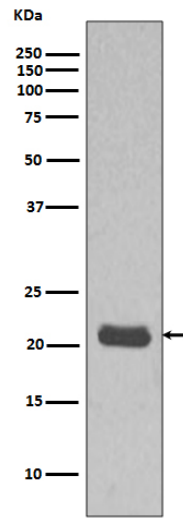
Widely expressed..

Anti-GTPase HRAS Rabbit Monoclonal Antibody - Protocols

Provided below are standard protocols that you may find useful for product applications.

- [Western Blot](#)
- [Blocking Peptides](#)
- [Dot Blot](#)
- [Immunohistochemistry](#)
- [Immunofluorescence](#)
- [Immunoprecipitation](#)
- [Flow Cytometry](#)
- [Cell Culture](#)

Anti-GTPase HRAS Rabbit Monoclonal Antibody - Images



Western blot analysis MCF7 cell lysate using HRAS Antibody.