

Anti-HIF-2 alpha EPAS1 Rabbit Monoclonal Antibody
Catalog # ABO14062**Specification****Anti-HIF-2 alpha EPAS1 Rabbit Monoclonal Antibody - Product Information**

Application	WB, IF, ICC, FC
Primary Accession	Q99814
Host	Rabbit
Isotype	Rabbit IgG
Reactivity	Rat, Human, Mouse
Clonality	Monoclonal
Format	Liquid

Description

Anti-HIF-2 alpha EPAS1 Rabbit Monoclonal Antibody . Tested in WB, ICC/IF, Flow Cytometry applications. This antibody reacts with Human, Mouse, Rat.

Anti-HIF-2 alpha EPAS1 Rabbit Monoclonal Antibody - Additional Information

Gene ID 2034

Other Names

Endothelial PAS domain-containing protein 1, EPAS-1, Basic-helix-loop-helix-PAS protein MOP2, Class E basic helix-loop-helix protein 73, bHLHe73, HIF-1-alpha-like factor, HLF, Hypoxia-inducible factor 2-alpha, HIF-2-alpha, HIF2-alpha, Member of PAS protein 2, PAS domain-containing protein 2, EPAS1, BHLHE73, HIF2A, MOP2, PASD2

Calculated MW

96459 MW KDa

Application Details

WB 1:500-1:2000
ICC/IF 1:50-1:200
FC 1:50

Subcellular Localization

Nucleus. Nucleus speckle. Colocalizes with HIF3A in the nucleus and speckles..

Tissue Specificity

Expressed in most tissues, with highest levels in placenta, lung and heart. Selectively expressed in endothelial cells.

Contents

Rabbit IgG in phosphate buffered saline, pH 7.4, 150 mM NaCl, 0.02% sodium azide and 50% glycerol, 0.4-0.5 mg/ml BSA.

Immunogen

A synthesized peptide derived from human HIF-2 alpha

Purification

Affinity-chromatography

Storage

Store at -20°C for one year. For short term storage and frequent use, store at 4°C for up to one month. Avoid repeated freeze-thaw cycles.

Anti-HIF-2 alpha EPAS1 Rabbit Monoclonal Antibody - Protein Information

Name EPAS1

Synonyms BHLHE73, HIF2A, MOP2, PASD2

Function

Transcription factor involved in the induction of oxygen regulated genes. Heterodimerizes with ARNT; heterodimer binds to core DNA sequence 5'-TACGTG-3' within the hypoxia response element (HRE) of target gene promoters (By similarity). Regulates the vascular endothelial growth factor (VEGF) expression and seems to be implicated in the development of blood vessels and the tubular system of lung. May also play a role in the formation of the endothelium that gives rise to the blood brain barrier. Potent activator of the Tie-2 tyrosine kinase expression. Activation requires recruitment of transcriptional coactivators such as CREBBP and probably EP300. Interaction with redox regulatory protein APEX1 seems to activate CTAD (By similarity).

Cellular Location

Nucleus {ECO:0000250|UniProtKB:P97481, ECO:0000255|PROSITE-ProRule:PRU00981}. Nucleus speckle {ECO:0000250|UniProtKB:P97481}. Note=Colocalizes with HIF3A in the nucleus and speckles. {ECO:0000250|UniProtKB:P97481}

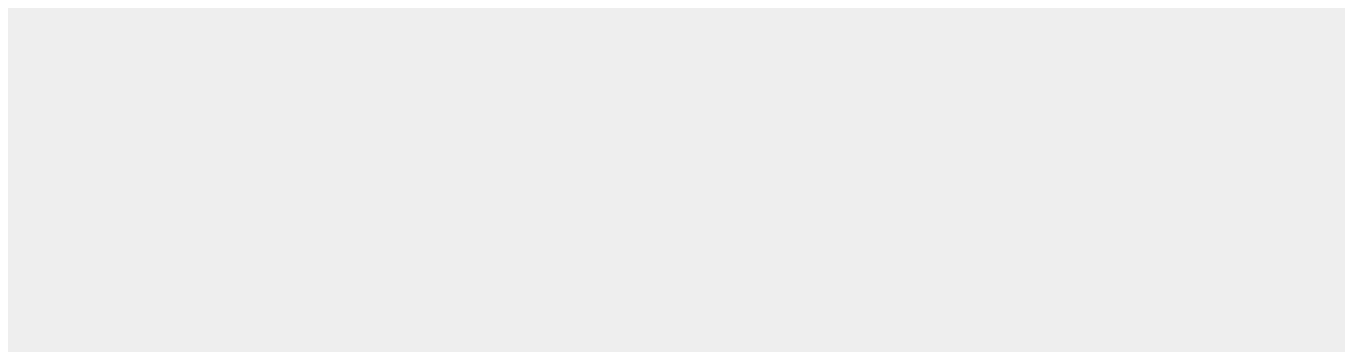
Tissue Location

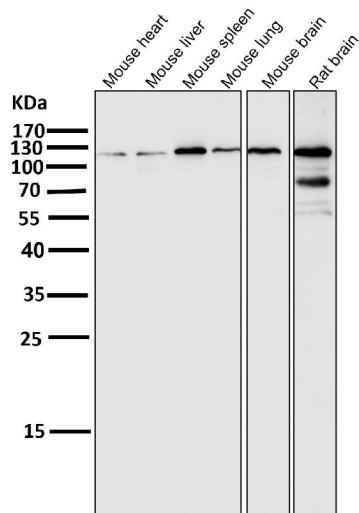
Expressed in most tissues, with highest levels in placenta, lung and heart. Selectively expressed in endothelial cells

Anti-HIF-2 alpha EPAS1 Rabbit Monoclonal Antibody - Protocols

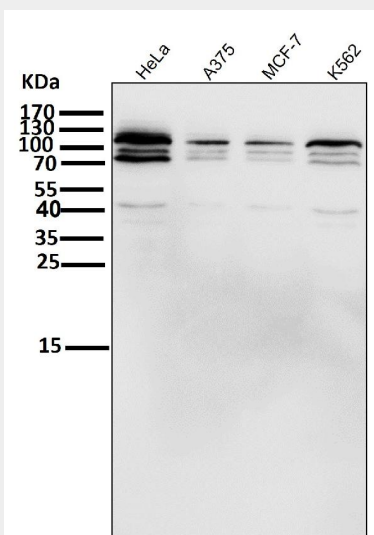
Provided below are standard protocols that you may find useful for product applications.

- [Western Blot](#)
- [Blocking Peptides](#)
- [Dot Blot](#)
- [Immunohistochemistry](#)
- [Immunofluorescence](#)
- [Immunoprecipitation](#)
- [Flow Cytometry](#)
- [Cell Culture](#)

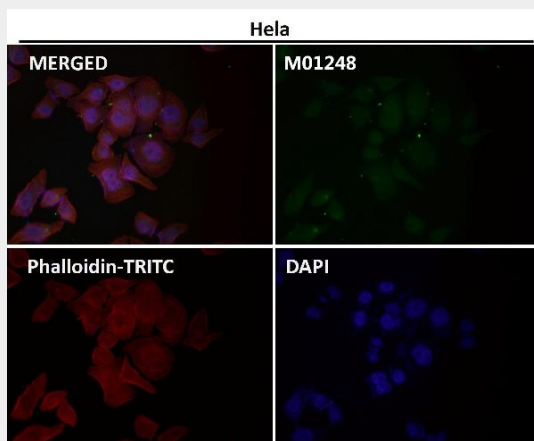
Anti-HIF-2 alpha EPAS1 Rabbit Monoclonal Antibody - Images



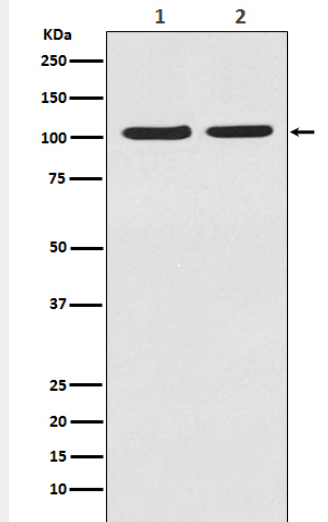
All lanes use the Antibody at 1:1K dilution for 1 hour at room temperature.



All lanes use the Antibody at 1:1K dilution for 1 hour at room temperature.



Immunofluorescent analysis using the Antibody at 1:50 dilution.



Western blot analysis of HIF-2 alpha in (1)MCF-7 cell lysate;(2)HeLa cell lysate.