

**Anti-Flotillin 2 FLOT2 Rabbit Monoclonal Antibody**  
**Catalog # ABO14059****Specification**

---

**Anti-Flotillin 2 FLOT2 Rabbit Monoclonal Antibody - Product Information**

|                   |                        |
|-------------------|------------------------|
| Application       | WB, IP                 |
| Primary Accession | <a href="#">Q14254</a> |
| Host              | Rabbit                 |
| Isotype           | Rabbit IgG             |
| Reactivity        | Rat, Human, Mouse      |
| Clonality         | Monoclonal             |
| Format            | Liquid                 |

**Description**

Anti-Flotillin 2 FLOT2 Rabbit Monoclonal Antibody . Tested in WB, IP applications. This antibody reacts with Human, Mouse, Rat.

**Anti-Flotillin 2 FLOT2 Rabbit Monoclonal Antibody - Additional Information**

**Gene ID** 2319

**Other Names**

Flotillin-2, Epidermal surface antigen, ESA, Membrane component chromosome 17 surface marker 1, FLOT2, ESA1, M17S1

**Calculated MW**

47064 MW KDa

**Application Details**

WB 1:500-1:2000<br>IP 1:30

**Subcellular Localization**

Cell membrane ; Peripheral membrane protein. Membrane, caveola ; Peripheral membrane protein. Endosome. Membrane-associated protein of caveolae.

**Tissue Specificity**

In skin, expressed in epidermis and epidermal appendages but not in dermis. Expressed in all layers of the epidermis except the basal layer. In hair follicles, expressed in the suprabasal layer but not the basal layer. Also expressed in melanoma and carcinoma cell lines, fibroblasts and foreskin melanocytes.

**Contents**

Rabbit IgG in phosphate buffered saline, pH 7.4, 150mM NaCl, 0.02% sodium azide and 50% glycerol, 0.4-0.5mg/ml BSA.

**Immunogen**

A synthesized peptide derived from human Flotillin 2

**Purification**

Affinity-chromatography

**Storage**

**Store at -20°C for one year. For short term storage and frequent use, store at 4°C for up to one month. Avoid repeated freeze-thaw cycles.**

**Anti-Flotillin 2 FLOT2 Rabbit Monoclonal Antibody - Protein Information**

**Name** FLOT2

**Synonyms** ESA1, M17S1

**Function**

May act as a scaffolding protein within caveolar membranes, functionally participating in formation of caveolae or caveolae-like vesicles. May be involved in epidermal cell adhesion and epidermal structure and function.

**Cellular Location**

Cell membrane; Peripheral membrane protein. Membrane, caveola; Peripheral membrane protein. Endosome Membrane; Lipid-anchor. Note=Membrane- associated protein of caveolae

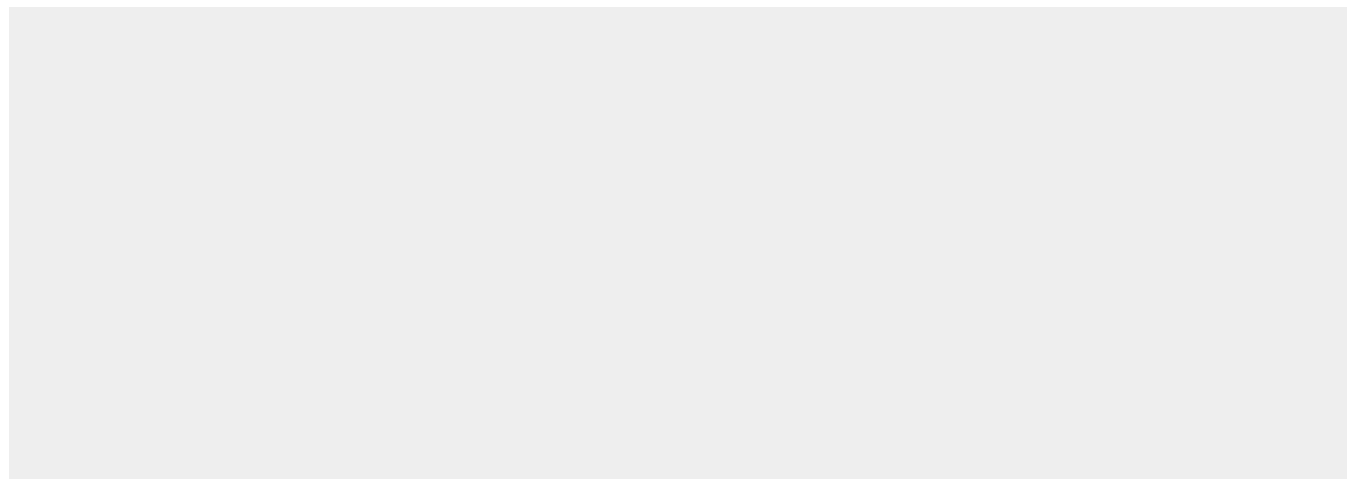
**Tissue Location**

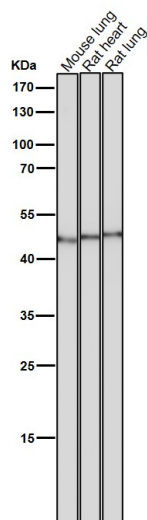
In skin, expressed in epidermis and epidermal appendages but not in dermis. Expressed in all layers of the epidermis except the basal layer. In hair follicles, expressed in the suprabasal layer but not the basal layer. Also expressed in melanoma and carcinoma cell lines, fibroblasts and foreskin melanocytes

**Anti-Flotillin 2 FLOT2 Rabbit Monoclonal Antibody - Protocols**

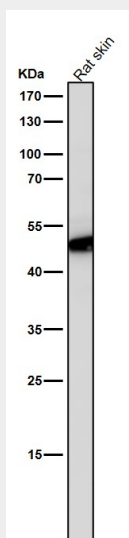
Provided below are standard protocols that you may find useful for product applications.

- [Western Blot](#)
- [Blocking Peptides](#)
- [Dot Blot](#)
- [Immunohistochemistry](#)
- [Immunofluorescence](#)
- [Immunoprecipitation](#)
- [Flow Cytometry](#)
- [Cell Culture](#)

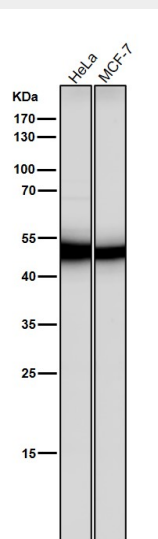
**Anti-Flotillin 2 FLOT2 Rabbit Monoclonal Antibody - Images**



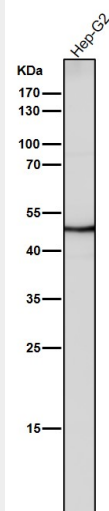
All lanes use the Antibody at 1:3K dilution for 1 hour at room temperature.



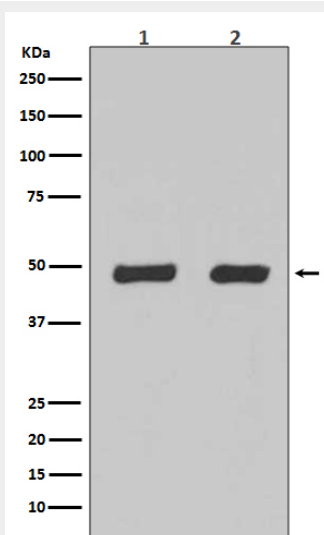
All lanes use the Antibody at 1:3K dilution for 1 hour at room temperature.



All lanes use the Antibody at 1:3K dilution for 1 hour at room temperature.



All lanes use the Antibody at 1:3K dilution for 1 hour at room temperature.



Western blot analysis of Flotillin-2 expression in (1) HeLa cell lysate;(2) 293 cell lysate.