

Anti-PKA 2 beta PRKAR2B Rabbit Monoclonal Antibody
Catalog # ABO14056

Specification

Anti-PKA 2 beta PRKAR2B Rabbit Monoclonal Antibody - Product Information

Application	WB, IHC, IF, ICC, IP, FC
Primary Accession	P31323
Host	Rabbit
Isotype	Rabbit IgG
Reactivity	Rat, Human, Mouse
Clonality	Monoclonal
Format	Liquid

Description

Anti-PKA 2 beta PRKAR2B Rabbit Monoclonal Antibody . Tested in WB, IHC, ICC/IF, IP, Flow Cytometry applications. This antibody reacts with Human, Mouse, Rat.

Anti-PKA 2 beta PRKAR2B Rabbit Monoclonal Antibody - Additional Information

Gene ID 5577

Other Names

cAMP-dependent protein kinase type II-beta regulatory subunit, PRKAR2B

Calculated MW

46302 MW KDa

Application Details

WB 1:1000-1:5000
IHC 1:50-1:200
ICC/IF 1:50-1:200
IP 1:50
FC 1:50

Subcellular Localization

Cytoplasm. Cell membrane. Colocalizes with PJA2 in the cytoplasm and at the cell membrane.

Tissue Specificity

Four types of regulatory chains are found: I- alpha, I-beta, II-alpha, and II-beta. Their expression varies among tissues and is in some cases constitutive and in others inducible.

Contents

Rabbit IgG in phosphate buffered saline, pH 7.4, 150mM NaCl, 0.02% sodium azide and 50% glycerol, 0.4-0.5mg/ml BSA.

Immunogen

A synthesized peptide derived from human PKA 2 beta

Purification

Affinity-chromatography

Storage

Store at -20°C for one year. For short term storage and frequent use, store at 4°C for up to one month. Avoid repeated

freeze-thaw cycles.

Anti-PKA 2 beta PRKAR2B Rabbit Monoclonal Antibody - Protein Information

Name PRKAR2B

Function

Regulatory subunit of the cAMP-dependent protein kinases involved in cAMP signaling in cells. Type II regulatory chains mediate membrane association by binding to anchoring proteins, including the MAP2 kinase.

Cellular Location

Cytoplasm. Cell membrane. Note=Colocalizes with PJA2 in the cytoplasm and at the cell membrane

Tissue Location

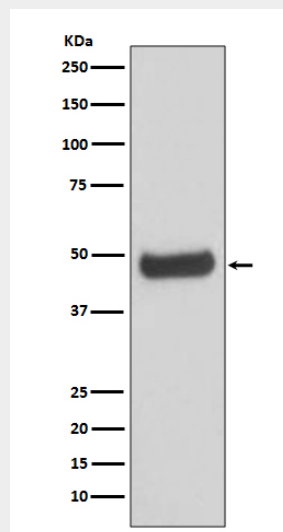
Four types of regulatory chains are found: I-alpha, I-beta, II-alpha, and II-beta. Their expression varies among tissues and is in some cases constitutive and in others inducible

Anti-PKA 2 beta PRKAR2B Rabbit Monoclonal Antibody - Protocols

Provided below are standard protocols that you may find useful for product applications.

- [Western Blot](#)
- [Blocking Peptides](#)
- [Dot Blot](#)
- [Immunohistochemistry](#)
- [Immunofluorescence](#)
- [Immunoprecipitation](#)
- [Flow Cytometry](#)
- [Cell Culture](#)

Anti-PKA 2 beta PRKAR2B Rabbit Monoclonal Antibody - Images



Western blot analysis of PKA 2 beta expression in human fetal brain lysate.