

**Anti-Tyrosinase Rabbit Monoclonal Antibody**  
**Catalog # ABO14055****Specification**

---

**Anti-Tyrosinase Rabbit Monoclonal Antibody - Product Information**

Application	WB, IHC, IF, ICC
Primary Accession	<a href="#">P14679</a>
Host	Rabbit
Isotype	Rabbit IgG
Reactivity	Human
Clonality	Monoclonal
Format	Liquid

**Description**

Anti-Tyrosinase Rabbit Monoclonal Antibody . Tested in WB, IHC, ICC/IF applications. This antibody reacts with Human.

**Anti-Tyrosinase Rabbit Monoclonal Antibody - Additional Information**

**Gene ID** 7299

**Other Names**

Tyrosinase, 1.14.18.1, LB24-AB, Monophenol monooxygenase, SK29-AB, Tumor rejection antigen AB, TYR ([http://www.genenames.org/cgi-bin/gene\\_symbol\\_report?hgnc\\_id=12442](http://www.genenames.org/cgi-bin/gene_symbol_report?hgnc_id=12442))  
HGNC:12442

**Calculated MW**

60393 MW KDa

**Application Details**

WB 1:500-1:2000<br>IHC 1:50-1:200<br>ICC/IF 1:50-1:200

**Subcellular Localization**

Melanosome membrane ; Single-pass type I membrane protein.

**Contents**

Rabbit IgG in phosphate buffered saline, pH 7.4, 150mM NaCl, 0.02% sodium azide and 50% glycerol, 0.4-0.5mg/ml BSA.

**Immunogen**

A synthesized peptide derived from human Tyrosinase

**Purification**

Affinity-chromatography

**Storage**

**Store at -20°C for one year. For short term storage and frequent use, store at 4°C for up to one month. Avoid repeated freeze-thaw cycles.**

## Anti-Tyrosinase Rabbit Monoclonal Antibody - Protein Information

**Name** TYR ([HGNC:12442](#))

### Function

This is a copper-containing oxidase that functions in the formation of pigments such as melanins and other polyphenolic compounds. Catalyzes the initial and rate limiting step in the cascade of reactions leading to melanin production from tyrosine (By similarity). In addition to hydroxylating tyrosine to DOPA (3,4- dihydroxyphenylalanine), also catalyzes the oxidation of DOPA to DOPA-quinone, and possibly the oxidation of DHI (5,6-dihydroxyindole) to indole-5,6 quinone (PubMed:<a href="http://www.uniprot.org/citations/28661582" target="\_blank">28661582</a>).

### Cellular Location

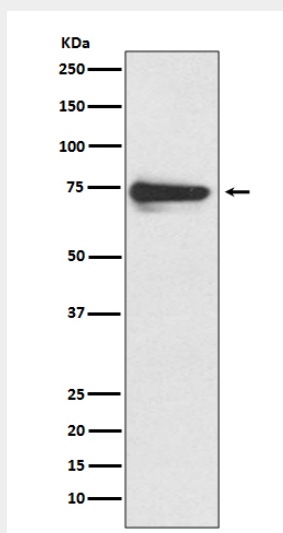
Melanosome membrane; Single-pass type I membrane protein. Melanosome {ECO:0000250|UniProtKB:P11344}. Note=Proper trafficking to melanosome is regulated by SGSM2, ANKRD27, RAB9A, RAB32 and RAB38 {ECO:0000250|UniProtKB:P11344}

## Anti-Tyrosinase Rabbit Monoclonal Antibody - Protocols

Provided below are standard protocols that you may find useful for product applications.

- [Western Blot](#)
- [Blocking Peptides](#)
- [Dot Blot](#)
- [Immunohistochemistry](#)
- [Immunofluorescence](#)
- [Immunoprecipitation](#)
- [Flow Cytometry](#)
- [Cell Culture](#)

## Anti-Tyrosinase Rabbit Monoclonal Antibody - Images



Western blot analysis of Tyrosinase expression in human melanoma lysate.