

Anti-Syndecan 1 SDC1 Rabbit Monoclonal Antibody
Catalog # ABO14053**Specification****Anti-Syndecan 1 SDC1 Rabbit Monoclonal Antibody - Product Information**

Application	WB, IHC, IF, ICC
Primary Accession	P18827
Host	Rabbit
Isotype	Rabbit IgG
Reactivity	Rat, Human, Mouse
Clonality	Monoclonal
Format	Liquid

Description

Anti-Syndecan 1 SDC1 Rabbit Monoclonal Antibody . Tested in WB, IHC, ICC/IF applications. This antibody reacts with Human, Mouse, Rat.

Anti-Syndecan 1 SDC1 Rabbit Monoclonal Antibody - Additional Information

Gene ID 6382

Other Names

Syndecan-1 {ECO:0000312|HGNC:HGNC:10658}, SYND1 {ECO:0000312|HGNC:HGNC:10658}, CD138, SDC1 (http://www.genenames.org/cgi-bin/gene_symbol_report?hgnc_id=10658), SDC

Calculated MW

32462 MW KDa

Application Details

WB 1:500-1:2000
IHC 1:100-1:500
ICC/IF 1:50-1:200

Subcellular Localization

Membrane; Single-pass type I membrane protein. Secreted. Shedding of the ectodomain produces a soluble form.

Contents

Rabbit IgG in phosphate buffered saline, pH 7.4, 150mM NaCl, 0.02% sodium azide and 50% glycerol, 0.4-0.5mg/ml BSA.

Immunogen

A synthesized peptide derived from human Syndecan 1

Purification

Affinity-chromatography

Storage

Store at -20°C for one year. For short term storage and frequent use, store at 4°C for up to one month. Avoid repeated freeze-thaw cycles.

Anti-Syndecan 1 SDC1 Rabbit Monoclonal Antibody - Protein Information

Name SDC1 ([HGNC:10658](#))

Synonyms SDC

Function

Cell surface proteoglycan that contains both heparan sulfate and chondroitin sulfate and that links the cytoskeleton to the interstitial matrix (By similarity). Regulates exosome biogenesis in concert with SDCBP and PDCD6IP (PubMed:22660413). Able to induce its own expression in dental mesenchymal cells and also in the neighboring dental epithelial cells via an MSX1-mediated pathway (By similarity).

Cellular Location

Membrane; Single-pass type I membrane protein. Secreted Secreted, extracellular exosome
Note=Shedding of the ectodomain produces a soluble form

Tissue Location

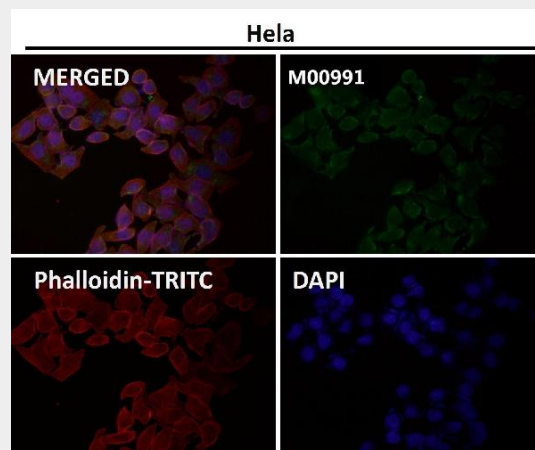
Detected in placenta (at protein level) (PubMed:32337544). Detected in fibroblasts (at protein level) (PubMed:36213313).

Anti-Syndecan 1 SDC1 Rabbit Monoclonal Antibody - Protocols

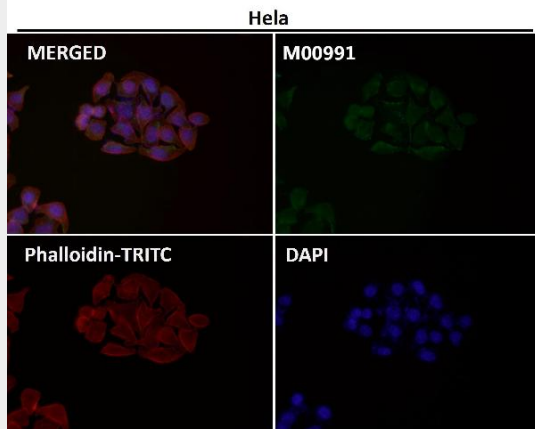
Provided below are standard protocols that you may find useful for product applications.

- [Western Blot](#)
- [Blocking Peptides](#)
- [Dot Blot](#)
- [Immunohistochemistry](#)
- [Immunofluorescence](#)
- [Immunoprecipitation](#)
- [Flow Cytometry](#)
- [Cell Culture](#)

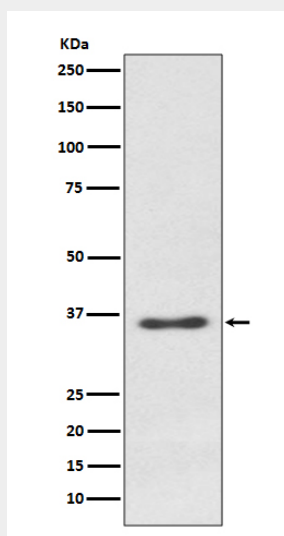
Anti-Syndecan 1 SDC1 Rabbit Monoclonal Antibody - Images



Immunofluorescent analysis using the Antibody at 1:50 dilution.



Immunofluorescent analysis using the Antibody at 1:150 dilution.



Western blot analysis of Syndecan 1 expression in Ramos cell lysate.