

Anti-Mitofusin1 MFN1 Rabbit Monoclonal Antibody
Catalog # ABO14045**Specification****Anti-Mitofusin1 MFN1 Rabbit Monoclonal Antibody - Product Information**

Application	WB, IP, FC
Primary Accession	Q8IWA4
Host	Rabbit
Isotype	Rabbit IgG
Reactivity	Human
Clonality	Monoclonal
Format	Liquid

Description

Anti-Mitofusin1 MFN1 Rabbit Monoclonal Antibody . Tested in WB, IP, Flow Cytometry applications. This antibody reacts with Human.

Anti-Mitofusin1 MFN1 Rabbit Monoclonal Antibody - Additional Information

Gene ID 55669

Other Names

Mitofusin-1, 3.6.5.-, Fzo homolog, Transmembrane GTPase MFN1, MFN1

Calculated MW

84100 MW KDa

Application Details

WB 1:1000-1:5000
IP 1:20
FC 1:20

Subcellular Localization

Mitochondrion outer membrane ; Multi- pass membrane protein.

Tissue Specificity

Ubiquitous. Expressed at slightly higher level in kidney and heart. Isoform 2 may be overexpressed in some tumors, such as lung cancers..

Contents

Rabbit IgG in phosphate buffered saline, pH 7.4, 150mM NaCl, 0.02% sodium azide and 50% glycerol, 0.4-0.5mg/ml BSA.

Immunogen

A synthesized peptide derived from human Mitofusin1

Purification

Affinity-chromatography

Storage

Store at -20°C for one year. For short term storage and frequent use, store at 4°C for up to one month. Avoid repeated

freeze-thaw cycles.

Anti-Mitofusin1 MFN1 Rabbit Monoclonal Antibody - Protein Information

Name MFN1

Function

Mitochondrial outer membrane GTPase that mediates mitochondrial clustering and fusion (PubMed:12475957, PubMed:12759376, PubMed:27920125, PubMed:28114303). Membrane clustering requires GTPase activity (PubMed:27920125). It may involve a major rearrangement of the coiled coil domains (PubMed:27920125, PubMed:28114303). Mitochondria are highly dynamic organelles, and their morphology is determined by the equilibrium between mitochondrial fusion and fission events (PubMed:12475957, PubMed:12759376). Overexpression induces the formation of mitochondrial networks (in vitro) (PubMed:12759376). Has low GTPase activity (PubMed:27920125, PubMed:28114303).

Cellular Location

Mitochondrion outer membrane; Multi-pass membrane protein

Tissue Location

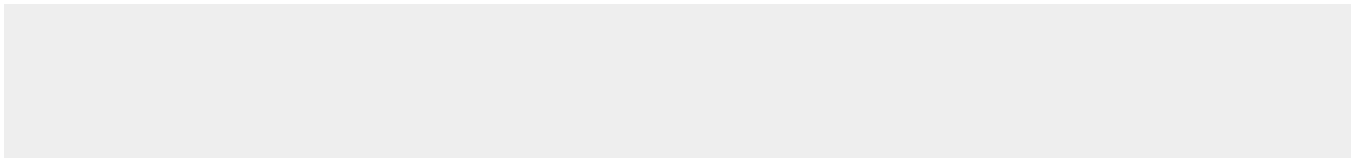
Detected in kidney and heart (at protein level) (PubMed:12759376). Ubiquitous (PubMed:11950885, PubMed:12759376) Expressed at slightly higher level in kidney and heart (PubMed:12759376). Isoform 2 may be overexpressed in some tumors, such as lung cancers (PubMed:11751411).

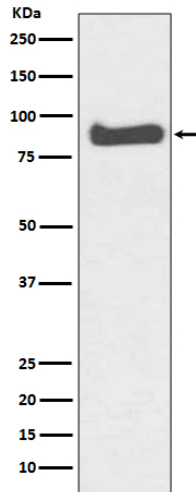
Anti-Mitofusin1 MFN1 Rabbit Monoclonal Antibody - Protocols

Provided below are standard protocols that you may find useful for product applications.

- [Western Blot](#)
- [Blocking Peptides](#)
- [Dot Blot](#)
- [Immunohistochemistry](#)
- [Immunofluorescence](#)
- [Immunoprecipitation](#)
- [Flow Cytometry](#)
- [Cell Culture](#)

Anti-Mitofusin1 MFN1 Rabbit Monoclonal Antibody - Images





Western blot analysis of Mitofusin1 expression in K562 cell lysate.