

Anti-Caspase-10 Rabbit Monoclonal Antibody Catalog # ABO14041

Specification

Anti-Caspase-10 Rabbit Monoclonal Antibody - Product Information

Application	WB, IHC, IP, FC
Primary Accession	Q92851
Host	Rabbit
Isotype	Rabbit IgG
Reactivity	Human
Clonality	Monoclonal
Format	Liquid

Description

Anti-Caspase-10 Rabbit Monoclonal Antibody . Tested in WB, IHC, IP, Flow Cytometry applications. This antibody reacts with Human.

Anti-Caspase-10 Rabbit Monoclonal Antibody - Additional Information

Gene ID 843

Other Names

Caspase-10, CASP-10, 3.4.22.63, Apoptotic protease Mch-4, FAS-associated death domain protein interleukin-1B-converting enzyme 2, FLICE2, ICE-like apoptotic protease 4, Caspase-10 subunit p23/17, Caspase-10 subunit p12, CASP10, MCH4

Calculated MW

58951 MW KDa

Application Details

WB 1:500-1:2000
IHC 1:50-1:100
IP 1:50
FC 1:50

Tissue Specificity

Detectable in most tissues. Lowest expression is seen in brain, kidney, prostate, testis and colon.

Contents

Rabbit IgG in phosphate buffered saline, pH 7.4, 150mM NaCl, 0.02% sodium azide and 50% glycerol, 0.4-0.5mg/ml BSA.

Immunogen

A synthesized peptide derived from human Caspase-10

Purification

Affinity-chromatography

Storage

Store at -20°C for one year. For short term storage and frequent use, store at 4°C for up to one month. Avoid repeated freeze-thaw cycles.

Anti-Caspase-10 Rabbit Monoclonal Antibody - Protein Information

Name CASP10

Synonyms MCH4

Function

Involved in the activation cascade of caspases responsible for apoptosis execution. Recruited to both Fas- and TNFR-1 receptors in a FADD dependent manner. May participate in the granzyme B apoptotic pathways. Cleaves and activates effector caspases CASP3, CASP4, CASP6, CASP7, CASP8 and CASP9. Hydrolyzes the small- molecule substrates, Tyr- Val-Ala-Asp-|-AMC and Asp-Glu-Val-Asp-|-AMC.

Tissue Location

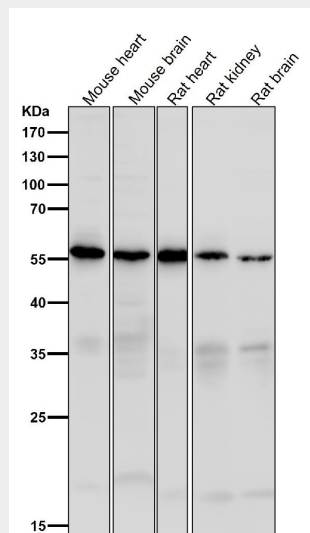
Detectable in most tissues. Lowest expression is seen in brain, kidney, prostate, testis and colon

Anti-Caspase-10 Rabbit Monoclonal Antibody - Protocols

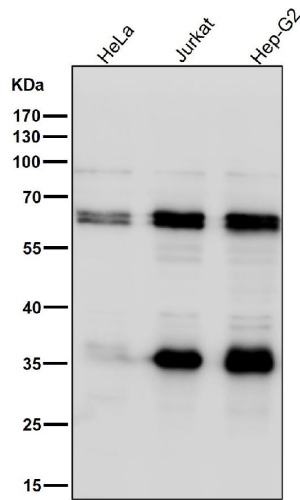
Provided below are standard protocols that you may find useful for product applications.

- [Western Blot](#)
- [Blocking Peptides](#)
- [Dot Blot](#)
- [Immunohistochemistry](#)
- [Immunofluorescence](#)
- [Immunoprecipitation](#)
- [Flow Cytometry](#)
- [Cell Culture](#)

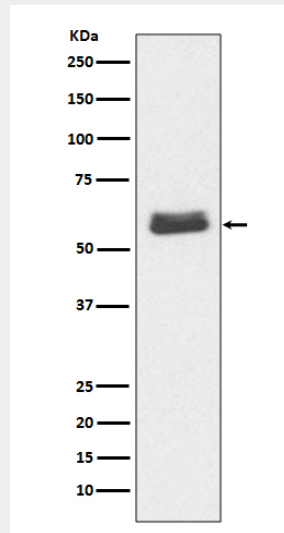
Anti-Caspase-10 Rabbit Monoclonal Antibody - Images



All lanes use the Antibody at 1:1K dilution for 1 hour at room temperature.



All lanes use the Antibody at 1:1K dilution for 1 hour at room temperature.



Western blot analysis of Caspase-10 expression in Jurkat cell lysate.