

Anti-Cdc23/APC8 Rabbit Monoclonal Antibody Catalog # ABO14040

Specification

Anti-Cdc23/APC8 Rabbit Monoclonal Antibody - Product Information

Application	WB, IF, ICC
Primary Accession	O9UJX2
Host	Rabbit
Isotype	Rabbit IgG
Reactivity	Rat, Human, Mouse
Clonality	Monoclonal
Format	Liquid

Description

Anti-Cdc23/APC8 Rabbit Monoclonal Antibody . Tested in WB, ICC/IF applications. This antibody reacts with Human, Mouse, Rat.

Anti-Cdc23/APC8 Rabbit Monoclonal Antibody - Additional Information

Gene ID 8697

Other Names

Cell division cycle protein 23 homolog, Anaphase-promoting complex subunit 8, APC8, Cyclosome subunit 8, CDC23, ANAPC8

Calculated MW

68834 MW KDa

Application Details

WB 1:500-1:2000
ICC/IF 1:50-1:100

Contents

Rabbit IgG in phosphate buffered saline, pH 7.4, 150mM NaCl, 0.02% sodium azide and 50% glycerol, 0.4-0.5mg/ml BSA.

Immunogen

A synthesized peptide derived from human Cdc23/APC8

Purification

Affinity-chromatography

Storage

Store at -20°C for one year. For short term storage and frequent use, store at 4°C for up to one month. Avoid repeated freeze-thaw cycles.

Anti-Cdc23/APC8 Rabbit Monoclonal Antibody - Protein Information

Name CDC23

Synonyms ANAPC8

Function

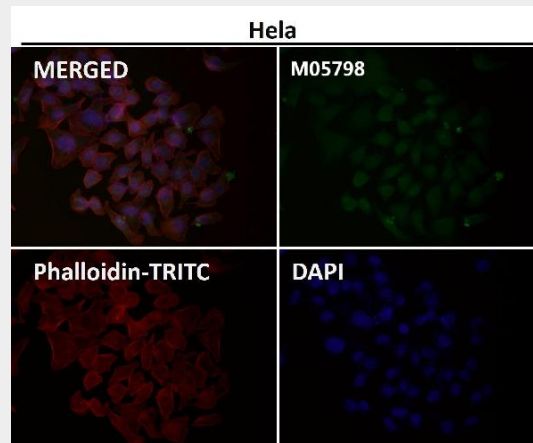
Component of the anaphase promoting complex/cyclosome (APC/C), a cell cycle-regulated E3 ubiquitin ligase that controls progression through mitosis and the G1 phase of the cell cycle (PubMed:18485873). The APC/C complex acts by mediating ubiquitination and subsequent degradation of target proteins: it mainly mediates the formation of 'Lys-11'-linked polyubiquitin chains and, to a lower extent, the formation of 'Lys-48'- and 'Lys-63'-linked polyubiquitin chains (PubMed:18485873). The APC/C complex catalyzes assembly of branched 'Lys-11'-/'Lys-48'-linked branched ubiquitin chains on target proteins (PubMed:29033132).

Anti-Cdc23/APC8 Rabbit Monoclonal Antibody - Protocols

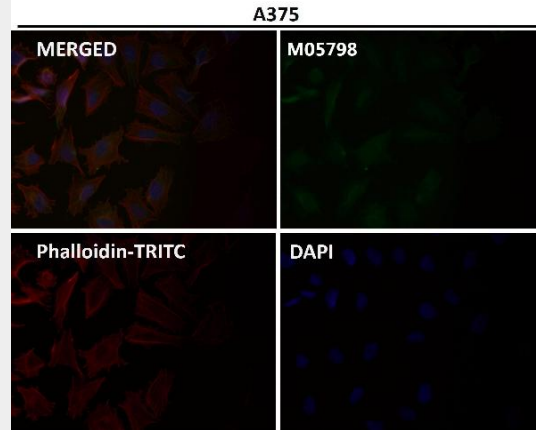
Provided below are standard protocols that you may find useful for product applications.

- [Western Blot](#)
- [Blocking Peptides](#)
- [Dot Blot](#)
- [Immunohistochemistry](#)
- [Immunofluorescence](#)
- [Immunoprecipitation](#)
- [Flow Cytometry](#)
- [Cell Culture](#)

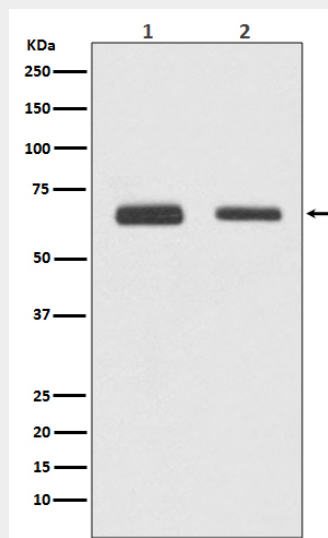
Anti-Cdc23/APC8 Rabbit Monoclonal Antibody - Images



Immunofluorescent analysis using the Antibody at 1:50 dilution.



Immunofluorescent analysis using the Antibody at 1:50 dilution.



Western blot analysis of Cdc23/APC8 expression in (1)HepG2 cell lysate; (2)Jurkat cell lysate.