

Anti-Cdc27/APC3 Rabbit Monoclonal Antibody
Catalog # ABO14038

Specification

Anti-Cdc27/APC3 Rabbit Monoclonal Antibody - Product Information

Application	WB
Primary Accession	P30260
Host	Rabbit
Isotype	Rabbit IgG
Reactivity	Rat, Human, Mouse
Clonality	Monoclonal
Format	Liquid

Description

Anti-Cdc27/APC3 Rabbit Monoclonal Antibody . Tested in WB application. This antibody reacts with Human, Mouse, Rat.

Anti-Cdc27/APC3 Rabbit Monoclonal Antibody - Additional Information

Gene ID 996

Other Names

Cell division cycle protein 27 homolog, Anaphase-promoting complex subunit 3, APC3, CDC27 homolog, CDC27Hs, H-NUC, CDC27, ANAPC3, D0S1430E, D17S978E

Calculated MW

91867 MW KDa

Application Details

WB 1:500-1:2000

Subcellular Localization

Nucleus.

Contents

Rabbit IgG in phosphate buffered saline, pH 7.4, 150mM NaCl, 0.02% sodium azide and 50% glycerol, 0.4-0.5mg/ml BSA.

Immunogen

A synthesized peptide derived from human Cdc27/APC3

Purification

Affinity-chromatography

Storage

Store at -20°C for one year. For short term storage and frequent use, store at 4°C for up to one month. Avoid repeated freeze-thaw cycles.

Anti-Cdc27/APC3 Rabbit Monoclonal Antibody - Protein Information

Name CDC27

Synonyms ANAPC3, DOS1430E, D17S978E

Function

Component of the anaphase promoting complex/cyclosome (APC/C), a cell cycle-regulated E3 ubiquitin ligase that controls progression through mitosis and the G1 phase of the cell cycle (PubMed:18485873). The APC/C complex acts by mediating ubiquitination and subsequent degradation of target proteins: it mainly mediates the formation of 'Lys-11'-linked polyubiquitin chains and, to a lower extent, the formation of 'Lys-48'- and 'Lys-63'-linked polyubiquitin chains (PubMed:18485873). The APC/C complex catalyzes assembly of branched 'Lys-11'-/'Lys-48'-linked branched ubiquitin chains on target proteins (PubMed:29033132).

Cellular Location

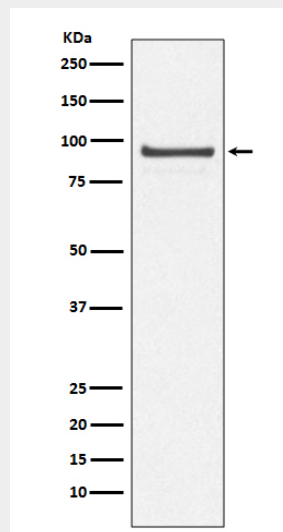
Nucleus. Cytoplasm, cytoskeleton, spindle

Anti-Cdc27/APC3 Rabbit Monoclonal Antibody - Protocols

Provided below are standard protocols that you may find useful for product applications.

- [Western Blot](#)
- [Blocking Peptides](#)
- [Dot Blot](#)
- [Immunohistochemistry](#)
- [Immunofluorescence](#)
- [Immunoprecipitation](#)
- [Flow Cytometry](#)
- [Cell Culture](#)

Anti-Cdc27/APC3 Rabbit Monoclonal Antibody - Images



Western blot analysis of Cdc27/APC3 expression in 293T cell lysate.