

**Anti-Histone H3 HIST1H3A Rabbit Monoclonal Antibody**  
Catalog # ABO14037**Specification****Anti-Histone H3 HIST1H3A Rabbit Monoclonal Antibody - Product Information**

Application	WB, IHC, IF, ICC
Primary Accession	<a href="#">P68431</a>
Host	Rabbit
Isotype	Rabbit IgG
Reactivity	Rat, Human, Mouse
Clonality	Monoclonal
Format	Liquid

**Description**

Anti-Histone H3 HIST1H3A Rabbit Monoclonal Antibody . Tested in WB, IHC, ICC/IF applications. This antibody reacts with Human, Mouse, Rat.

**Anti-Histone H3 HIST1H3A Rabbit Monoclonal Antibody - Additional Information**

**Gene ID** 8350;8351;8352;8353;8354;8355;8356;8357;8358;8968

**Other Names**

Histone H3.1, Histone H3/a, Histone H3/b, Histone H3/c, Histone H3/d, Histone H3/f, Histone H3/h, Histone H3/i, Histone H3/j, Histone H3/k, Histone H3/l, H3C1 ([http://www.genenames.org/cgi-bin/gene\\_symbol\\_report?hgnc\\_id=4766](http://www.genenames.org/cgi-bin/gene_symbol_report?hgnc_id=4766)), H3FA, HIST1H3A

**Calculated MW**

15404 MW KDa

**Application Details**

WB 1:1000-1:2000<br>IHC 1:1000-1:2000<br>ICC/IF 1:1000-1:2000

**Subcellular Localization**

Nucleus. Chromosome.

**Contents**

Rabbit IgG in phosphate buffered saline, pH 7.4, 150mM NaCl, 0.02% sodium azide and 50% glycerol, 0.4-0.5mg/ml BSA.

**Immunogen**

A synthesized peptide derived from human Histone H3

**Purification**

Affinity-chromatography

**Storage**

**Store at -20°C for one year. For short term storage and frequent use, store at 4°C for up to one month. Avoid repeated freeze-thaw cycles.**

## Anti-Histone H3 HIST1H3A Rabbit Monoclonal Antibody - Protein Information

Name H3C1 ([HGNC:4766](#))

Synonyms H3FA, HIST1H3A

### Function

Core component of nucleosome. Nucleosomes wrap and compact DNA into chromatin, limiting DNA accessibility to the cellular machineries which require DNA as a template. Histones thereby play a central role in transcription regulation, DNA repair, DNA replication and chromosomal stability. DNA accessibility is regulated via a complex set of post-translational modifications of histones, also called histone code, and nucleosome remodeling.

### Cellular Location

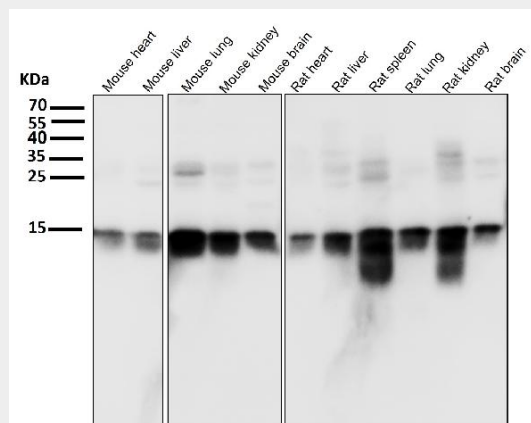
Nucleus. Chromosome.

## Anti-Histone H3 HIST1H3A Rabbit Monoclonal Antibody - Protocols

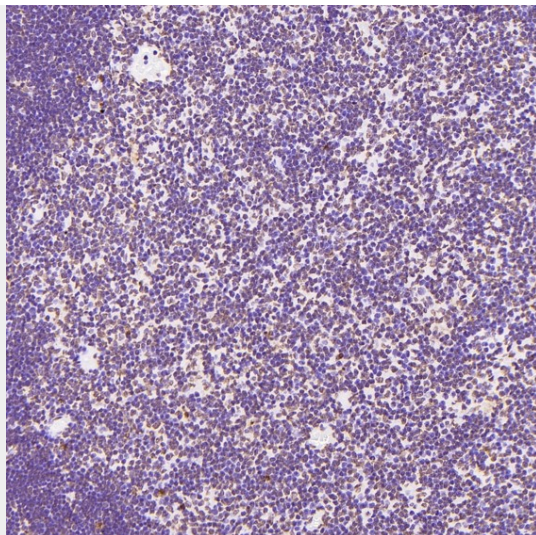
Provided below are standard protocols that you may find useful for product applications.

- [Western Blot](#)
- [Blocking Peptides](#)
- [Dot Blot](#)
- [Immunohistochemistry](#)
- [Immunofluorescence](#)
- [Immunoprecipitation](#)
- [Flow Cytometry](#)
- [Cell Culture](#)

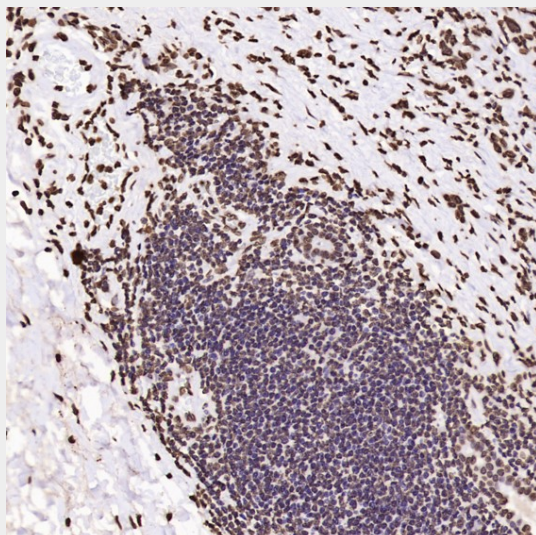
## Anti-Histone H3 HIST1H3A Rabbit Monoclonal Antibody - Images



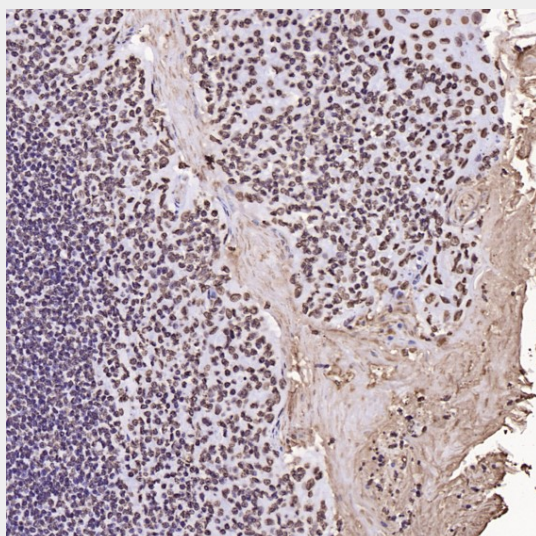
All lanes use the Antibody at 1:5K dilution for 1 hour at room temperature.



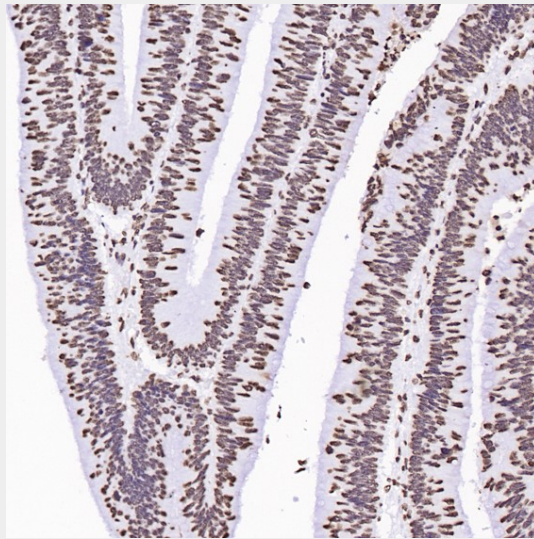
Immunohistochemical analysis of paraffin-embedded Rat thymus, using the Antibody at 1:3000 dilution.



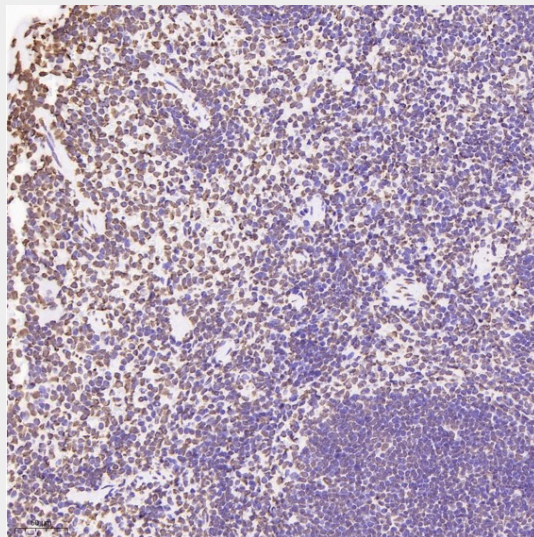
Immunohistochemical analysis of paraffin-embedded Human esophageal carcinoma, using the Antibody at 1:2000 dilution.



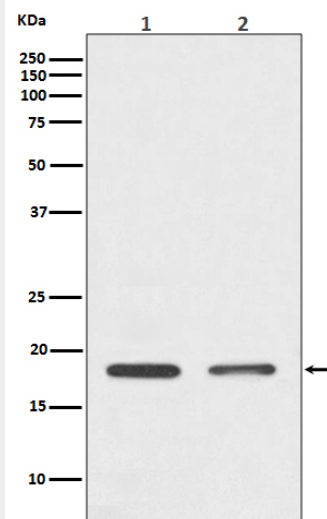
Immunohistochemical analysis of paraffin-embedded Human tonsil, using the Antibody at 1:2000 dilution.



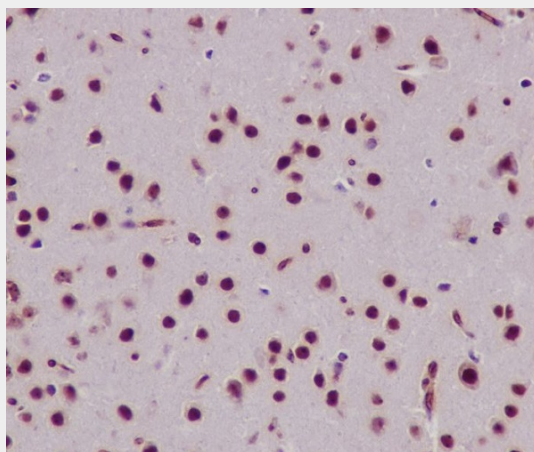
Immunohistochemical analysis of paraffin-embedded Human colon cancer, using the Antibody at 1:6000 dilution.



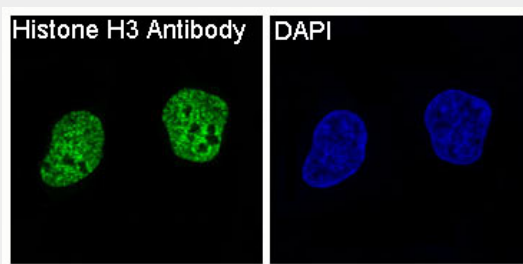
Immunohistochemical analysis of paraffin-embedded Mouse spleen, using the Antibody at 1:3000 dilution.



Western blot analysis of Histone H3 expression in (1) HeLa cell lysate; (2) 3T3 cell lysate.



Immunohistochemical analysis of paraffin-embedded mouse brain, using Histone H3 Antibody.



Immunofluorescent analysis of HeLa cells, using Histone H3 Antibody.