

**Anti-E Cadherin Rabbit Monoclonal Antibody**  
Catalog # ABO14014**Specification****Anti-E Cadherin Rabbit Monoclonal Antibody - Product Information**

Application	WB, IHC, IF, ICC, FC
Primary Accession	<a href="#">P12830</a>
Host	Rabbit
Isotype	Rabbit IgG
Reactivity	Human
Clonality	Monoclonal
Format	Liquid

**Description**

Anti-E Cadherin Rabbit Monoclonal Antibody . Tested in WB, IHC, ICC/IF, Flow Cytometry applications. This antibody reacts with Human.

**Anti-E Cadherin Rabbit Monoclonal Antibody - Additional Information**

**Gene ID** 999

**Other Names**

Cadherin-1 {ECO:0000312|HGNC:HGNC:1748}, CAM 120/80, Epithelial cadherin, E-cadherin {ECO:0000312|HGNC:HGNC:1748}, Uvomorulin, CD324, E-Cad/CTF1, E-Cad/CTF2, E-Cad/CTF3, CDH1 ([HGNC:1748](http://www.genenames.org/cgi-bin/gene_symbol_report?hgnc_id=1748))

**Calculated MW**

97456 MW KDa

**Application Details**

WB 1:5000-1:10000<br>IHC 1:100-1:500<br>ICC/IF 1:100-1:500<br>FC 1:500

**Tissue Specificity**

Non-neural epithelial tissues.

**Contents**

Rabbit IgG in phosphate buffered saline, pH 7.4, 150mM NaCl, 0.02% sodium azide and 50% glycerol, 0.4-0.5mg/ml BSA.

**Immunogen**

A synthesized peptide derived from human E Cadherin

**Purification**

Affinity-chromatography

**Storage**

**Store at -20°C for one year. For short term storage and frequent use, store at 4°C for up to one month. Avoid repeated freeze-thaw cycles.**

## Anti-E Cadherin Rabbit Monoclonal Antibody - Protein Information

Name CDH1 ([HGNC:1748](#))

### Function

Cadherins are calcium-dependent cell adhesion proteins (PubMed:[11976333](http://www.uniprot.org/citations/11976333)). They preferentially interact with themselves in a homophilic manner in connecting cells; cadherins may thus contribute to the sorting of heterogeneous cell types. CDH1 is involved in mechanisms regulating cell-cell adhesions, mobility and proliferation of epithelial cells (PubMed:[11976333](http://www.uniprot.org/citations/11976333)). Promotes organization of radial actin fiber structure and cellular response to contractile forces, via its interaction with AMOTL2 which facilitates anchoring of radial actin fibers to CDH1 junction complexes at the cell membrane (By similarity). Has a potent invasive suppressor role. It is a ligand for integrin alpha-E/beta-7.

### Cellular Location

Cell junction, adherens junction. Cell membrane; Single-pass type I membrane protein Endosome. Golgi apparatus, trans-Golgi network. Cytoplasm. Cell junction, desmosome Note=Colocalizes with DLGAP5 at sites of cell-cell contact in intestinal epithelial cells. Anchored to actin microfilaments through association with alpha-, beta- and gamma-catenin. Sequential proteolysis induced by apoptosis or calcium influx, results in translocation from sites of cell-cell contact to the cytoplasm Colocalizes with RAB11A endosomes during its transport from the Golgi apparatus to the plasma membrane. Recruited to desmosomes at the initial assembly phase and also accumulates progressively at mature desmosome cell-cell junctions (PubMed:25208567). Localizes to cell-cell contacts as keratinocyte differentiation progresses (By similarity) {ECO:0000250|UniProtKB:P09803, ECO:0000269|PubMed:25208567}

### Tissue Location

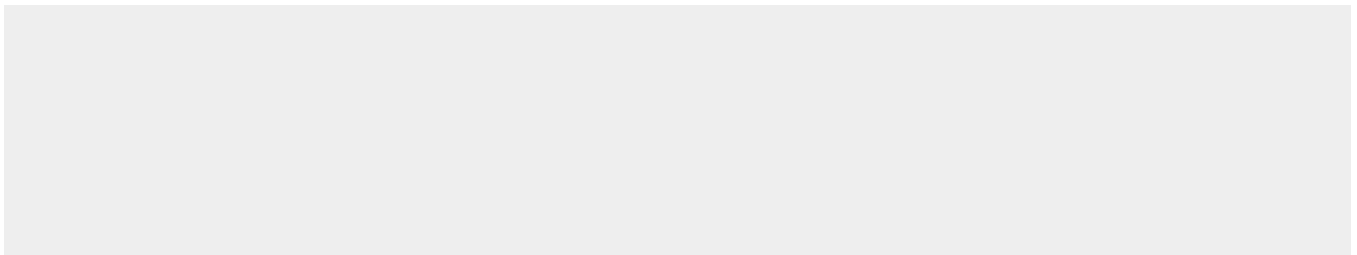
Expressed in granuloma macrophages (at protein level) (PubMed:27760340). Expressed in the skin (at protein level) (PubMed:22294297). Expressed in the liver (PubMed:3263290)

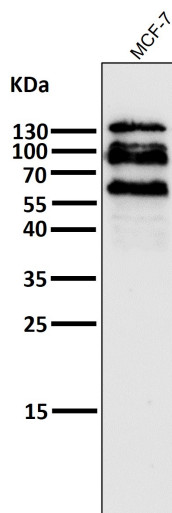
## Anti-E Cadherin Rabbit Monoclonal Antibody - Protocols

Provided below are standard protocols that you may find useful for product applications.

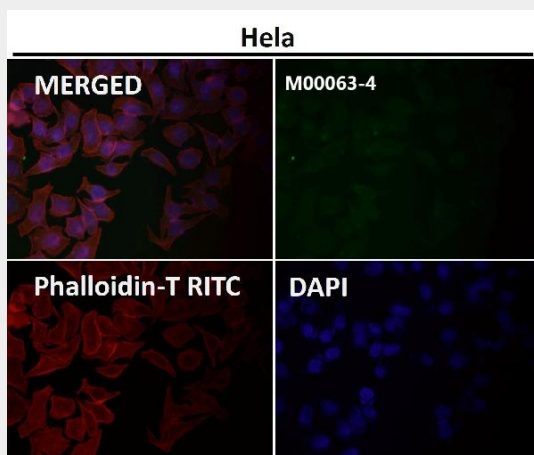
- [Western Blot](#)
- [Blocking Peptides](#)
- [Dot Blot](#)
- [Immunohistochemistry](#)
- [Immunofluorescence](#)
- [Immunoprecipitation](#)
- [Flow Cytometry](#)
- [Cell Culture](#)

## Anti-E Cadherin Rabbit Monoclonal Antibody - Images

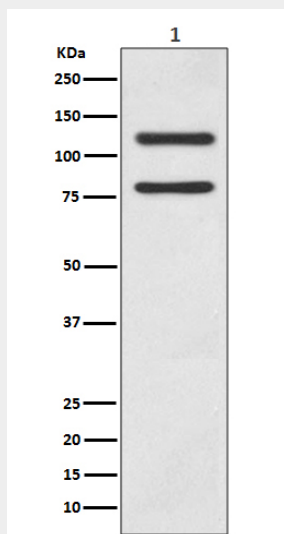




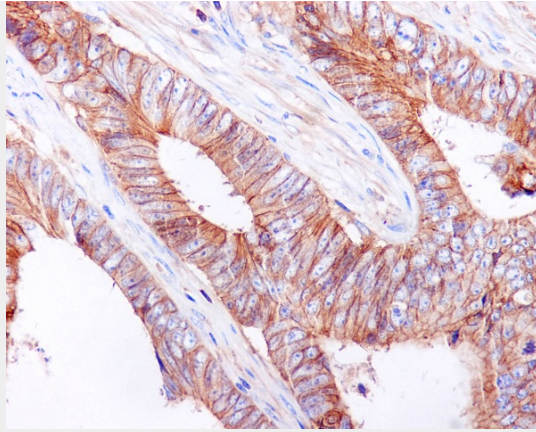
All lanes use the Antibody at 1:6W dilution for 1 hour at room temperature.



Immunofluorescent analysis using the Antibody at 1:50 dilution.



Western blot analysis of E-cadherin expression in MCF7 cell lysate.



Immunohistochemical analysis of paraffin-embedded human colon cancer, using E Cadherin Antibody.