

Anti-beta Actin ACTB Rabbit Monoclonal Antibody
Catalog # ABO14013**Specification****Anti-beta Actin ACTB Rabbit Monoclonal Antibody - Product Information**

| | |
|-------------------|------------------------|
| Application | WB, IHC, IF, ICC |
| Primary Accession | P60709 |
| Host | Rabbit |
| Isotype | Rabbit IgG |
| Reactivity | Rat, Human, Mouse |
| Clonality | Monoclonal |
| Format | Liquid |

Description

Anti-beta Actin ACTB Rabbit Monoclonal Antibody . Tested in WB, IHC, ICC/IF applications. This antibody reacts with Human, Mouse, Rat.

Anti-beta Actin ACTB Rabbit Monoclonal Antibody - Additional Information

Gene ID 60

Other Names

Actin, cytoplasmic 1, 3.6.4.-, Beta-actin, Actin, cytoplasmic 1, N-terminally processed, ACTB

Calculated MW

41737 MW KDa

Application Details

WB 1:5000-1:50000
IHC 1:50-1:200
ICC/IF 1:50-1:200

Subcellular Localization

Cytoplasm, cytoskeleton. Localized in cytoplasmic mRNP granules containing untranslated mRNAs.

Contents

Rabbit IgG in phosphate buffered saline, pH 7.4, 150mM NaCl, 0.02% sodium azide and 50% glycerol, 0.4-0.5mg/ml BSA.

Immunogen

A synthesized peptide derived from human beta Actin

Purification

Affinity-chromatography

Storage

Store at -20°C for one year. For short term storage and frequent use, store at 4°C for up to one month. Avoid repeated freeze-thaw cycles.

Anti-beta Actin ACTB Rabbit Monoclonal Antibody - Protein Information

Name ACTB

Function

Actin is a highly conserved protein that polymerizes to produce filaments that form cross-linked networks in the cytoplasm of cells (PubMed:25255767, PubMed:29581253). Actin exists in both monomeric (G-actin) and polymeric (F-actin) forms, both forms playing key functions, such as cell motility and contraction (PubMed:29581253). In addition to their role in the cytoplasmic cytoskeleton, G- and F- actin also localize in the nucleus, and regulate gene transcription and motility and repair of damaged DNA (PubMed:29925947). Part of the ACTR1A/ACTB filament around which the dynactin complex is built. The dynactin multiprotein complex activates the molecular motor dynein for ultra-processive transport along microtubules (By similarity).

Cellular Location

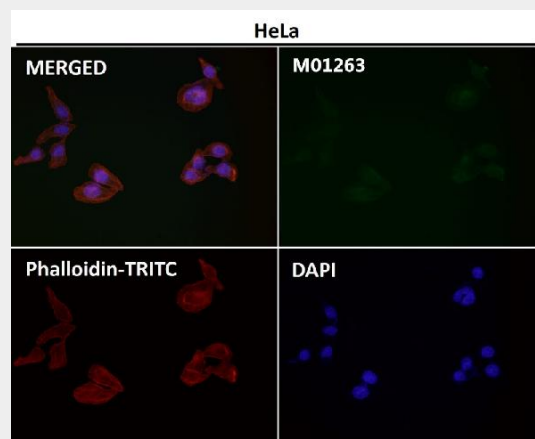
Cytoplasm, cytoskeleton. Nucleus Note=Localized in cytoplasmic mRNP granules containing untranslated mRNAs.

Anti-beta Actin ACTB Rabbit Monoclonal Antibody - Protocols

Provided below are standard protocols that you may find useful for product applications.

- [Western Blot](#)
- [Blocking Peptides](#)
- [Dot Blot](#)
- [Immunohistochemistry](#)
- [Immunofluorescence](#)
- [Immunoprecipitation](#)
- [Flow Cytometry](#)
- [Cell Culture](#)

Anti-beta Actin ACTB Rabbit Monoclonal Antibody - Images



Immunofluorescent analysis using the Antibody at 1:50 dilution.

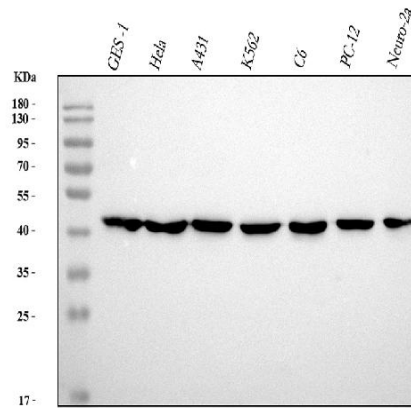


Figure 1. Western blot analysis of Beta Actin using anti-Beta Actin antibody (M01263). Electrophoresis was performed on a 5-20% SDS-PAGE gel at 70V (Stacking gel) / 90V (Resolving gel) for 2-3 hours. The sample well of each lane was loaded with 30 ug of sample under reducing conditions.

- Lane 1: human GES-1 whole cell lysates,
- Lane 2: human Hela whole cell lysates,
- Lane 3: human A431 whole cell lysates,
- Lane 4: human K562 whole cell lysates,
- Lane 5: rat C6 whole cell lysates,
- Lane 6: rat PC-12 whole cell lysates,
- Lane 7: mouse Neuro-2a whole cell lysates.

After electrophoresis, proteins were transferred to a nitrocellulose membrane at 150 mA for 50-90 minutes. Blocked the membrane with 5% non-fat milk/TBS for 1.5 hour at RT. The membrane was incubated with rabbit anti-Beta Actin antigen affinity purified monoclonal antibody (Catalog # M01263) at 1:5000 overnight at 4°C, then washed with TBS-0.1%Tween 3 times with 5 minutes each and probed with a goat anti-rabbit IgG-HRP secondary antibody at a dilution of 1:500 for 1.5 hour at RT. The signal is developed using an Enhanced Chemiluminescent detection (ECL) kit (Catalog # EK1002) with Tanon 5200 system. A specific band was detected for Beta Actin at approximately 42 kDa. The expected band size for Beta Actin is at 42 kDa.