

**Anti-Calpain 1 CAPN1 Rabbit Monoclonal Antibody**  
Catalog # ABO14011**Specification****Anti-Calpain 1 CAPN1 Rabbit Monoclonal Antibody - Product Information**

Application	WB, IHC, IF, ICC, FC
Primary Accession	<a href="#">P07384</a>
Host	Rabbit
Isotype	Rabbit IgG
Reactivity	Rat, Human, Mouse
Clonality	Monoclonal
Format	Liquid

**Description**

Anti-Calpain 1 CAPN1 Rabbit Monoclonal Antibody . Tested in WB, IHC, ICC/IF, Flow Cytometry applications. This antibody reacts with Human, Mouse, Rat.

**Anti-Calpain 1 CAPN1 Rabbit Monoclonal Antibody - Additional Information**

**Gene ID** 823

**Other Names**

Calpain-1 catalytic subunit, 3.4.22.52, Calcium-activated neutral proteinase 1, CANP 1, Calpain mu-type, Calpain-1 large subunit, Cell proliferation-inducing gene 30 protein {ECO:0000303|Ref.3}, Micromolar-calpain, muCANP, CAPN1 ([http://www.genenames.org/cgi-bin/gene\\_symbol\\_report?hgnc\\_id=1476](http://www.genenames.org/cgi-bin/gene_symbol_report?hgnc_id=1476) target="\_blank">HGNC:1476</a>), CANPL1

**Calculated MW**

81890 MW KDa

**Application Details**

WB 1:500-1:2000<br>IHC 1:50-1:200<br>ICC/IF 1:50-1:200<br>FC 1:100

**Subcellular Localization**

Cytoplasm. Cell membrane. Translocates to the plasma membrane upon Ca (2+) binding. In granular keratinocytes and in lower corneocytes, colocalizes with FLG and FLG2 (PubMed:21531719)..

**Tissue Specificity**

Ubiquitous.

**Contents**

Rabbit IgG in phosphate buffered saline, pH 7.4, 150mM NaCl, 0.02% sodium azide and 50% glycerol, 0.4-0.5mg/ml BSA.

**Immunogen**

A synthesized peptide derived from human Calpain 1

**Purification**

Affinity-chromatography

Storage

**Store at -20°C for one year. For short term storage and frequent use, store at 4°C for up to one month. Avoid repeated freeze-thaw cycles.**

## Anti-Calpain 1 CAPN1 Rabbit Monoclonal Antibody - Protein Information

**Name** CAPN1 ([HGNC:1476](#))

**Synonyms** CANPL1

### Function

Calcium-regulated non-lysosomal thiol-protease which catalyzes limited proteolysis of substrates involved in cytoskeletal remodeling and signal transduction (PubMed:[19617626](http://www.uniprot.org/citations/19617626), PubMed:[21531719](http://www.uniprot.org/citations/21531719), PubMed:[2400579](http://www.uniprot.org/citations/2400579)). Proteolytically cleaves CTBP1 at 'Asn-375', 'Gly-387' and 'His-409' (PubMed:[23707407](http://www.uniprot.org/citations/23707407)). Cleaves and activates caspase-7 (CASP7) (PubMed:[19617626](http://www.uniprot.org/citations/19617626)).

### Cellular Location

Cytoplasm. Cell membrane. Note=Translocates to the plasma membrane upon Ca(2+) binding. In granular keratinocytes and in lower corneocytes, colocalizes with FLG and FLG2 (PubMed:21531719)

### Tissue Location

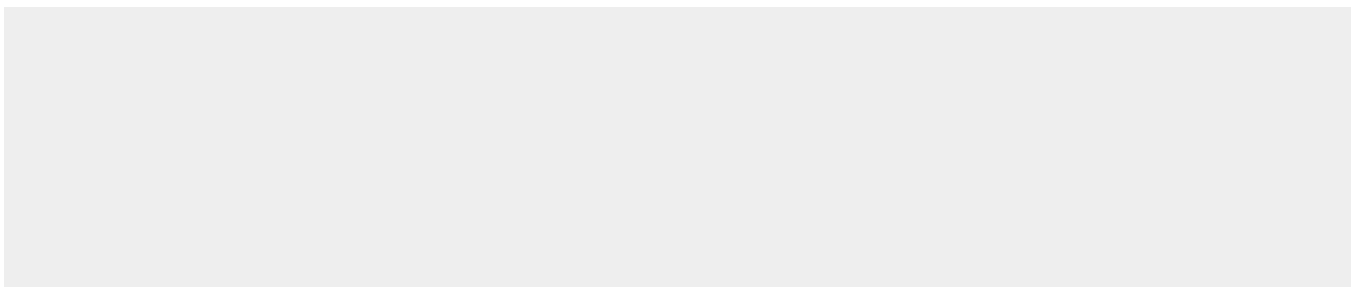
Ubiquitous.

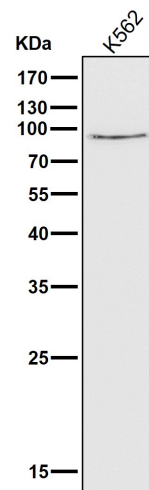
## Anti-Calpain 1 CAPN1 Rabbit Monoclonal Antibody - Protocols

Provided below are standard protocols that you may find useful for product applications.

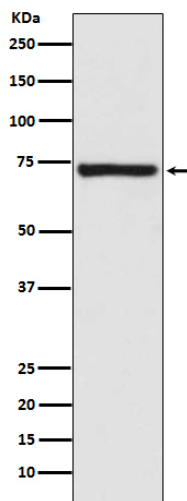
- [Western Blot](#)
- [Blocking Peptides](#)
- [Dot Blot](#)
- [Immunohistochemistry](#)
- [Immunofluorescence](#)
- [Immunoprecipitation](#)
- [Flow Cytometry](#)
- [Cell Culture](#)

## Anti-Calpain 1 CAPN1 Rabbit Monoclonal Antibody - Images





All lanes use the Antibody at 1:1K dilution for 1 hour at room temperature.



Western blot analysis of Calpain 1 expression in Human fetal kidney lysate.