

Anti-IKK gamma IKBKG Rabbit Monoclonal Antibody
Catalog # ABO14007**Specification****Anti-IKK gamma IKBKG Rabbit Monoclonal Antibody - Product Information**

Application	WB, IHC, IF, ICC, IP, FC
Primary Accession	Q9Y6K9
Host	Rabbit
Isotype	Rabbit IgG
Reactivity	Rat, Human, Mouse
Clonality	Monoclonal
Format	Liquid

Description

Anti-IKK gamma IKBKG Rabbit Monoclonal Antibody . Tested in WB, IHC, ICC/IF, IP, Flow Cytometry applications. This antibody reacts with Human, Mouse, Rat.

Anti-IKK gamma IKBKG Rabbit Monoclonal Antibody - Additional Information

Gene ID 8517

Other Names

NF-kappa-B essential modulator, NEMO, FIP-3, Ikb kinase-associated protein 1, IKKAP1, Inhibitor of nuclear factor kappa-B kinase subunit gamma, I-kappa-B kinase subunit gamma, IKK-gamma, IKKG, Ikb kinase subunit gamma, NF-kappa-B essential modifier, IKBKG ([HGNC:5961](http://www.genenames.org/cgi-bin/gene_symbol_report?hgnc_id=5961)), FIP3, NEMO

Calculated MW

48198 MW KDa

Application Details

WB 1:500-1:2000
IHC 1:50-1:200
ICC/IF 1:50-1:200
IP 1:50
FC 1:50

Subcellular Localization

Cytoplasm. Nucleus. Sumoylated NEMO accumulates in the nucleus in response to genotoxic stress.

Tissue Specificity

Heart, brain, placenta, lung, liver, skeletal muscle, kidney and pancreas.

Contents

Rabbit IgG in phosphate buffered saline, pH 7.4, 150mM NaCl, 0.02% sodium azide and 50% glycerol, 0.4-0.5mg/ml BSA.

Immunogen

A synthesized peptide derived from human IKK gamma

Purification

Affinity-chromatography

Storage

Store at -20°C for one year. For short term storage and frequent use, store at 4°C for up to one month. Avoid repeated freeze-thaw cycles.

Anti-IKK gamma IKBKG Rabbit Monoclonal Antibody - Protein Information

Name IKBKG ([HGNC:5961](#))

Synonyms FIP3, NEMO

Function

Regulatory subunit of the IKK core complex which phosphorylates inhibitors of NF-kappa-B thus leading to the dissociation of the inhibitor/NF-kappa-B complex and ultimately the degradation of the inhibitor (PubMed: [14695475](http://www.uniprot.org/citations/14695475)), PubMed: [20724660](http://www.uniprot.org/citations/20724660), PubMed: [21518757](http://www.uniprot.org/citations/21518757), PubMed: [9751060](http://www.uniprot.org/citations/9751060)). Its binding to scaffolding polyubiquitin plays a key role in IKK activation by multiple signaling receptor pathways (PubMed: [16547522](http://www.uniprot.org/citations/16547522), PubMed: [18287044](http://www.uniprot.org/citations/18287044), PubMed: [19033441](http://www.uniprot.org/citations/19033441), PubMed: [19185524](http://www.uniprot.org/citations/19185524), PubMed: [21606507](http://www.uniprot.org/citations/21606507), PubMed: [27777308](http://www.uniprot.org/citations/27777308), PubMed: [33567255](http://www.uniprot.org/citations/33567255)). Can recognize and bind both 'Lys-63'-linked and linear polyubiquitin upon cell stimulation, with a much higher affinity for linear polyubiquitin (PubMed: [16547522](http://www.uniprot.org/citations/16547522), PubMed: [18287044](http://www.uniprot.org/citations/18287044), PubMed: [19033441](http://www.uniprot.org/citations/19033441), PubMed: [19185524](http://www.uniprot.org/citations/19185524), PubMed: [21606507](http://www.uniprot.org/citations/21606507), PubMed: [27777308](http://www.uniprot.org/citations/27777308)). Could be implicated in NF-kappa-B-mediated protection from cytokine toxicity. Essential for viral activation of IRF3 (PubMed: [19854139](http://www.uniprot.org/citations/19854139)). Involved in TLR3- and IFIH1-mediated antiviral innate response; this function requires 'Lys- 27'-linked polyubiquitination (PubMed: [20724660](http://www.uniprot.org/citations/20724660)).

Cellular Location

Cytoplasm. Nucleus Note=Sumoylated NEMO accumulates in the nucleus in response to genotoxic stress.

Tissue Location

Heart, brain, placenta, lung, liver, skeletal muscle, kidney and pancreas

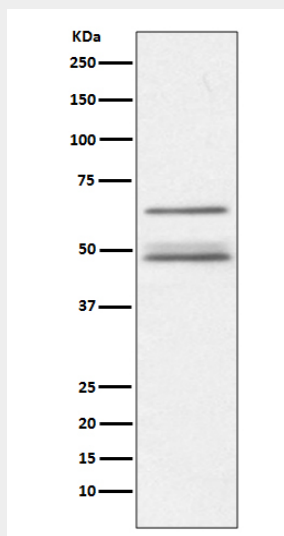
Anti-IKK gamma IKBKG Rabbit Monoclonal Antibody - Protocols

Provided below are standard protocols that you may find useful for product applications.

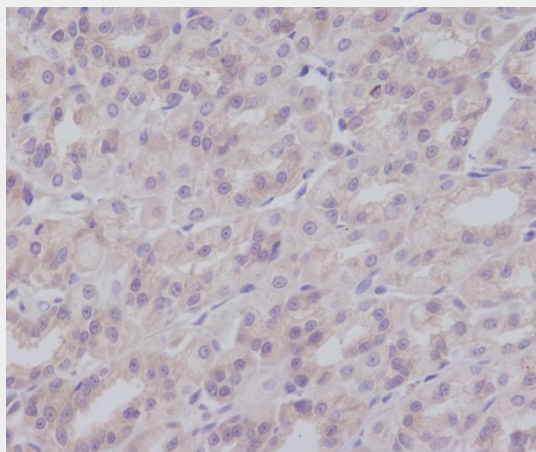
- [Western Blot](#)
- [Blocking Peptides](#)

- [Dot Blot](#)
- [Immunohistochemistry](#)
- [Immunofluorescence](#)
- [Immunoprecipitation](#)
- [Flow Cytometry](#)
- [Cell Culture](#)

Anti-IKK gamma IKBKG Rabbit Monoclonal Antibody - Images



Western blot analysis of IKK gamma expression in Jurkat cell lysate.



Immunohistochemical analysis of paraffin-embedded mouse colon, using IKK gamma Antibody.