

Anti-Annexin V ANXA5 Rabbit Monoclonal Antibody
Catalog # ABO14002**Specification****Anti-Annexin V ANXA5 Rabbit Monoclonal Antibody - Product Information**

Application	WB, IF, ICC, FC
Primary Accession	P08758
Host	Rabbit
Isotype	Rabbit IgG
Reactivity	Rat, Human, Mouse
Clonality	Monoclonal
Format	Liquid

Description

Anti-Annexin V ANXA5 Rabbit Monoclonal Antibody . Tested in WB, ICC/IF, Flow Cytometry applications. This antibody reacts with Human, Mouse, Rat.

Anti-Annexin V ANXA5 Rabbit Monoclonal Antibody - Additional Information

Gene ID 308

Other Names

Annexin A5, Anchorin CII, Annexin V, Annexin-5, Calphobindin I, CPB-I, Endonexin II, Lipocortin V, Placental anticoagulant protein 4, PP4, Placental anticoagulant protein I, PAP-I, Thromboplastin inhibitor, Vascular anticoagulant-alpha, VAC-alpha, ANXA5, ANX5, ENX2, PP4

Calculated MW

35937 MW KDa

Application Details

WB 1:1000-1:5000
ICC/IF 1:50-1:200
FC 1:50

Contents

Rabbit IgG in phosphate buffered saline, pH 7.4, 150mM NaCl, 0.02% sodium azide and 50% glycerol, 0.4-0.5mg/ml BSA.

Immunogen

A synthesized peptide derived from human Annexin V

Purification

Affinity-chromatography

Storage

Store at -20°C for one year. For short term storage and frequent use, store at 4°C for up to one month. Avoid repeated freeze-thaw cycles.

Anti-Annexin V ANXA5 Rabbit Monoclonal Antibody - Protein Information

Name ANXA5

Synonyms ANX5, ENX2, PP4

Function

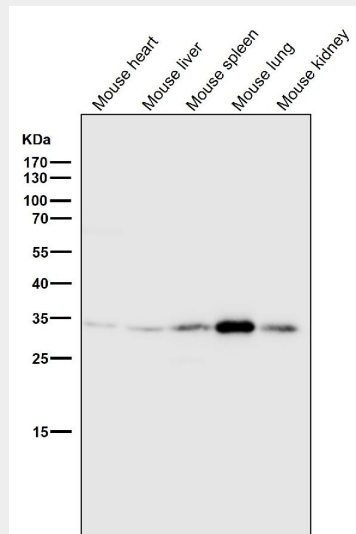
This protein is an anticoagulant protein that acts as an indirect inhibitor of the thromboplastin-specific complex, which is involved in the blood coagulation cascade.

Anti-Annexin V ANXA5 Rabbit Monoclonal Antibody - Protocols

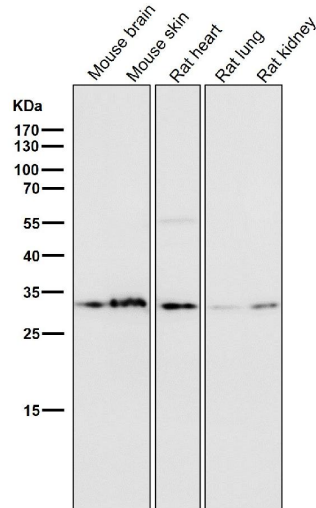
Provided below are standard protocols that you may find useful for product applications.

- [Western Blot](#)
- [Blocking Peptides](#)
- [Dot Blot](#)
- [Immunohistochemistry](#)
- [Immunofluorescence](#)
- [Immunoprecipitation](#)
- [Flow Cytometry](#)
- [Cell Culture](#)

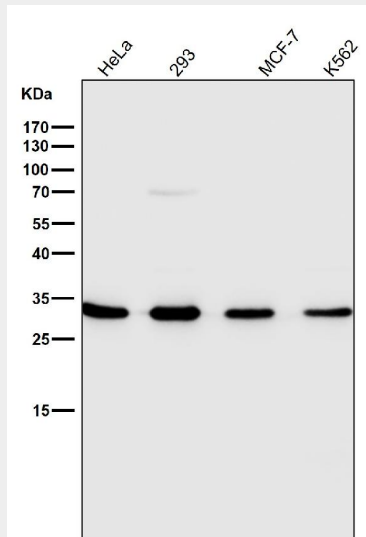
Anti-Annexin V ANXA5 Rabbit Monoclonal Antibody - Images



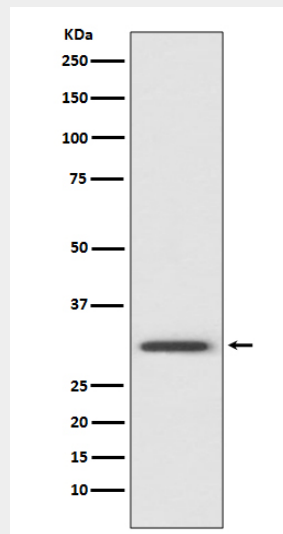
All lanes use the Antibody at 1:2W dilution for 1 hour at room temperature.



All lanes use the Antibody at 1:2W dilution for 1 hour at room temperature.



All lanes use the Antibody at 1:2W dilution for 1 hour at room temperature.



Western blot analysis of Annexin V expression in HeLa cell lysate.