

Anti-Calbindin CALB1 Rabbit Monoclonal Antibody
Catalog # ABO14001

Specification

Anti-Calbindin CALB1 Rabbit Monoclonal Antibody - Product Information

Application	WB, IHC, IF, ICC
Primary Accession	P05937
Host	Rabbit
Isotype	Rabbit IgG
Reactivity	Rat, Human, Mouse
Clonality	Monoclonal
Format	Liquid

Description

Anti-Calbindin CALB1 Rabbit Monoclonal Antibody . Tested in WB, IHC, ICC/IF applications. This antibody reacts with Human, Mouse, Rat.

Anti-Calbindin CALB1 Rabbit Monoclonal Antibody - Additional Information

Gene ID 793

Other Names

Calbindin, Calbindin D28, D-28K, Vitamin D-dependent calcium-binding protein, avian-type, CALB1, CAB27

Calculated MW

30025 MW KDa

Application Details

WB 1:500-1:2000
IHC 1:50-1:200
ICC/IF 1:50-1:200

Contents

Rabbit IgG in phosphate buffered saline, pH 7.4, 150mM NaCl, 0.02% sodium azide and 50% glycerol, 0.4-0.5mg/ml BSA.

Immunogen

A synthesized peptide derived from human Calbindin

Purification

Affinity-chromatography

Storage

Store at -20°C for one year. For short term storage and frequent use, store at 4°C for up to one month. Avoid repeated freeze-thaw cycles.

Anti-Calbindin CALB1 Rabbit Monoclonal Antibody - Protein Information

Name CALB1

Synonyms CAB27

Function

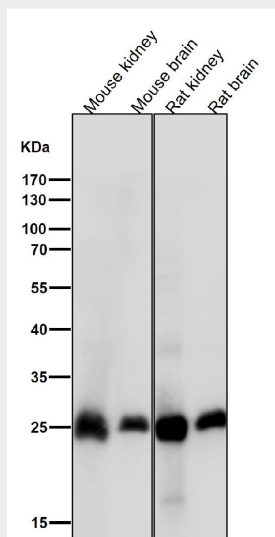
Buffers cytosolic calcium. May stimulate a membrane Ca(2+)- ATPase and a 3',5'-cyclic nucleotide phosphodiesterase.

Anti-Calbindin CALB1 Rabbit Monoclonal Antibody - Protocols

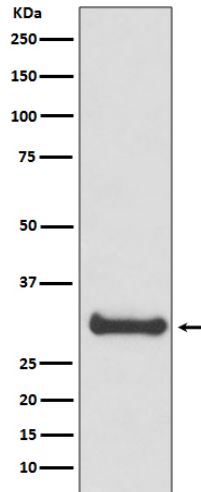
Provided below are standard protocols that you may find useful for product applications.

- [Western Blot](#)
- [Blocking Peptides](#)
- [Dot Blot](#)
- [Immunohistochemistry](#)
- [Immunofluorescence](#)
- [Immunoprecipitation](#)
- [Flow Cytometry](#)
- [Cell Culture](#)

Anti-Calbindin CALB1 Rabbit Monoclonal Antibody - Images



All lanes use the Antibody at 1:3K dilution for 1 hour at room temperature.



Western blot analysis of Calbindin expression in human fetal brain lysate.