

Anti-GC / VDBP Rabbit Monoclonal Antibody
Catalog # ABO14000

Specification

Anti-GC / VDBP Rabbit Monoclonal Antibody - Product Information

Application	WB, IHC, IF, ICC, FC
Primary Accession	P02774
Host	Rabbit
Isotype	Rabbit IgG
Reactivity	Human
Clonality	Monoclonal
Format	Liquid

Description

Anti-GC / VDBP Rabbit Monoclonal Antibody . Tested in WB, IHC, ICC/IF, Flow Cytometry applications. This antibody reacts with Human.

Anti-GC / VDBP Rabbit Monoclonal Antibody - Additional Information

Gene ID 2638

Other Names

Vitamin D-binding protein, DBP, VDB, Gc protein-derived macrophage activating factor, Gc-MAF, GcMAF, Gc-globulin, Group-specific component, Gc, Vitamin D-binding protein-macrophage activating factor, DBP-maf, GC

Calculated MW

52964 MW KDa

Application Details

WB 1:500-1:2000
IHC 1:50-1:200
ICC/IF 1:50-1:200
FC 1:30

Subcellular Localization

Secreted.

Tissue Specificity

Expressed in the liver. Found in plasma, ascites, cerebrospinal fluid and urine..

Contents

Rabbit IgG in phosphate buffered saline, pH 7.4, 150mM NaCl, 0.02% sodium azide and 50% glycerol, 0.4-0.5mg/ml BSA.

Immunogen

A synthesized peptide derived from human GC / VDBP

Purification

Affinity-chromatography

Storage

Store at -20°C for one year. For short term storage and frequent use, store at 4°C for

up to one month. Avoid repeated
freeze-thaw cycles.

Anti-GC / VDBP Rabbit Monoclonal Antibody - Protein Information

Name GC

Function

Involved in vitamin D transport and storage, scavenging of extracellular G-actin, enhancement of the chemotactic activity of C5 alpha for neutrophils in inflammation and macrophage activation.

Cellular Location

Secreted.

Tissue Location

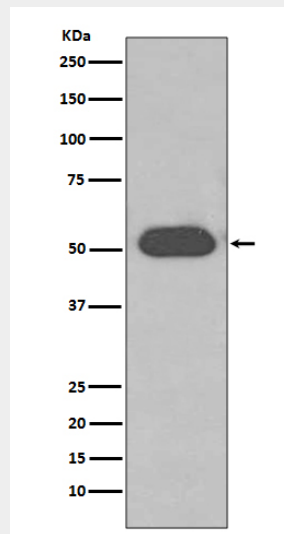
Expressed in the liver. Found in plasma, ascites, cerebrospinal fluid and urine.

Anti-GC / VDBP Rabbit Monoclonal Antibody - Protocols

Provided below are standard protocols that you may find useful for product applications.

- [Western Blot](#)
- [Blocking Peptides](#)
- [Dot Blot](#)
- [Immunohistochemistry](#)
- [Immunofluorescence](#)
- [Immunoprecipitation](#)
- [Flow Cytometry](#)
- [Cell Culture](#)

Anti-GC / VDBP Rabbit Monoclonal Antibody - Images



Western blot analysis of GC/VDBP expression in Human plasma lysate.