

Anti-Cyclin D3 CCND3 Rabbit Monoclonal Antibody
Catalog # ABO13989

Specification

Anti-Cyclin D3 CCND3 Rabbit Monoclonal Antibody - Product Information

Application	WB, IF, ICC, FC
Primary Accession	P30281
Host	Rabbit
Isotype	Rabbit IgG
Reactivity	Human, Mouse
Clonality	Monoclonal
Format	Liquid

Description

Anti-Cyclin D3 CCND3 Rabbit Monoclonal Antibody . Tested in WB, ICC/IF, Flow Cytometry applications. This antibody reacts with Human, Mouse.

Anti-Cyclin D3 CCND3 Rabbit Monoclonal Antibody - Additional Information

Gene ID 896

Other Names

G1/S-specific cyclin-D3, CCND3 {ECO:0000303|PubMed:1386336,
ECO:0000312|HGNC:HGNC:1585}

Calculated MW

32520 MW KDa

Application Details

WB 1:1000-1:2000
ICC/IF 1:50-1:200
FC 1:30

Subcellular Localization

Nucleus. Cytoplasm. Membrane. Cyclin D-CDK4 complexes accumulate at the nuclear membrane and are then translocated to the nucleus through interaction with KIP/CIP family members..

Contents

Rabbit IgG in phosphate buffered saline, pH 7.4, 150mM NaCl, 0.02% sodium azide and 50% glycerol, 0.4-0.5mg/ml BSA.

Immunogen

A synthesized peptide derived from human Cyclin D3

Purification

Affinity-chromatography

Storage

Store at -20°C for one year. For short term storage and frequent use, store at 4°C for up to one month. Avoid repeated freeze-thaw cycles.

Anti-Cyclin D3 CCND3 Rabbit Monoclonal Antibody - Protein Information

Name CCND3 {ECO:0000303|PubMed:1386336, ECO:0000312|HGNC:HGNC:1585}

Function

Regulatory component of the cyclin D3-CDK4 (DC) complex that phosphorylates and inhibits members of the retinoblastoma (RB) protein family including RB1 and regulates the cell-cycle during G(1)/S transition (PubMed:8114739). Phosphorylation of RB1 allows dissociation of the transcription factor E2F from the RB/E2F complex and the subsequent transcription of E2F target genes which are responsible for the progression through the G(1) phase (PubMed:8114739). Hypophosphorylates RB1 in early G(1) phase (PubMed:8114739). Cyclin D- CDK4 complexes are major integrators of various mitogenenic and antimitogenic signals (PubMed:8114739). Component of the ternary complex, cyclin D3/CDK4/CDKN1B, required for nuclear translocation and activity of the cyclin D-CDK4 complex (PubMed:16782892). Shows transcriptional coactivator activity with ATF5 independently of CDK4 (PubMed:15358120).

Cellular Location

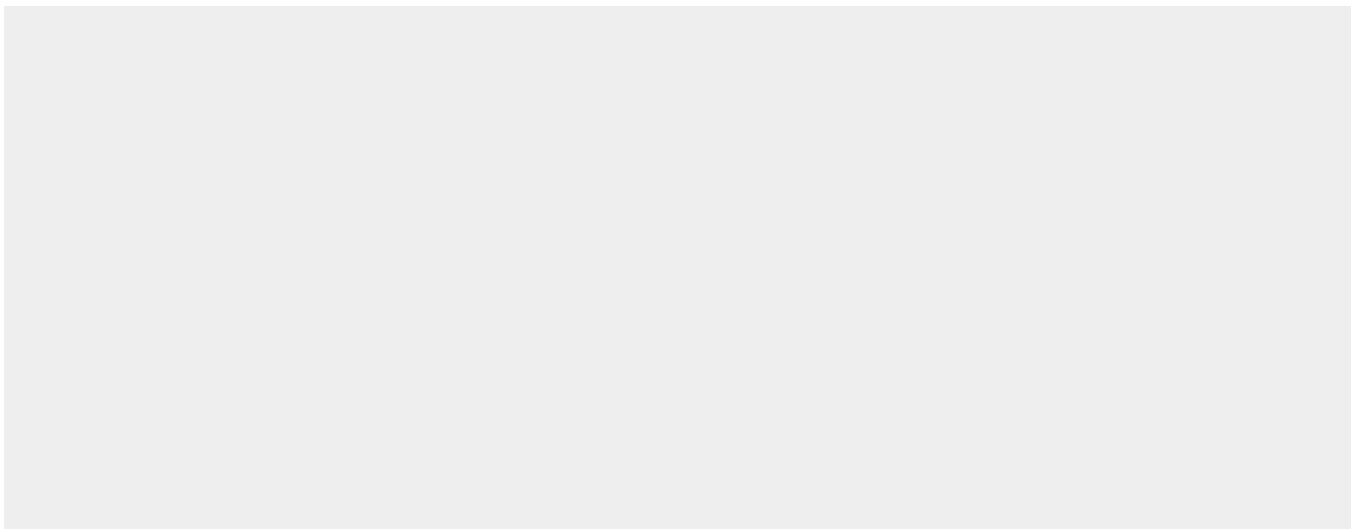
Nucleus. Cytoplasm

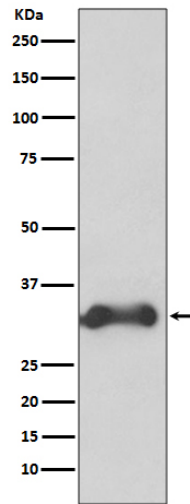
Anti-Cyclin D3 CCND3 Rabbit Monoclonal Antibody - Protocols

Provided below are standard protocols that you may find useful for product applications.

- [Western Blot](#)
- [Blocking Peptides](#)
- [Dot Blot](#)
- [Immunohistochemistry](#)
- [Immunofluorescence](#)
- [Immunoprecipitation](#)
- [Flow Cytometry](#)
- [Cell Culture](#)

Anti-Cyclin D3 CCND3 Rabbit Monoclonal Antibody - Images





Western blot analysis of Cyclin D3 expression in K562 cell lysate.