

Anti-Cyclin E2 CCNE2 Rabbit Monoclonal Antibody
Catalog # ABO13988**Specification****Anti-Cyclin E2 CCNE2 Rabbit Monoclonal Antibody - Product Information**

Application	WB, IHC, IF, ICC, FC
Primary Accession	O96020
Host	Rabbit
Isotype	Rabbit IgG
Reactivity	Human, Mouse
Clonality	Monoclonal
Format	Liquid

Description

Anti-Cyclin E2 CCNE2 Rabbit Monoclonal Antibody . Tested in WB, IHC, ICC/IF, Flow Cytometry applications. This antibody reacts with Human, Mouse.

Anti-Cyclin E2 CCNE2 Rabbit Monoclonal Antibody - Additional Information

Gene ID 9134

Other Names

G1/S-specific cyclin-E2, CCNE2

Calculated MW

46757 MW KDa

Application Details

WB 1:500-1:1000
IHC 1:50-1:200
ICC/IF 1:100-1:500
FC 1:20

Subcellular Localization

Nucleus.

Tissue Specificity

According to PubMed:9858585, highest levels of expression in adult testis, thymus and brain. Lower levels in placenta, spleen and colon. Consistently elevated levels in tumor- derived cells compared to non-transformed proliferating cells. According to PubMed:9840927: low levels in thymus, prostate, brain, skeletal muscle, and kidney. Elevated levels in lung. According to PubMed:9840943 highly expressed in testis, placenta, thymus and brain. In a lesser extent in small intestine and colon.

Contents

Rabbit IgG in phosphate buffered saline, pH 7.4, 150mM NaCl, 0.02% sodium azide and 50% glycerol, 0.4-0.5mg/ml BSA.

Immunogen

A synthesized peptide derived from human Cyclin E2

Purification

Affinity-chromatography

Storage

Store at -20°C for one year. For short term storage and frequent use, store at 4°C for up to one month. Avoid repeated freeze-thaw cycles.

Anti-Cyclin E2 CCNE2 Rabbit Monoclonal Antibody - Protein Information

Name CCNE2

Function

Essential for the control of the cell cycle at the late G1 and early S phase.

Cellular Location

Nucleus.

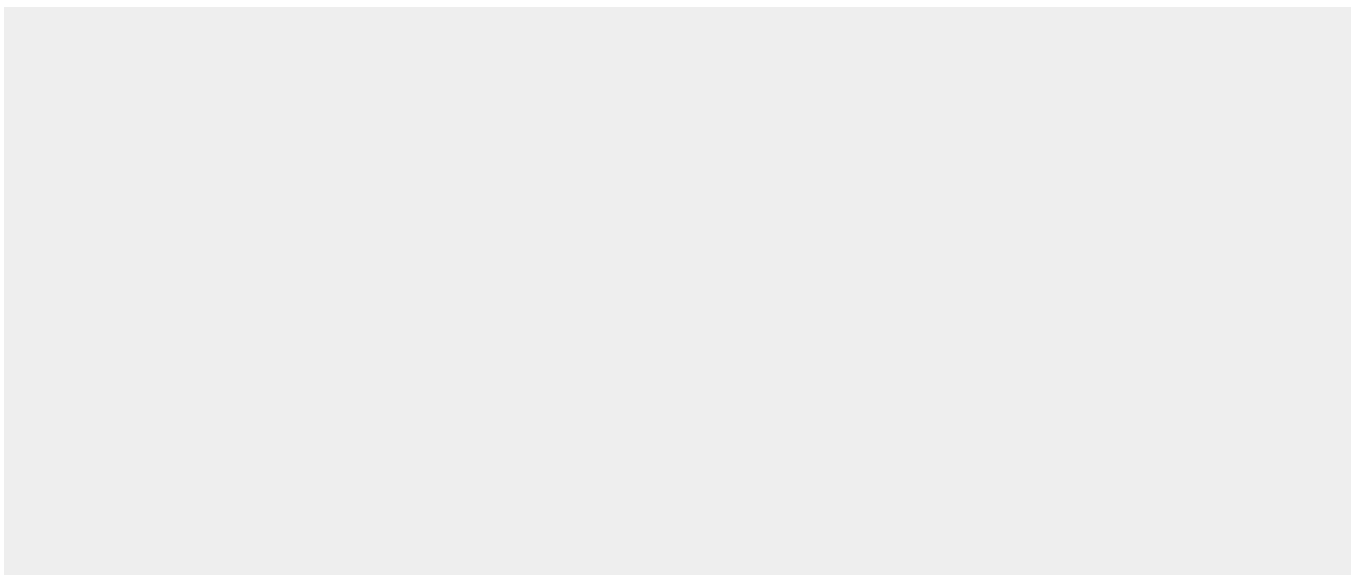
Tissue Location

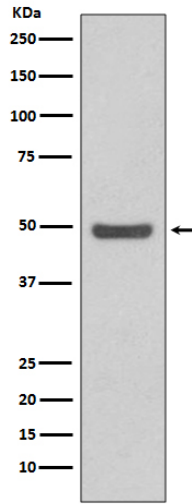
According to PubMed:9858585, highest levels of expression in adult testis, thymus and brain. Lower levels in placenta, spleen and colon. Consistently elevated levels in tumor-derived cells compared to non-transformed proliferating cells. According to PubMed:9840927: low levels in thymus, prostate, brain, skeletal muscle, and kidney. Elevated levels in lung. According to PubMed:9840943 highly expressed in testis, placenta, thymus and brain. In a lesser extent in small intestine and colon

Anti-Cyclin E2 CCNE2 Rabbit Monoclonal Antibody - Protocols

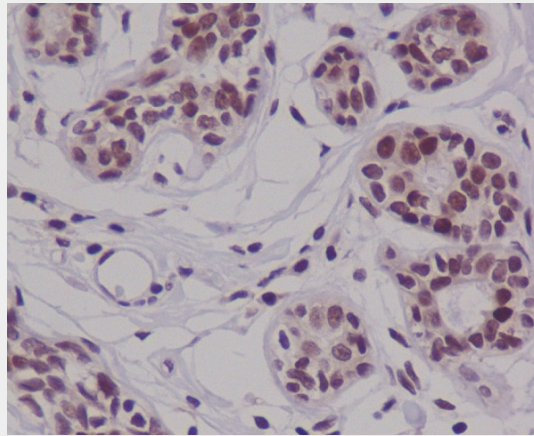
Provided below are standard protocols that you may find useful for product applications.

- [Western Blot](#)
- [Blocking Peptides](#)
- [Dot Blot](#)
- [Immunohistochemistry](#)
- [Immunofluorescence](#)
- [Immunoprecipitation](#)
- [Flow Cytometry](#)
- [Cell Culture](#)

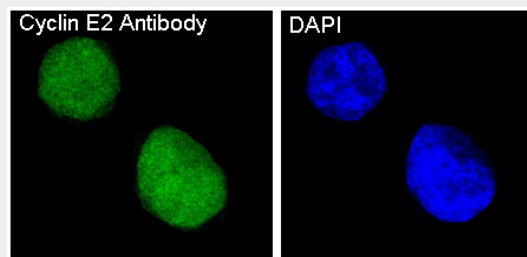
Anti-Cyclin E2 CCNE2 Rabbit Monoclonal Antibody - Images



Western blot analysis of Cyclin E2 expression in HeLa cell lysate.



Immunohistochemical analysis of paraffin-embedded human breast carcinoma, using Cyclin E2 Antibody.



Immunofluorescent analysis of HeLa cells, using Cyclin E2 Antibody.