

Anti-Musashi 1 MSI1 Rabbit Monoclonal Antibody
Catalog # ABO13960**Specification****Anti-Musashi 1 MSI1 Rabbit Monoclonal Antibody - Product Information**

Application	WB, IHC, IF, ICC, IP, FC
Primary Accession	O43347
Host	Rabbit
Isotype	Rabbit IgG
Reactivity	Human
Clonality	Monoclonal
Format	Liquid

Description

Anti-Musashi 1 MSI1 Rabbit Monoclonal Antibody . Tested in WB, IHC, ICC/IF, IP, Flow Cytometry applications. This antibody reacts with Human.

Anti-Musashi 1 MSI1 Rabbit Monoclonal Antibody - Additional Information

Gene ID 4440

Other Names

RNA-binding protein Musashi homolog 1, Musashi-1, MSI1

Calculated MW

39125 MW KDa

Application Details

WB 1:1000-1:2000
IHC 1:50-1:200
ICC/IF 1:50-1:200
IP 1:50
FC 1:50

Subcellular Localization

Cytoplasm. Nucleus.

Tissue Specificity

Detected in fetal kidney, brain, liver and lung, and in adult brain and pancreas. Detected in hepatoma cell lines..

Contents

Rabbit IgG in phosphate buffered saline, pH 7.4, 150mM NaCl, 0.02% sodium azide and 50% glycerol, 0.4-0.5mg/ml BSA.

Immunogen

A synthesized peptide derived from human Musashi 1 / Msi1

Purification

Affinity-chromatography

Storage

Store at -20°C for one year. For short term storage and frequent use, store at 4°C for up to one month. Avoid repeated

freeze-thaw cycles.

Anti-Musashi 1 MSI1 Rabbit Monoclonal Antibody - Protein Information

Name MSI1

Function

RNA binding protein that regulates the expression of target mRNAs at the translation level. Regulates expression of the NOTCH1 antagonist NUMB. Binds RNA containing the sequence 5'-GUUAGUUAGUUAGUU- 3' and other sequences containing the pattern 5'-[GA]U(1-3)AGU-3'. May play a role in the proliferation and maintenance of stem cells in the central nervous system (By similarity).

Cellular Location

Cytoplasm {ECO:0000250|UniProtKB:Q61474}. Nucleus {ECO:0000250|UniProtKB:Q61474}

Tissue Location

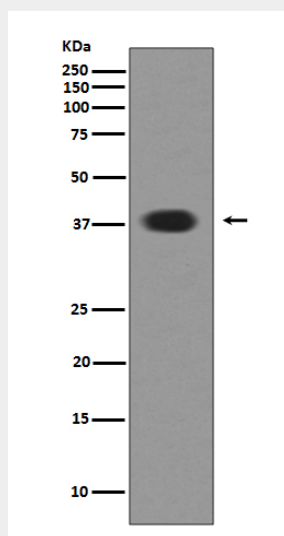
Detected in fetal kidney, brain, liver and lung, and in adult brain and pancreas. Detected in hepatoma cell lines

Anti-Musashi 1 MSI1 Rabbit Monoclonal Antibody - Protocols

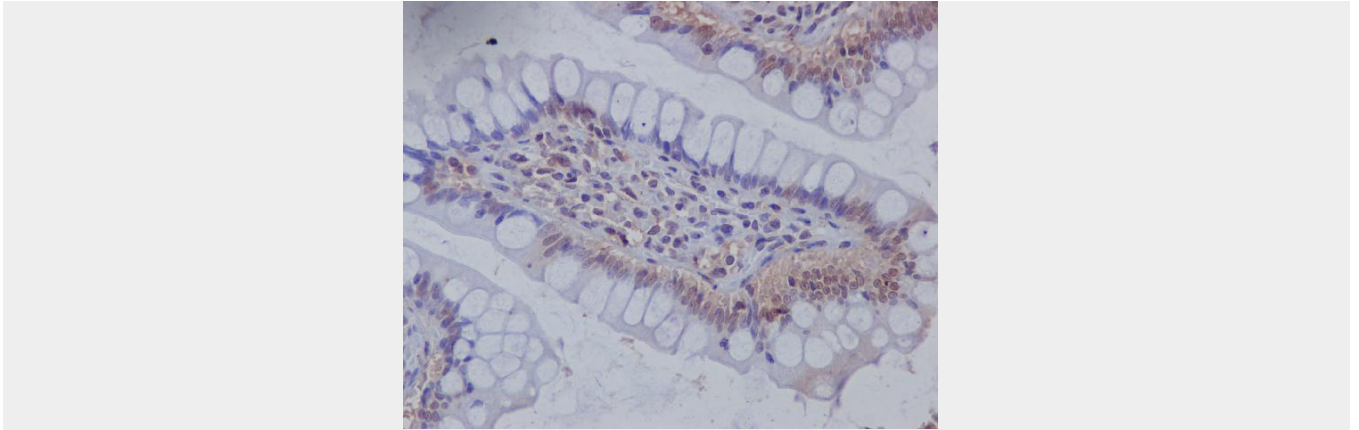
Provided below are standard protocols that you may find useful for product applications.

- [Western Blot](#)
- [Blocking Peptides](#)
- [Dot Blot](#)
- [Immunohistochemistry](#)
- [Immunofluorescence](#)
- [Immunoprecipitation](#)
- [Flow Cytometry](#)
- [Cell Culture](#)

Anti-Musashi 1 MSI1 Rabbit Monoclonal Antibody - Images



Western blot analysis of Musashi 1 expression in SH-SY-5Y cell lysate.



Immunohistochemical analysis of paraffin-embedded human colon, using Musashi 1 Antibody.