

Anti-Catalase Rabbit Monoclonal Antibody
Catalog # ABO13944**Specification**

Anti-Catalase Rabbit Monoclonal Antibody - Product Information

Application	WB, IHC
Primary Accession	P04040
Host	Rabbit
Isotype	Rabbit IgG
Reactivity	Rat, Human, Mouse
Clonality	Monoclonal
Format	Liquid

Description

Anti-Catalase Rabbit Monoclonal Antibody . Tested in WB, IHC applications. This antibody reacts with Human, Mouse, Rat.

Anti-Catalase Rabbit Monoclonal Antibody - Additional Information

Gene ID 847

Other Names

Catalase, 1.11.1.6, CAT

Calculated MW

59756 MW KDa

Application Details

WB 1:500-1:1000
IHC 1:50-1:200

Subcellular Localization

Peroxisome.

Contents

Rabbit IgG in phosphate buffered saline, pH 7.4, 150mM NaCl, 0.02% sodium azide and 50% glycerol, 0.4-0.5mg/ml BSA.

Immunogen

A synthesized peptide derived from human Catalase

Purification

Affinity-chromatography

Storage

Store at -20°C for one year. For short term storage and frequent use, store at 4°C for up to one month. Avoid repeated freeze-thaw cycles.

Anti-Catalase Rabbit Monoclonal Antibody - Protein Information

Name CAT

Function

Catalyzes the degradation of hydrogen peroxide (H₂O₂) generated by peroxisomal oxidases to water and oxygen, thereby protecting cells from the toxic effects of hydrogen peroxide (PubMed:7882369). Promotes growth of cells including T-cells, B-cells, myeloid leukemia cells, melanoma cells, mastocytoma cells and normal and transformed fibroblast cells (PubMed:7882369).

Cellular Location

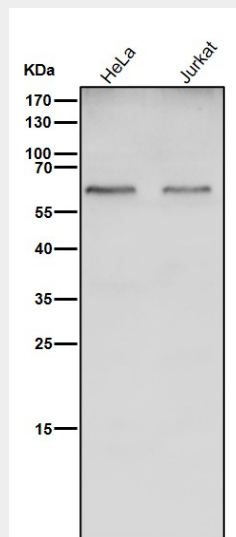
Peroxisome matrix

Anti-Catalase Rabbit Monoclonal Antibody - Protocols

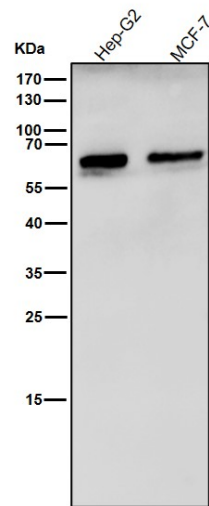
Provided below are standard protocols that you may find useful for product applications.

- [Western Blot](#)
- [Blocking Peptides](#)
- [Dot Blot](#)
- [Immunohistochemistry](#)
- [Immunofluorescence](#)
- [Immunoprecipitation](#)
- [Flow Cytometry](#)
- [Cell Culture](#)

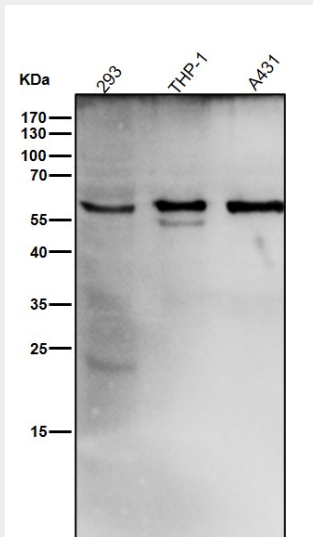
Anti-Catalase Rabbit Monoclonal Antibody - Images



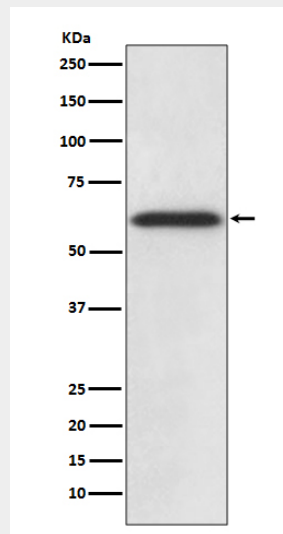
All lanes use the Antibody at 1:3K dilution for 1 hour at room temperature.



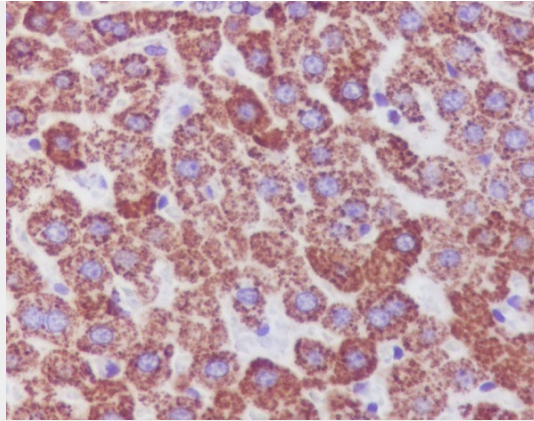
All lanes use the Antibody at 1:3K dilution for 1 hour at room temperature.



All lanes use the Antibody at 1:3K dilution for 1 hour at room temperature.



Western blot analysis of Catalase expression in HepG2 cell lysate.



Immunohistochemical analysis of paraffin-embedded rat liver, using Catalase Antibody.