

**Anti-SERPINA1/Alpha 1 Antitrypsin Rabbit Monoclonal Antibody**  
Catalog # ABO13943**Specification****Anti-SERPINA1/Alpha 1 Antitrypsin Rabbit Monoclonal Antibody - Product Information**

Application	WB, IHC, IF, ICC, IP
Primary Accession	<a href="#">P01009</a>
Host	Rabbit
Isotype	Rabbit IgG
Reactivity	Human
Clonality	Monoclonal
Format	Liquid

**Description**

Anti-SERPINA1/Alpha 1 Antitrypsin Rabbit Monoclonal Antibody . Tested in WB, IHC, ICC/IF, IP applications. This antibody reacts with Human.

**Anti-SERPINA1/Alpha 1 Antitrypsin Rabbit Monoclonal Antibody - Additional Information**

**Gene ID** 5265

**Other Names**

Alpha-1-antitrypsin, Alpha-1 protease inhibitor, Alpha-1-antiproteinase, Serpin A1, Short peptide from AAT, SPAAT, SERPINA1 ([http://www.genenames.org/cgi-bin/gene\\_symbol\\_report?hgnc\\_id=8941](http://www.genenames.org/cgi-bin/gene_symbol_report?hgnc_id=8941)), AAT, PI

**Calculated MW**

46737 MW KDa

**Application Details**

WB 1:500-1:2000<br>IHC 1:50-1:200<br>ICC/IF 1:50-1:200<br>IP 1:30

**Subcellular Localization**

Secreted. Endoplasmic reticulum. The S and Z allele are not secreted effectively and accumulate intracellularly in the endoplasmic reticulum.

**Tissue Specificity**

Ubiquitous. Expressed in leukocytes and plasma..

**Contents**

Rabbit IgG in phosphate buffered saline, pH 7.4, 150mM NaCl, 0.02% sodium azide and 50% glycerol, 0.4-0.5mg/ml BSA.

**Immunogen**

A synthesized peptide derived from human SERPINA1

**Purification**

Affinity-chromatography

**Storage**

Store at -20°C for one year. For short term storage and frequent use, store at 4°C for up to one month. Avoid repeated freeze-thaw cycles.

**Anti-SERPINA1/Alpha 1 Antitrypsin Rabbit Monoclonal Antibody - Protein Information**

**Name** SERPINA1 ([HGNC:8941](#))

**Synonyms** AAT, PI

**Function**

Inhibitor of serine proteases. Its primary target is elastase, but it also has a moderate affinity for plasmin and thrombin. Irreversibly inhibits trypsin, chymotrypsin and plasminogen activator. The aberrant form inhibits insulin-induced NO synthesis in platelets, decreases coagulation time and has proteolytic activity against insulin and plasmin.

**Cellular Location**

Secreted. Endoplasmic reticulum. Note=The S and Z allele are not secreted effectively and accumulate intracellularly in the endoplasmic reticulum

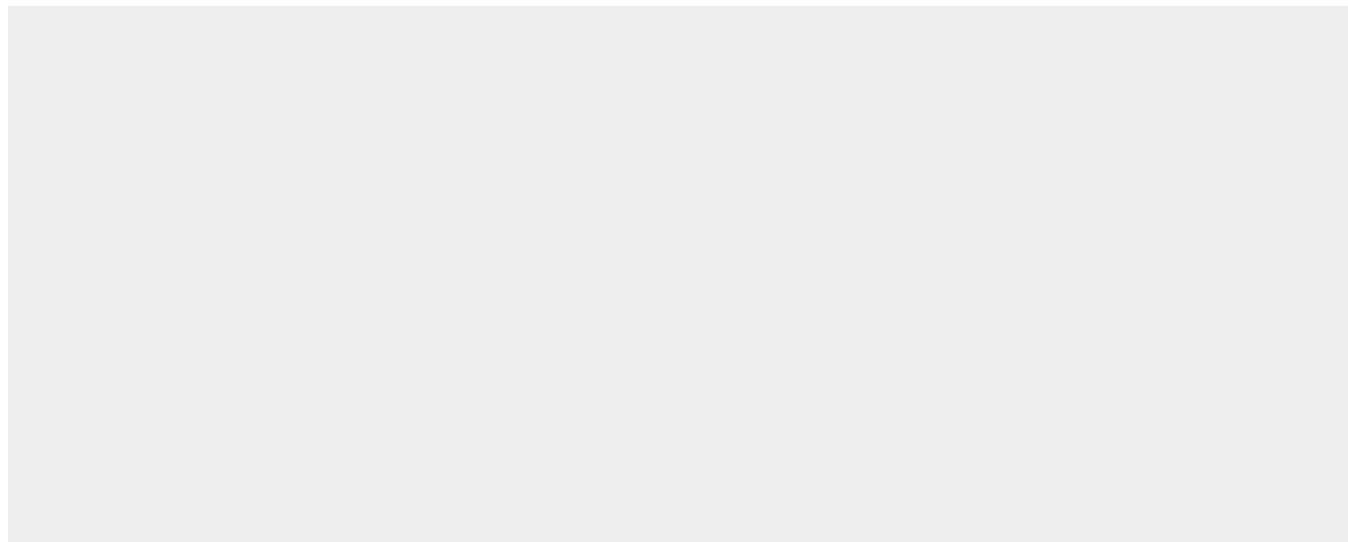
**Tissue Location**

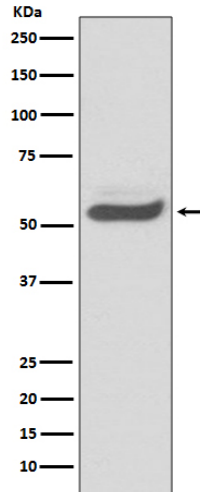
Ubiquitous. Expressed in leukocytes and plasma.

**Anti-SERPINA1/Alpha 1 Antitrypsin Rabbit Monoclonal Antibody - Protocols**

Provided below are standard protocols that you may find useful for product applications.

- [Western Blot](#)
- [Blocking Peptides](#)
- [Dot Blot](#)
- [Immunohistochemistry](#)
- [Immunofluorescence](#)
- [Immunoprecipitation](#)
- [Flow Cytometry](#)
- [Cell Culture](#)

**Anti-SERPINA1/Alpha 1 Antitrypsin Rabbit Monoclonal Antibody - Images**



Western blot analysis of SERPINA1 expression in human fetal kidney lysate.