

**Anti-IKB beta Rabbit Monoclonal Antibody**  
Catalog # ABO13929**Specification****Anti-IKB beta Rabbit Monoclonal Antibody - Product Information**

Application	WB, IHC, IF, ICC, IP
Primary Accession	<a href="#">Q15653</a>
Host	Rabbit
Isotype	Rabbit IgG
Reactivity	Human
Clonality	Monoclonal
Format	Liquid

**Description**

Anti-IKB beta Rabbit Monoclonal Antibody . Tested in WB, IHC, ICC/IF, IP applications. This antibody reacts with Human.

**Anti-IKB beta Rabbit Monoclonal Antibody - Additional Information**

**Gene ID** 4793

**Other Names**

NF-kappa-B inhibitor beta, NF-kappa-BIB, I-kappa-B-beta, Ikb-B, Ikb-beta, IkappaBbeta, Thyroid receptor-interacting protein 9, TR-interacting protein 9, TRIP-9, NFKBIB, IKBB, TRIP9

**Calculated MW**

37771 MW KDa

**Application Details**

WB 1:500-1:2000<br>IHC 1:50-1:200<br>ICC/IF 1:50-1:200<br>IP 1:50

**Subcellular Localization**

Cytoplasm. Nucleus.

**Tissue Specificity**

Expressed in all tissues examined.

**Contents**

Rabbit IgG in phosphate buffered saline, pH 7.4, 150mM NaCl, 0.02% sodium azide and 50% glycerol, 0.4-0.5mg/ml BSA.

**Immunogen**

A synthesized peptide derived from human IKB beta

**Purification**

Affinity-chromatography

**Storage**

**Store at -20°C for one year. For short term storage and frequent use, store at 4°C for up to one month. Avoid repeated**

freeze-thaw cycles.

## Anti-IKB beta Rabbit Monoclonal Antibody - Protein Information

**Name** NFKBIB

**Synonyms** IKBB, TRIP9

### Function

Inhibits NF-kappa-B by complexing with and trapping it in the cytoplasm. However, the unphosphorylated form resynthesized after cell stimulation is able to bind NF-kappa-B allowing its transport to the nucleus and protecting it to further NFKBIA-dependent inactivation. Association with inhibitor kappa B-interacting NKIRAS1 and NKIRAS2 prevent its phosphorylation rendering it more resistant to degradation, explaining its slower degradation.

### Cellular Location

Cytoplasm. Nucleus.

### Tissue Location

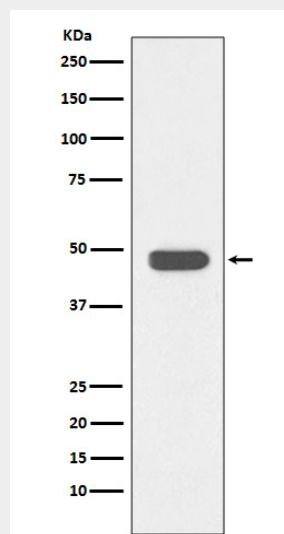
Expressed in all tissues examined.

## Anti-IKB beta Rabbit Monoclonal Antibody - Protocols

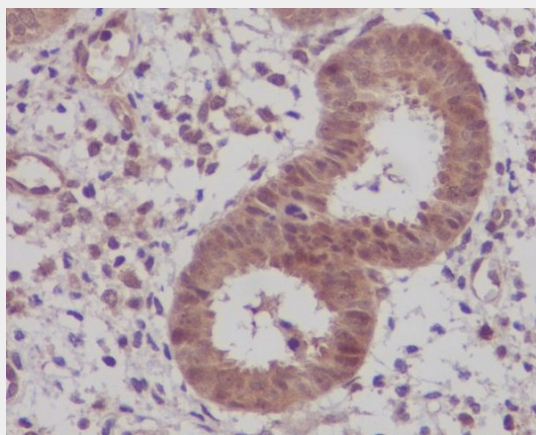
Provided below are standard protocols that you may find useful for product applications.

- [Western Blot](#)
- [Blocking Peptides](#)
- [Dot Blot](#)
- [Immunohistochemistry](#)
- [Immunofluorescence](#)
- [Immunoprecipitation](#)
- [Flow Cytometry](#)
- [Cell Culture](#)

## Anti-IKB beta Rabbit Monoclonal Antibody - Images



Western blot analysis of IKB beta expression in Jurkat cell lysate.



Immunohistochemical analysis of paraffin-embedded human uterus, using IKB beta Antibody.