

**Anti-Paxillin PXN Rabbit Monoclonal Antibody**  
Catalog # ABO13917**Specification****Anti-Paxillin PXN Rabbit Monoclonal Antibody - Product Information**

Application	WB, IHC, IF, ICC, IP
Primary Accession	<a href="#">P49023</a>
Host	Rabbit
Isotype	Rabbit IgG
Reactivity	Rat, Human, Mouse
Clonality	Monoclonal
Format	Liquid

**Description**

Anti-Paxillin PXN Rabbit Monoclonal Antibody . Tested in WB, IHC, ICC/IF, IP applications. This antibody reacts with Human, Mouse, Rat.

**Anti-Paxillin PXN Rabbit Monoclonal Antibody - Additional Information**

**Gene ID** 5829

**Other Names**

Paxillin, PXN

**Calculated MW**

64505 MW KDa

**Application Details**

WB 1:500-1:1000<br>IHC 1:50-1:100<br>ICC/IF 1:50-1:100<br>IP 1:50

**Subcellular Localization**

Cytoplasm, cytoskeleton. Cell junction, focal adhesion. Cytoplasm, cell cortex. Colocalizes with integrins at the cell periphery..

**Contents**

Rabbit IgG in phosphate buffered saline, pH 7.4, 150mM NaCl, 0.02% sodium azide and 50% glycerol, 0.4-0.5mg/ml BSA.

**Immunogen**

A synthesized peptide derived from human Paxillin

**Purification**

Affinity-chromatography

**Storage**

**Store at -20°C for one year. For short term storage and frequent use, store at 4°C for up to one month. Avoid repeated freeze-thaw cycles.**

**Anti-Paxillin PXN Rabbit Monoclonal Antibody - Protein Information**

## Name PXN

### Function

Cytoskeletal protein involved in actin-membrane attachment at sites of cell adhesion to the extracellular matrix (focal adhesion). Recruits other proteins such as TRIM15 to focal adhesion.

### Cellular Location

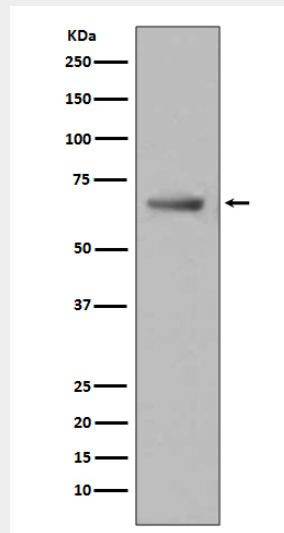
Cytoplasm, cytoskeleton. Cell junction, focal adhesion. Cytoplasm, cell cortex {ECO:0000250|UniProtKB:Q8VI36}. Note=Colocalizes with integrins at the cell periphery. Colocalize with PXN to membrane ruffles and the leading edge of migrating cells (PubMed:23128389). {ECO:0000250, ECO:0000269|PubMed:23128389}

## Anti-Paxillin PXN Rabbit Monoclonal Antibody - Protocols

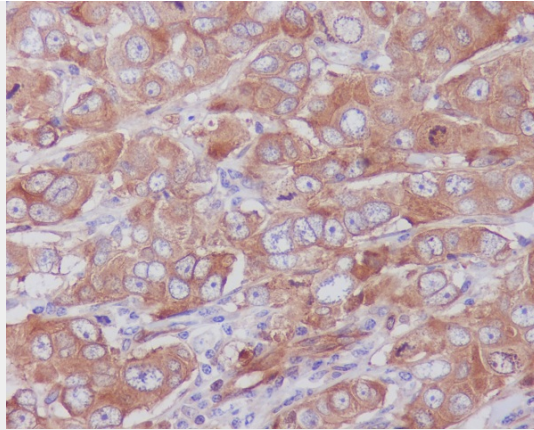
Provided below are standard protocols that you may find useful for product applications.

- [Western Blot](#)
- [Blocking Peptides](#)
- [Dot Blot](#)
- [Immunohistochemistry](#)
- [Immunofluorescence](#)
- [Immunoprecipitation](#)
- [Flow Cytometry](#)
- [Cell Culture](#)

## Anti-Paxillin PXN Rabbit Monoclonal Antibody - Images



Western blot analysis of Paxillin expression in HeLa cell lysate.



Immunohistochemical analysis of paraffin-embedded human breast carcinoma, using Paxillin Antibody.