

Anti-Atg16L1/Atg16 Rabbit Monoclonal Antibody Catalog # ABO13907

Specification

Anti-Atg16L1/Atg16 Rabbit Monoclonal Antibody - Product Information

Application	WB, IHC
Primary Accession	Q676U5
Host	Rabbit
Isotype	Rabbit IgG
Reactivity	Rat, Human, Mouse
Clonality	Monoclonal
Format	Liquid

Description

Anti-Atg16L1/Atg16 Rabbit Monoclonal Antibody . Tested in WB, IHC applications. This antibody reacts with Human, Mouse, Rat.

Anti-Atg16L1/Atg16 Rabbit Monoclonal Antibody - Additional Information

Gene ID 55054

Other Names

Autophagy-related protein 16-1, APG16-like 1, ATG16L1 {ECO:0000303|PubMed:17200669, ECO:0000312|HGNC:HGNC:21498}

Calculated MW

68265 MW KDa

Application Details

WB 1:500-1:2000
IHC 1:50-1:200

Subcellular Localization

Cytoplasm. Preautophagosomal structure membrane ; Peripheral membrane protein. Recruited to omegasomes membranes by WIPI2. Omegasomes are endoplasmic reticulum connected strutures at the origin of preautophagosomal structures. Localized to preautophagosomal structure (PAS) where it is involved in the membrane targeting of ATG5. Localizes also to discrete punctae along the ciliary axoneme..

Contents

Rabbit IgG in phosphate buffered saline, pH 7.4, 150mM NaCl, 0.02% sodium azide and 50% glycerol, 0.4-0.5mg/ml BSA.

Immunogen

A synthesized peptide derived from human Atg16L1

Purification

Affinity-chromatography

Storage

Store at -20°C for one year. For short term storage and frequent use, store at 4°C for

up to one month. Avoid repeated
freeze-thaw cycles.

Anti-Atg16L1/Atg16 Rabbit Monoclonal Antibody - Protein Information

Name ATG16L1 {ECO:0000303|PubMed:17200669, ECO:0000312|HGNC:HGNC:21498}

Function

Plays an essential role in both canonical and non-canonical autophagy: interacts with ATG12-ATG5 to mediate the lipidation to ATG8 family proteins (MAP1LC3A, MAP1LC3B, MAP1LC3C, GABARAPL1, GABARAPL2 and GABARAP) (PubMed: 23376921, PubMed: 23392225, PubMed: 24553140, PubMed: 24954904, PubMed: 27273576, PubMed: 29317426, PubMed: 30778222, PubMed: 33909989). Acts as a molecular hub, coordinating autophagy pathways via distinct domains that support either canonical or non- canonical signaling (PubMed: 29317426, PubMed: 30778222). During canonical autophagy, interacts with ATG12-ATG5 to mediate the conjugation of phosphatidylethanolamine (PE) to ATG8 proteins, to produce a membrane-bound activated form of ATG8 (PubMed: 23376921, PubMed: 23392225, PubMed: 24553140, PubMed: 24954904, PubMed: 27273576). Thereby, controls the elongation of the nascent autophagosomal membrane (PubMed: 23376921, PubMed: 23392225, PubMed: 24553140, PubMed: 24954904, PubMed: 27273576). As part of the ATG8 conjugation system with ATG5 and ATG12, required for recruitment of LRRK2 to stressed lysosomes and induction of LRRK2 kinase activity in response to lysosomal stress (By similarity). Also involved in non-canonical autophagy, a parallel pathway involving conjugation of ATG8 proteins to single membranes at endolysosomal compartments, probably by catalyzing conjugation of phosphatidylserine (PS) to ATG8 (PubMed: 33909989). Non-canonical autophagy plays a key role in epithelial cells to limit lethal infection by influenza A (IAV) virus (By similarity). Regulates mitochondrial antiviral signaling (MAVS)-dependent type I interferon (IFN-I) production (PubMed: 22749352, PubMed: 25645662). Negatively regulates NOD1- and NOD2-driven inflammatory cytokine response (PubMed: 24238340). Instead, promotes an autophagy-dependent antibacterial pathway together with NOD1 or NOD2 (PubMed: 20637199). Plays a role in regulating morphology and function of Paneth cell (PubMed: 18849966).

Cellular Location

Cytoplasm. Preautophagosomal structure membrane; Peripheral membrane protein. Endosome membrane; Peripheral membrane protein. Lysosome membrane; Peripheral membrane protein.

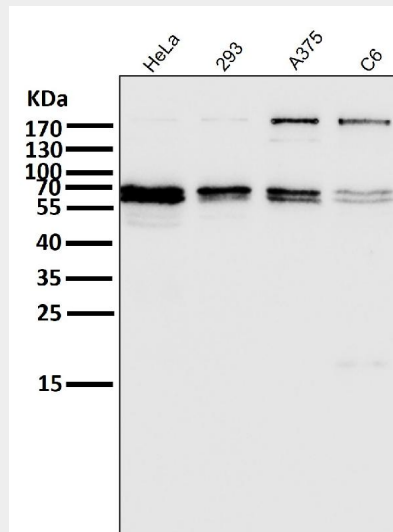
Note=Recruited to omegasomes membranes by WIPI2 (By similarity). Omegasomes are endoplasmic reticulum connected structures at the origin of preautophagosomal structures (By similarity) Localized to preautophagosomal structure (PAS) where it is involved in the membrane targeting of ATG5 (By similarity). Localizes also to discrete punctae along the ciliary axoneme (By similarity). Upon activation of non-canonical autophagy, recruited to single-membrane endolysosomal compartments (PubMed:29317426) {ECO:0000250|UniProtKB:Q8C0J2, ECO:0000269|PubMed:29317426}

Anti-Atg16L1/Atg16 Rabbit Monoclonal Antibody - Protocols

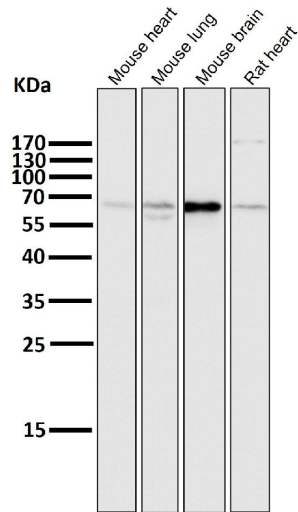
Provided below are standard protocols that you may find useful for product applications.

- [Western Blot](#)
- [Blocking Peptides](#)
- [Dot Blot](#)
- [Immunohistochemistry](#)
- [Immunofluorescence](#)
- [Immunoprecipitation](#)
- [Flow Cytometry](#)
- [Cell Culture](#)

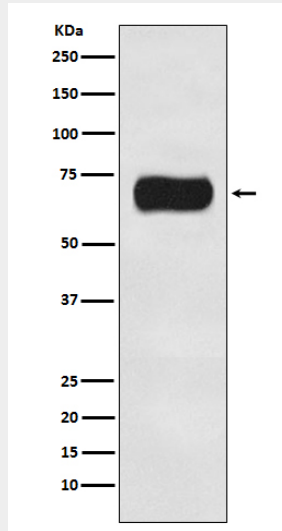
Anti-Atg16L1/Atg16 Rabbit Monoclonal Antibody - Images



All lanes use the Antibody at 1:5K dilution for 1 hour at room temperature.



All lanes use the Antibody at 1:5K dilution for 1 hour at room temperature.



Western blot analysis of Atg16L1 expression in HeLa cell lysate.