

**Anti-ADIPOR1 Rabbit Monoclonal Antibody**  
Catalog # ABO13898**Specification****Anti-ADIPOR1 Rabbit Monoclonal Antibody - Product Information**

Application	WB, IHC, IF, ICC, FC
Primary Accession	<a href="#">Q96A54</a>
Host	Rabbit
Isotype	Rabbit IgG
Reactivity	Rat, Human, Mouse
Clonality	Monoclonal
Format	Liquid

**Description**

Anti-ADIPOR1 Rabbit Monoclonal Antibody . Tested in WB, IHC, ICC/IF, Flow Cytometry applications. This antibody reacts with Human, Mouse, Rat.

**Anti-ADIPOR1 Rabbit Monoclonal Antibody - Additional Information**

**Gene ID** 51094

**Other Names**

Adiponectin receptor protein 1, Progestin and adipoQ receptor family member 1, Progestin and adipoQ receptor family member I, ADIPOR1 ([HGNC:24040](http://www.genenames.org/cgi-bin/gene_symbol_report?hgnc_id=24040))

**Calculated MW**

42616 MW KDa

**Application Details**

WB 1:500-1:2000<br>IHC 1:50-1:200<br>ICC/IF 1:50-1:200<br>FC 1:50

**Subcellular Localization**

Cell membrane ; Multi-pass membrane protein. Localized to the cell membrane and intracellular organelles..

**Tissue Specificity**

Widely expressed (PubMed:16044242). Highly expressed in heart and skeletal muscle (PubMed:12802337). Expressed at intermediate level in brain, spleen, kidney, liver, placenta, lung and peripheral blood leukocytes (PubMed:12802337). Weakly expressed in colon, thymus and small intestine (PubMed:12802337)..

**Contents**

Rabbit IgG in phosphate buffered saline, pH 7.4, 150mM NaCl, 0.02% sodium azide and 50% glycerol, 0.4-0.5mg/ml BSA.

**Immunogen**

A synthesized peptide derived from human ADIPOR1

### Purification

Affinity-chromatography

### Storage

**Store at -20°C for one year. For short term storage and frequent use, store at 4°C for up to one month. Avoid repeated freeze-thaw cycles.**

## Anti-ADIPOR1 Rabbit Monoclonal Antibody - Protein Information

**Name** ADIPOR1 ([HGNC:24040](#))

### Function

Receptor for ADIPOQ, an essential hormone secreted by adipocytes that regulates glucose and lipid metabolism (PubMed:[12802337](http://www.uniprot.org/citations/12802337), PubMed:[25855295](http://www.uniprot.org/citations/25855295)). Required for normal glucose and fat homeostasis and for maintaining a normal body weight. ADIPOQ-binding activates a signaling cascade that leads to increased AMPK activity, and ultimately to increased fatty acid oxidation, increased glucose uptake and decreased gluconeogenesis. Has high affinity for globular adiponectin and low affinity for full-length adiponectin (By similarity).

### Cellular Location

Cell membrane; Multi-pass membrane protein Note=Localized to the cell membrane and intracellular organelles

### Tissue Location

Widely expressed (PubMed:16044242). Highly expressed in heart and skeletal muscle (PubMed:12802337). Expressed at intermediate level in brain, spleen, kidney, liver, placenta, lung and peripheral blood leukocytes (PubMed:12802337). Weakly expressed in colon, thymus and small intestine (PubMed:12802337)

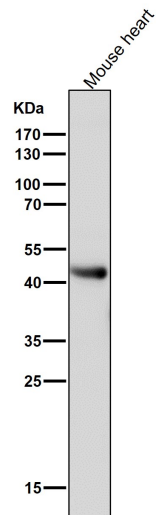
## Anti-ADIPOR1 Rabbit Monoclonal Antibody - Protocols

Provided below are standard protocols that you may find useful for product applications.

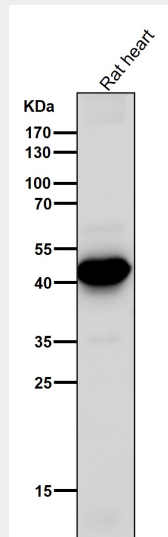
- [Western Blot](#)
- [Blocking Peptides](#)
- [Dot Blot](#)
- [Immunohistochemistry](#)
- [Immunofluorescence](#)
- [Immunoprecipitation](#)
- [Flow Cytometry](#)
- [Cell Culture](#)

## Anti-ADIPOR1 Rabbit Monoclonal Antibody - Images

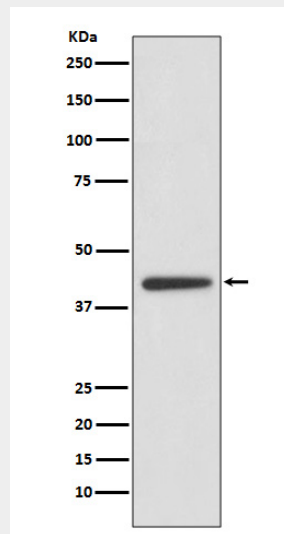




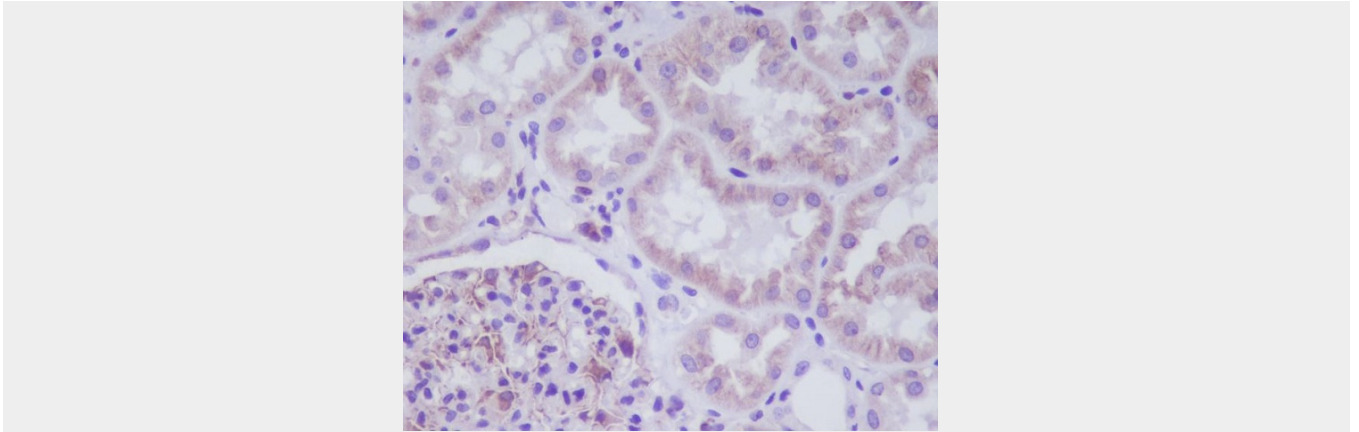
All lanes use the Antibody at 1:1K dilution for 1 hour at room temperature.



All lanes use the Antibody at 1:1K dilution for 1 hour at room temperature.



Western blot analysis of ADIPOR1 expression in Human heart lysate.



Immunohistochemical analysis of paraffin-embedded human kidney, using ADIPOR1 Antibody.