

Anti-DNAJC15 Rabbit Monoclonal Antibody
Catalog # ABO13887**Specification****Anti-DNAJC15 Rabbit Monoclonal Antibody - Product Information**

Application	WB, IHC
Primary Accession	Q9Y5T4
Host	Rabbit
Isotype	Rabbit IgG
Reactivity	Rat, Human, Mouse
Clonality	Monoclonal
Format	Liquid

Description

Anti-DNAJC15 Rabbit Monoclonal Antibody . Tested in WB, IHC applications. This antibody reacts with Human, Mouse, Rat.

Anti-DNAJC15 Rabbit Monoclonal Antibody - Additional Information

Gene ID 29103

Other Names

Dnaj homolog subfamily C member 15, Cell growth-inhibiting gene 22 protein, Methylation-controlled J protein, MCJ, DNAJC15, DNAJD1

Calculated MW

16383 MW KDa

Application Details

WB 1:500-1:2000
IHC 1:50-1:200

Subcellular Localization

Mitochondrion inner membrane ; Single-pass membrane protein.

Tissue Specificity

Expressed at highest levels in heart, followed by liver and kidney..

Contents

Rabbit IgG in phosphate buffered saline, pH 7.4, 150mM NaCl, 0.02% sodium azide and 50% glycerol, 0.4-0.5mg/ml BSA.

Immunogen

A synthesized peptide derived from human DNAJC15

Purification

Affinity-chromatography

Storage

Store at -20°C for one year. For short term storage and frequent use, store at 4°C for up to one month. Avoid repeated

freeze-thaw cycles.

Anti-DNAJC15 Rabbit Monoclonal Antibody - Protein Information

Name DNAJC15

Synonyms DNAJD1

Function

Negative regulator of the mitochondrial respiratory chain. Prevents mitochondrial hyperpolarization state and restricts mitochondrial generation of ATP (By similarity). Acts as an import component of the TIM23 translocase complex. Stimulates the ATPase activity of HSPA9.

Cellular Location

Mitochondrion inner membrane; Single-pass membrane protein

Tissue Location

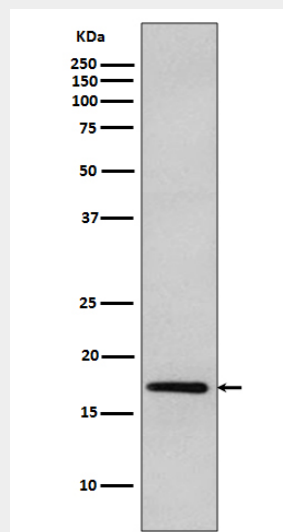
Expressed at highest levels in heart, followed by liver and kidney.

Anti-DNAJC15 Rabbit Monoclonal Antibody - Protocols

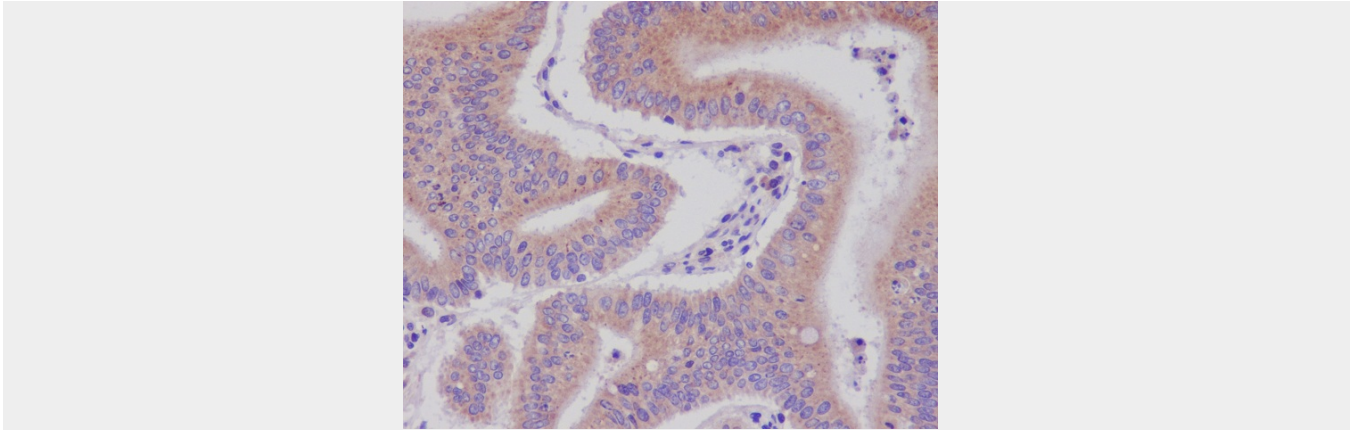
Provided below are standard protocols that you may find useful for product applications.

- [Western Blot](#)
- [Blocking Peptides](#)
- [Dot Blot](#)
- [Immunohistochemistry](#)
- [Immunofluorescence](#)
- [Immunoprecipitation](#)
- [Flow Cytometry](#)
- [Cell Culture](#)

Anti-DNAJC15 Rabbit Monoclonal Antibody - Images



Western blot analysis of DNAJC15 expression in MCF-7 cell lysate.



Immunohistochemical analysis of paraffin-embedded human colon carcinoma, using DNAJC15 Antibody.