

**Anti-FKBP12 Rabbit Monoclonal Antibody**  
Catalog # ABO13872**Specification****Anti-FKBP12 Rabbit Monoclonal Antibody - Product Information**

Application	WB, IF, ICC
Primary Accession	<a href="#">P62942</a>
Host	Rabbit
Isotype	Rabbit IgG
Reactivity	Rat, Human, Mouse
Clonality	Monoclonal
Format	Liquid

**Description**

Anti-FKBP12 Rabbit Monoclonal Antibody . Tested in WB, ICC/IF applications. This antibody reacts with Human, Mouse, Rat.

**Anti-FKBP12 Rabbit Monoclonal Antibody - Additional Information**

**Gene ID** 2280

**Other Names**

Peptidyl-prolyl cis-trans isomerase FKBP1A, PPIase FKBP1A, 5.2.1.8, 12 kDa FK506-binding protein, 12 kDa FKBP, FKBP-12, Calstabin-1, FK506-binding protein 1A, FKBP-1A, Immunophilin FKBP12, Rotamase, FKBP1A, FKBP1, FKBP12

**Calculated MW**

11951 MW KDa

**Application Details**

WB 1:1000-1:5000<br>ICC/IF 1:50-1:200

**Subcellular Localization**

Cytoplasm.

**Contents**

Rabbit IgG in phosphate buffered saline, pH 7.4, 150mM NaCl, 0.02% sodium azide and 50% glycerol, 0.4-0.5mg/ml BSA.

**Immunogen**

A synthesized peptide derived from human FKBP12

**Purification**

Affinity-chromatography

**Storage**

**Store at -20°C for one year. For short term storage and frequent use, store at 4°C for up to one month. Avoid repeated freeze-thaw cycles.**

## Anti-FKBP12 Rabbit Monoclonal Antibody - Protein Information

**Name** FKBP1A

**Synonyms** FKBP1, FKBP12

### Function

Keeps in an inactive conformation TGFBR1, the TGF-beta type I serine/threonine kinase receptor, preventing TGF-beta receptor activation in absence of ligand. Recruits SMAD7 to ACVR1B which prevents the association of SMAD2 and SMAD3 with the activin receptor complex, thereby blocking the activin signal. May modulate the RYR1 calcium channel activity. PPlases accelerate the folding of proteins. It catalyzes the cis-trans isomerization of proline imidic peptide bonds in oligopeptides.

### Cellular Location

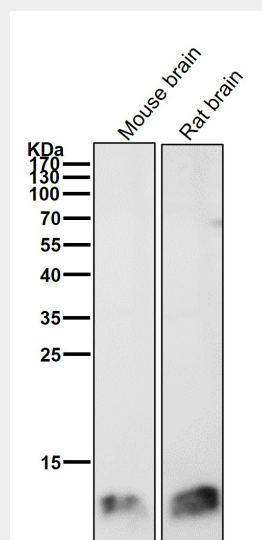
Cytoplasm, cytosol. Sarcoplasmic reticulum membrane {ECO:0000250|UniProtKB:P62943}; Peripheral membrane protein {ECO:0000250|UniProtKB:P62943}; Cytoplasmic side {ECO:0000250|UniProtKB:P62943}

## Anti-FKBP12 Rabbit Monoclonal Antibody - Protocols

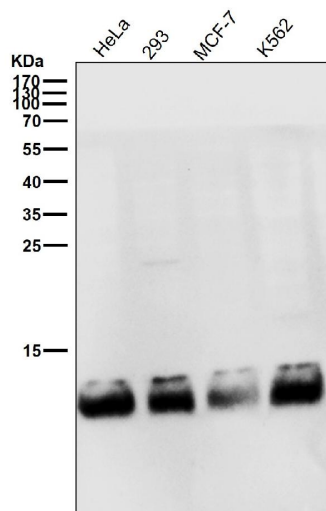
Provided below are standard protocols that you may find useful for product applications.

- [Western Blot](#)
- [Blocking Peptides](#)
- [Dot Blot](#)
- [Immunohistochemistry](#)
- [Immunofluorescence](#)
- [Immunoprecipitation](#)
- [Flow Cytometry](#)
- [Cell Culture](#)

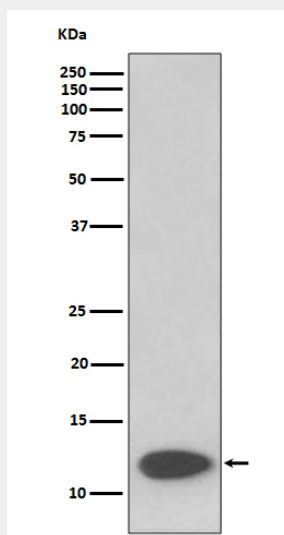
## Anti-FKBP12 Rabbit Monoclonal Antibody - Images



All lanes use the Antibody at 1:2K dilution for 1 hour at room temperature.



All lanes use the Antibody at 1:2K dilution for 1 hour at room temperature.



Western blot analysis of FKBP12 expression in SH-SY5Y cell lysate.