

Anti-CNPase Rabbit Monoclonal Antibody
Catalog # ABO13865**Specification****Anti-CNPase Rabbit Monoclonal Antibody - Product Information**

Application	WB
Primary Accession	P09543
Host	Rabbit
Isotype	Rabbit IgG
Reactivity	Rat, Human, Mouse
Clonality	Monoclonal
Format	Liquid

Description

Anti-CNPase Rabbit Monoclonal Antibody . Tested in WB application. This antibody reacts with Human, Mouse, Rat.

Anti-CNPase Rabbit Monoclonal Antibody - Additional Information

Gene ID 1267

Other Names

2', 3'-cyclic-nucleotide 3'-phosphodiesterase, CNP, CNPase, 3.1.4.37, CNP (http://www.genenames.org/cgi-bin/gene_symbol_report?hgnc_id=2158)>HGNC:2158)

Calculated MW

47579 MW KDa

Application Details

WB 1:500-1:2000

Subcellular Localization

Membrane; Lipid-anchor. Melanosome. Firmly bound to membrane structures of brain white matter. Identified by mass spectrometry in melanosome fractions from stage I to stage IV.

Contents

Rabbit IgG in phosphate buffered saline, pH 7.4, 150mM NaCl, 0.02% sodium azide and 50% glycerol, 0.4-0.5mg/ml BSA.

Immunogen

A synthesized peptide derived from human CNPase

Purification

Affinity-chromatography

Storage

Store at -20°C for one year. For short term storage and frequent use, store at 4°C for up to one month. Avoid repeated freeze-thaw cycles.

Anti-CNPase Rabbit Monoclonal Antibody - Protein Information

Name CNP ([HGNC:2158](#))

Function

Catalyzes the formation of 2'-nucleotide products from 2',3'- cyclic substrates (By similarity). May participate in RNA metabolism in the myelinating cell, CNP is the third most abundant protein in central nervous system myelin (By similarity).

Cellular Location

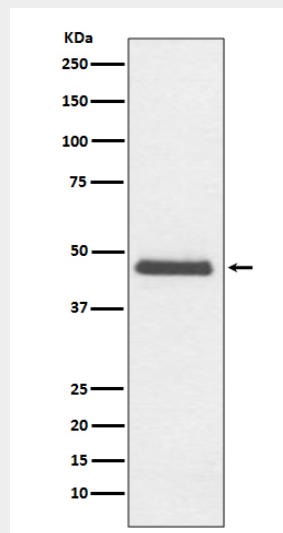
Membrane {ECO:0000250|UniProtKB:P16330}; Lipid- anchor {ECO:0000250|UniProtKB:P16330}. Melanosome. Note=Firmly bound to membrane structures of brain white matter. {ECO:0000250|UniProtKB:P16330}

Anti-CNPase Rabbit Monoclonal Antibody - Protocols

Provided below are standard protocols that you may find useful for product applications.

- [Western Blot](#)
- [Blocking Peptides](#)
- [Dot Blot](#)
- [Immunohistochemistry](#)
- [Immunofluorescence](#)
- [Immunoprecipitation](#)
- [Flow Cytometry](#)
- [Cell Culture](#)

Anti-CNPase Rabbit Monoclonal Antibody - Images



Western blot analysis of CNPase expression in C6 cell lysate.