

Anti-SERCA2 ATP2A2 Rabbit Monoclonal Antibody
Catalog # ABO13864**Specification****Anti-SERCA2 ATP2A2 Rabbit Monoclonal Antibody - Product Information**

Application	WB, IHC, IF, ICC, FC
Primary Accession	P16615
Host	Rabbit
Isotype	Rabbit IgG
Reactivity	Rat, Human, Mouse
Clonality	Monoclonal
Format	Liquid

Description

Anti-SERCA2 ATP2A2 Rabbit Monoclonal Antibody . Tested in WB, IHC, ICC/IF, Flow Cytometry applications. This antibody reacts with Human, Mouse, Rat.

Anti-SERCA2 ATP2A2 Rabbit Monoclonal Antibody - Additional Information

Gene ID 488

Other Names

Sarcoplasmic/endoplasmic reticulum calcium ATPase 2, SERCA2, SR Ca(2+)-ATPase 2, 7.2.2.10, Calcium pump 2, Calcium-transporting ATPase sarcoplasmic reticulum type, slow twitch skeletal muscle isoform, Endoplasmic reticulum class 1/2 Ca(2+) ATPase, ATP2A2 ([HGNC:812](http://www.genenames.org/cgi-bin/gene_symbol_report?hgnc_id=812)), ATP2B

Calculated MW

114757 MW KDa

Application Details

WB 1:500-1:2000
IHC 1:50-1:200
ICC/IF 1:50-1:200
FC 1:50

Subcellular Localization

Endoplasmic reticulum membrane; Multi-pass membrane protein. Sarcoplasmic reticulum membrane; Multi-pass membrane protein.

Tissue Specificity

Isoform 1 is widely expressed in smooth muscle and nonmuscle tissues such as in adult skin epidermis, with highest expression in liver, pancreas and lung, and intermediate expression in brain, kidney and placenta. Also expressed at lower levels in heart and skeletal muscle. Isoforms 2 and 3 are highly expressed in the heart and slow twitch skeletal muscle. Expression of isoform 3 is predominantly restricted to cardiomyocytes and in close proximity to the sarcolemma. Both isoforms are mildly expressed in lung, kidney, liver, pancreas and placenta. Expression of isoform 3 is amplified during monocytic differentiation and also observed in the fetal heart..

Contents

Rabbit IgG in phosphate buffered saline, pH 7.4, 150mM NaCl, 0.02% sodium azide and 50% glycerol, 0.4-0.5mg/ml BSA.

Immunogen

A synthesized peptide derived from human SERCA2

Purification

Affinity-chromatography

Storage

Store at -20°C for one year. For short term storage and frequent use, store at 4°C for up to one month. Avoid repeated freeze-thaw cycles.

Anti-SERCA2 ATP2A2 Rabbit Monoclonal Antibody - Protein Information

Name ATP2A2 ([HGNC:812](#))

Synonyms ATP2B

Function

This magnesium-dependent enzyme catalyzes the hydrolysis of ATP coupled with the translocation of calcium from the cytosol to the sarcoplasmic reticulum lumen (PubMed:12542527, PubMed:16402920). Involved in autophagy in response to starvation. Upon interaction with VMP1 and activation, controls ER-isolation membrane contacts for autophagosome formation (PubMed:28890335). Also modulates ER contacts with lipid droplets, mitochondria and endosomes (PubMed:28890335). In coordination with FLVCR2 mediates heme-stimulated switching from mitochondrial ATP synthesis to thermogenesis (By similarity).

Cellular Location

Endoplasmic reticulum membrane {ECO:0000250|UniProtKB:O55143}; Multi-pass membrane protein. Sarcoplasmic reticulum membrane; Multi-pass membrane protein. Note=Colocalizes with FLVCR2 at the mitochondrial-ER contact junction. {ECO:0000250|UniProtKB:O55143}

Tissue Location

Isoform 1 is widely expressed in smooth muscle and nonmuscle tissues such as in adult skin epidermis, with highest expression in liver, pancreas and lung, and intermediate expression in brain, kidney and placenta. Also expressed at lower levels in heart and skeletal muscle. Isoforms 2 and 3 are highly expressed in the heart and slow twitch skeletal muscle. Expression of isoform 3 is predominantly restricted to cardiomyocytes and in close proximity to the sarcolemma Both isoforms are mildly expressed in lung, kidney, liver, pancreas and placenta. Expression of isoform 3 is amplified during monocytic differentiation and also observed in the fetal heart

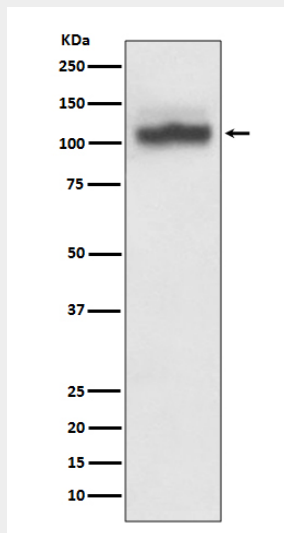
Anti-SERCA2 ATP2A2 Rabbit Monoclonal Antibody - Protocols

Provided below are standard protocols that you may find useful for product applications.

- [Western Blot](#)
- [Blocking Peptides](#)
- [Dot Blot](#)
- [Immunohistochemistry](#)
- [Immunofluorescence](#)
- [Immunoprecipitation](#)

- [Flow Cytometry](#)
- [Cell Culture](#)

Anti-SERCA2 ATP2A2 Rabbit Monoclonal Antibody - Images



Western blot analysis of SERCA2 expression in HeLa cell lysate.