

**Anti-CITED2 Rabbit Monoclonal Antibody**  
Catalog # ABO13858**Specification**

---

**Anti-CITED2 Rabbit Monoclonal Antibody - Product Information**

Application	WB
Primary Accession	<a href="#">Q99967</a>
Host	Rabbit
Isotype	Rabbit IgG
Reactivity	Human, Mouse
Clonality	Monoclonal
Format	Liquid

**Description**

Anti-CITED2 Rabbit Monoclonal Antibody . Tested in WB application. This antibody reacts with Human, Mouse.

**Anti-CITED2 Rabbit Monoclonal Antibody - Additional Information**

**Gene ID** 10370

**Other Names**

Cbp/p300-interacting transactivator 2, MSG-related protein 1, MRG-1, P35srj, CITED2, MRG1

**Calculated MW**

28497 MW KDa

**Application Details**

WB 1:500-1:2000

**Subcellular Localization**

Nucleus. Colocalizes with EP300 in dot-like structures.

**Contents**

Rabbit IgG in phosphate buffered saline, pH 7.4, 150mM NaCl, 0.02% sodium azide and 50% glycerol, 0.4-0.5mg/ml BSA.

**Immunogen**

A synthesized peptide derived from human CITED2

**Purification**

Affinity-chromatography

**Storage**

**Store at -20°C for one year. For short term storage and frequent use, store at 4°C for up to one month. Avoid repeated freeze-thaw cycles.**

**Anti-CITED2 Rabbit Monoclonal Antibody - Protein Information**

**Name** CITED2

**Synonyms** MRG1

**Function**

Transcriptional coactivator of the p300/CBP-mediated transcription complex. Acts as a bridge, linking TFAP2 transcription factors and the p300/CBP transcriptional coactivator complex in order to stimulate TFAP2-mediated transcriptional activation. Positively regulates TGF-beta signaling through its association with the SMAD/p300/CBP-mediated transcriptional coactivator complex. Stimulates the peroxisome proliferator-activated receptors PPARA transcriptional activity. Enhances estrogen-dependent transactivation mediated by estrogen receptors. Acts also as a transcriptional corepressor; interferes with the binding of the transcription factors HIF1A or STAT2 and the p300/CBP transcriptional coactivator complex. Participates in sex determination and early gonad development by stimulating transcription activation of SRY. Plays a role in controlling left-right patterning during embryogenesis; potentiates transcriptional activation of NODAL-mediated gene transcription in the left lateral plate mesoderm (LPM). Plays an essential role in differentiation of the adrenal cortex from the adrenogonadal primordium (AGP); stimulates WT1-mediated transcription activation thereby up-regulating the nuclear hormone receptor NR5A1 promoter activity. Associates with chromatin to the PITX2 P1 promoter region.

**Cellular Location**

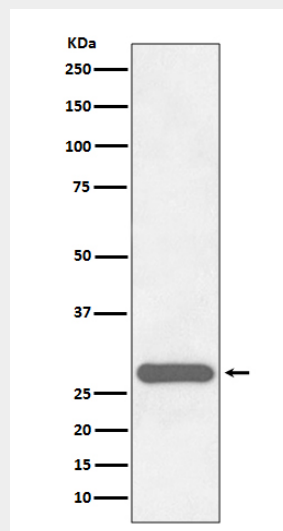
Nucleus Note=Colocalizes with EP300 in dot-like structures

**Anti-CITED2 Rabbit Monoclonal Antibody - Protocols**

Provided below are standard protocols that you may find useful for product applications.

- [Western Blot](#)
- [Blocking Peptides](#)
- [Dot Blot](#)
- [Immunohistochemistry](#)
- [Immunofluorescence](#)
- [Immunoprecipitation](#)
- [Flow Cytometry](#)
- [Cell Culture](#)

**Anti-CITED2 Rabbit Monoclonal Antibody - Images**



Western blot analysis of CITED2 expression in HeLa cell lysate.