

Anti-Cdc25B Rabbit Monoclonal Antibody
Catalog # ABO13854

Specification

Anti-Cdc25B Rabbit Monoclonal Antibody - Product Information

Application	WB, IP
Primary Accession	P30305
Host	Rabbit
Isotype	Rabbit IgG
Reactivity	Human
Clonality	Monoclonal
Format	Liquid

Description

Anti-Cdc25B Rabbit Monoclonal Antibody . Tested in WB, IP applications. This antibody reacts with Human.

Anti-Cdc25B Rabbit Monoclonal Antibody - Additional Information

Gene ID 994

Other Names

M-phase inducer phosphatase 2, 3.1.3.48, Dual specificity phosphatase Cdc25B, CDC25B, CDC25HU2

Calculated MW

64987 MW KDa

Application Details

WB 1:500-1:2000
IP 1:50

Subcellular Localization

Cytoplasm, cytoskeleton, microtubule organizing center, centrosome. Cytoplasm, cytoskeleton, spindle pole.

Contents

Rabbit IgG in phosphate buffered saline, pH 7.4, 150mM NaCl, 0.02% sodium azide and 50% glycerol, 0.4-0.5mg/ml BSA.

Immunogen

A synthesized peptide derived from human Cdc25B

Purification

Affinity-chromatography

Storage

Store at -20°C for one year. For short term storage and frequent use, store at 4°C for up to one month. Avoid repeated freeze-thaw cycles.

Anti-Cdc25B Rabbit Monoclonal Antibody - Protein Information

Name CDC25B

Synonyms CDC25HU2

Function

Tyrosine protein phosphatase which functions as a dosage- dependent inducer of mitotic progression (PubMed:1836978, PubMed:20360007). Directly dephosphorylates CDK1 and stimulates its kinase activity (PubMed:20360007). Required for G2/M phases of the cell cycle progression and abscission during cytokinesis in a ECT2-dependent manner (PubMed:17332740). The three isoforms seem to have a different level of activity (PubMed:1836978).

Cellular Location

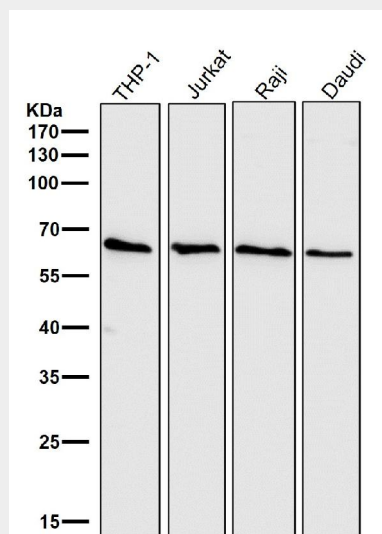
Cytoplasm, cytoskeleton, microtubule organizing center, centrosome. Cytoplasm, cytoskeleton, spindle pole

Anti-Cdc25B Rabbit Monoclonal Antibody - Protocols

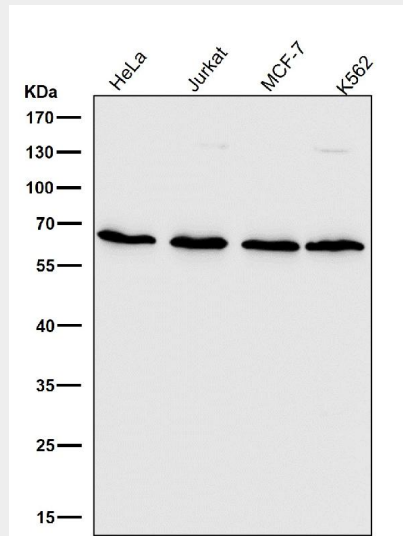
Provided below are standard protocols that you may find useful for product applications.

- [Western Blot](#)
- [Blocking Peptides](#)
- [Dot Blot](#)
- [Immunohistochemistry](#)
- [Immunofluorescence](#)
- [Immunoprecipitation](#)
- [Flow Cytometry](#)
- [Cell Culture](#)

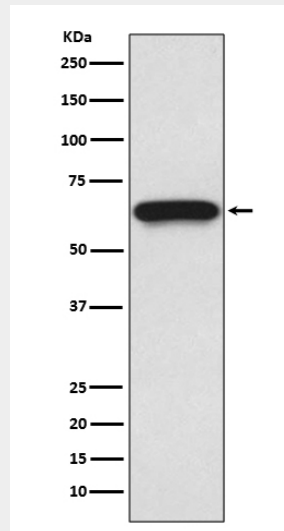
Anti-Cdc25B Rabbit Monoclonal Antibody - Images



All lanes use the Antibody at 1:1K dilution for 1 hour at room temperature.



All lanes use the Antibody at 1:1K dilution for 1 hour at room temperature.



Western blot analysis of Cdc25B expression in U937 cell lysate.