

Anti-STAT5b Rabbit Monoclonal Antibody Catalog # ABO13847

Specification

Anti-STAT5b Rabbit Monoclonal Antibody - Product Information

Application	WB, IHC, IF, ICC, IP
Primary Accession	P51692
Host	Rabbit
Isotype	Rabbit IgG
Reactivity	Rat, Human, Mouse
Clonality	Monoclonal
Format	Liquid

Description

Anti-STAT5b Rabbit Monoclonal Antibody . Tested in WB, IHC, ICC/IF, IP applications. This antibody reacts with Human, Mouse, Rat.

Anti-STAT5b Rabbit Monoclonal Antibody - Additional Information

Gene ID 6777

Other Names

Signal transducer and activator of transcription 5B, STAT5B

Calculated MW

89866 MW KDa

Application Details

WB 1:1000-1:2000
IHC 1:1000-1:2000
ICC/IF 1:1000-1:2000
IP 1:40

Subcellular Localization

Cytoplasm. Nucleus. Translocated into the nucleus in response to phosphorylation..

Contents

Rabbit IgG in phosphate buffered saline, pH 7.4, 150mM NaCl, 0.02% sodium azide and 50% glycerol, 0.4-0.5mg/ml BSA.

Immunogen

A synthesized peptide derived from human STAT5b

Purification

Affinity-chromatography

Storage

Store at -20°C for one year. For short term storage and frequent use, store at 4°C for up to one month. Avoid repeated freeze-thaw cycles.

Anti-STAT5b Rabbit Monoclonal Antibody - Protein Information

Name STAT5B

Function

Carries out a dual function: signal transduction and activation of transcription (PubMed:29844444). Mediates cellular responses to the cytokine KITLG/SCF and other growth factors. Binds to the GAS element and activates PRL-induced transcription. Positively regulates hematopoietic/erythroid differentiation.

Cellular Location

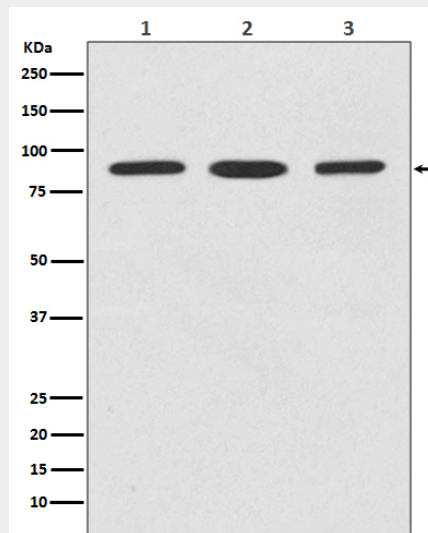
Cytoplasm. Nucleus. Note=Translocated into the nucleus in response to phosphorylation.

Anti-STAT5b Rabbit Monoclonal Antibody - Protocols

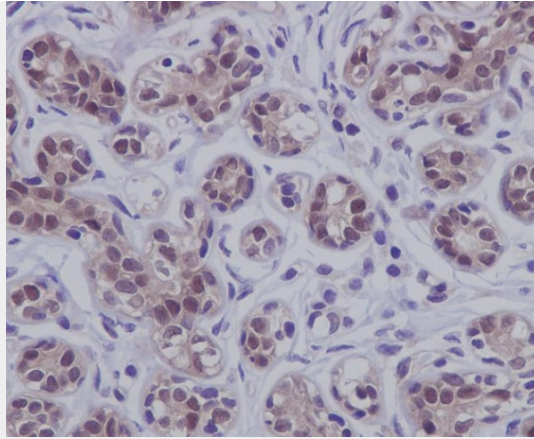
Provided below are standard protocols that you may find useful for product applications.

- [Western Blot](#)
- [Blocking Peptides](#)
- [Dot Blot](#)
- [Immunohistochemistry](#)
- [Immunofluorescence](#)
- [Immunoprecipitation](#)
- [Flow Cytometry](#)
- [Cell Culture](#)

Anti-STAT5b Rabbit Monoclonal Antibody - Images



Western blot analysis of STAT5b expression in (1) HeLa cell lysate; (2) 3T3 cell lysate; (3) C6 cell lysate.



Immunohistochemical analysis of paraffin-embedded human breast, using STAT5b Antibody.