

Anti-Nestin Rabbit Monoclonal Antibody
Catalog # ABO13837**Specification**

Anti-Nestin Rabbit Monoclonal Antibody - Product Information

Application	IHC, IF, ICC
Primary Accession	P48681
Host	Rabbit
Isotype	Rabbit IgG
Reactivity	Human
Clonality	Monoclonal
Format	Liquid

Description

Anti-Nestin Rabbit Monoclonal Antibody . Tested in IHC, ICC/IF applications. This antibody reacts with Human, Rat.

Anti-Nestin Rabbit Monoclonal Antibody - Additional Information

Gene ID 10763

Other Names

Nestin, NES

Calculated MW

177439 MW KDa

Application Details

IHC 1:50-1:200
ICC/IF 1:50-1:200

Tissue Specificity

CNS stem cells.

Contents

Rabbit IgG in phosphate buffered saline, pH 7.4, 150mM NaCl, 0.02% sodium azide and 50% glycerol, 0.4-0.5mg/ml BSA.

Immunogen

A synthesized peptide derived from human Nestin

Purification

Affinity-chromatography

Storage

Store at -20°C for one year. For short term storage and frequent use, store at 4°C for up to one month. Avoid repeated freeze-thaw cycles.

Anti-Nestin Rabbit Monoclonal Antibody - Protein Information

Name NES

Function

Required for brain and eye development. Promotes the disassembly of phosphorylated vimentin intermediate filaments (IF) during mitosis and may play a role in the trafficking and distribution of IF proteins and other cellular factors to daughter cells during progenitor cell division. Required for survival, renewal and mitogen- stimulated proliferation of neural progenitor cells (By similarity).

Tissue Location

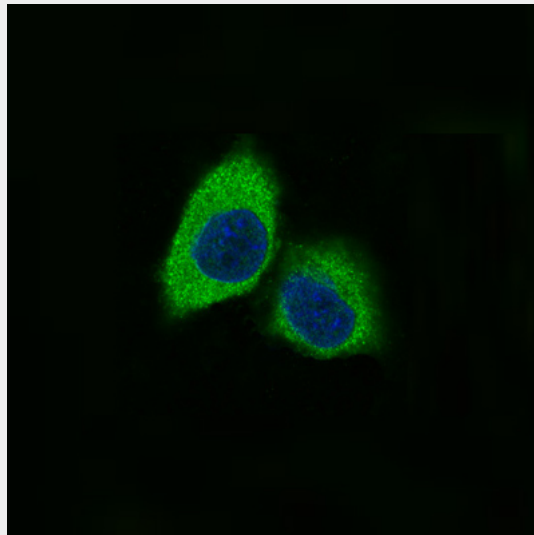
CNS stem cells.

Anti-Nestin Rabbit Monoclonal Antibody - Protocols

Provided below are standard protocols that you may find useful for product applications.

- [Western Blot](#)
- [Blocking Peptides](#)
- [Dot Blot](#)
- [Immunohistochemistry](#)
- [Immunofluorescence](#)
- [Immunoprecipitation](#)
- [Flow Cytometry](#)
- [Cell Culture](#)

Anti-Nestin Rabbit Monoclonal Antibody - Images



Immunofluorescent analysis of PC12 cells, using Nestin Antibody.