

Anti-DYNLL1/Pin Rabbit Monoclonal Antibody
Catalog # ABO13833**Specification****Anti-DYNLL1/Pin Rabbit Monoclonal Antibody - Product Information**

Application	WB, IHC, IF, ICC, IP
Primary Accession	P63167
Host	Rabbit
Isotype	Rabbit IgG
Reactivity	Rat, Human, Mouse
Clonality	Monoclonal
Format	Liquid

Description

Anti-DYNLL1/Pin Rabbit Monoclonal Antibody . Tested in WB, IHC, ICC/IF, IP applications. This antibody reacts with Human, Mouse, Rat.

Anti-DYNLL1/Pin Rabbit Monoclonal Antibody - Additional Information

Gene ID 8655

Other Names

Dynein light chain 1, cytoplasmic, 8 kDa dynein light chain, DLC8, Dynein light chain LC8-type 1, Protein inhibitor of neuronal nitric oxide synthase, PIN, DYNLL1 {ECO:0000303|Ref.9, ECO:0000312|HGNC:HGNC:15476}

Calculated MW

10366 MW KDa

Application Details

WB 1:500-1:2000
IHC 1:50-1:200
ICC/IF 1:50-1:200
IP 1:50

Subcellular Localization

Cytoplasm, cytoskeleton. Nucleus. Mitochondrion. Upon induction of apoptosis translocates together with BCL2L11 to mitochondria.

Tissue Specificity

Ubiquitous..

Contents

Rabbit IgG in phosphate buffered saline, pH 7.4, 150mM NaCl, 0.02% sodium azide and 50% glycerol, 0.4-0.5mg/ml BSA.

Immunogen

A synthesized peptide derived from human DYNLL1

Purification

Affinity-chromatography

Storage

Store at -20°C for one year. For short term

storage and frequent use, store at 4°C for up to one month. Avoid repeated freeze-thaw cycles.

Anti-DYNLL1/Pin Rabbit Monoclonal Antibody - Protein Information

Name DYNLL1 {ECO:0000303|Ref.9, ECO:0000312|HGNC:HGNC:15476}

Function

Acts as one of several non-catalytic accessory components of the cytoplasmic dynein 1 complex that are thought to be involved in linking dynein to cargos and to adapter proteins that regulate dynein function (By similarity). Cytoplasmic dynein 1 acts as a motor for the intracellular retrograde motility of vesicles and organelles along microtubules (By similarity). May play a role in changing or maintaining the spatial distribution of cytoskeletal structures (By similarity). In addition to its role in cytoskeleton and transport, acts as a protein-protein adapter, which inhibits and/or sequesters target proteins (PubMed:10198631, PubMed:15193260, PubMed:15891768, PubMed:16684779, PubMed:30464262, PubMed:37696958). Involved in the response to DNA damage by acting as a key regulator of DNA end resection: when phosphorylated at Ser-88, recruited to DNA double-strand breaks (DSBs) by TP53BP1 and acts by disrupting MRE11 dimerization, thereby inhibiting DNA end resection (PubMed:30464262, PubMed:37696958). In a subset of DSBs, DYNLL1 remains unphosphorylated and promotes the recruitment of the Shieldin complex (PubMed:37696958). Binds and inhibits the catalytic activity of neuronal nitric oxide synthase/NOS1 (By similarity). Promotes transactivation functions of ESR1 and plays a role in the nuclear localization of ESR1 (PubMed:15891768, PubMed:16684779). Regulates apoptotic activities of BCL2L11 by sequestering it to microtubules (PubMed:10198631, PubMed:15193260). Upon apoptotic stimuli the BCL2L11-DYNLL1 complex dissociates from cytoplasmic dynein and translocates to mitochondria and sequesters BCL2 thus neutralizing its antiapoptotic activity (PubMed:10198631, PubMed:15193260).

Cellular Location

Cytoplasm, cytoskeleton, microtubule organizing center, centrosome. Chromosome. Cytoplasm, cytoskeleton. Nucleus Mitochondrion. Note=Upon induction of apoptosis translocates together with BCL2L11 to mitochondria (PubMed:18084006). Recruited to DNA double-strand breaks (DSBs) by TP53BP1 when phosphorylated at Ser-88 (PubMed:37696958)

Tissue Location

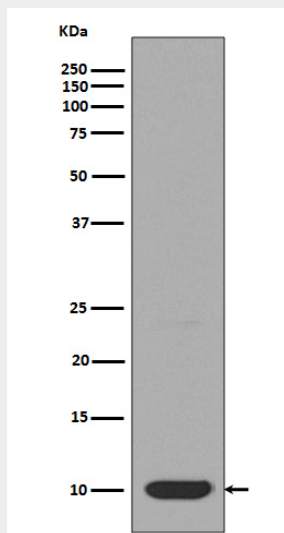
Ubiquitous (PubMed:8628263). Expressed in testis (PubMed:22965910).

Anti-DYNLL1/Pin Rabbit Monoclonal Antibody - Protocols

Provided below are standard protocols that you may find useful for product applications.

- [Western Blot](#)
- [Blocking Peptides](#)
- [Dot Blot](#)
- [Immunohistochemistry](#)
- [Immunofluorescence](#)
- [Immunoprecipitation](#)
- [Flow Cytometry](#)
- [Cell Culture](#)

Anti-DYNLL1/Pin Rabbit Monoclonal Antibody - Images



Western blot analysis of DYNLL1 expression in HeLa cell lysate.