

**Anti-Lin28B Rabbit Monoclonal Antibody**  
**Catalog # ABO13832****Specification**

---

**Anti-Lin28B Rabbit Monoclonal Antibody - Product Information**

Application	WB, IF, ICC, IP, FC
Primary Accession	<a href="#">Q6ZN17</a>
Host	Rabbit
Isotype	Rabbit IgG
Reactivity	Human
Clonality	Monoclonal
Format	Liquid

**Description**

Anti-Lin28B Rabbit Monoclonal Antibody . Tested in WB, ICC/IF, IP, Flow Cytometry applications. This antibody reacts with Human.

**Anti-Lin28B Rabbit Monoclonal Antibody - Additional Information**

**Gene ID** 389421

**Other Names**

Protein lin-28 homolog B, Lin-28B, LIN28B, CSDD2

**Calculated MW**

27084 MW KDa

**Application Details**

WB 1:500-1:2000<br>ICC/IF 1:100-1:500<br>IP 1:50<br>FC 1:100

**Subcellular Localization**

Nucleus. Nucleus, nucleolus. Cytoplasm. Predominantly nucleolar (PubMed:22118463). In Huh7 cells, predominantly cytoplasmic, with only a subset of cells exhibiting strong nuclear staining; however, the specificity of the polyclonal antibody used in these experiments has not been documented (PubMed:16971064)..

**Tissue Specificity**

Expressed at high levels in the placenta and, at much lower, in testis and fetal liver (PubMed:16971064). Isoform 1 is only detected in placenta and in moderately and poorly differentiated hepatocellular carcinoma cells (at protein level). Isoform 2 is detected in fetal liver, non-tumor liver tissues, as well as well-differentiated tumor tissues (at protein level). Tends to be up-regulated in triple-negative (ER-,PR-,HER2-) breast tumors, as well as in liver, ovarian, and thyroid carcinomas (PubMed:22118463)..

**Contents**

Rabbit IgG in phosphate buffered saline, pH 7.4, 150mM NaCl, 0.02% sodium azide and 50% glycerol, 0.4-0.5mg/ml BSA.

**Immunogen**

A synthesized peptide derived from human Lin28B

**Purification**

Affinity-chromatography

Storage

**Store at -20°C for one year. For short term storage and frequent use, store at 4°C for up to one month. Avoid repeated freeze-thaw cycles.****Anti-Lin28B Rabbit Monoclonal Antibody - Protein Information****Name** LIN28B**Synonyms** CSDD2**Function**

Suppressor of microRNA (miRNA) biogenesis, including that of let-7 and possibly of miR107, miR-143 and miR-200c. Binds primary let-7 transcripts (pri-let-7), including pri-let-7g and pri-let-7a-1, and sequester them in the nucleolus, away from the microprocessor complex, hence preventing their processing into mature miRNA (PubMed:<a href="http://www.uniprot.org/citations/22118463" target="\_blank">22118463</a>). Does not act on pri-miR21 (PubMed:<a href="http://www.uniprot.org/citations/22118463" target="\_blank">22118463</a>). The repression of let-7 expression is required for normal development and contributes to maintain the pluripotent state of embryonic stem cells by preventing let-7-mediated differentiation. When overexpressed, recruits ZCCHC11/TUT4 uridylyltransferase to pre-let-7 transcripts, leading to their terminal uridylation and degradation (PubMed:<a href="http://www.uniprot.org/citations/19703396" target="\_blank">19703396</a>). This activity might not be relevant in vivo, as LIN28B-mediated inhibition of let-7 miRNA maturation appears to be ZCCHC11-independent (PubMed:<a href="http://www.uniprot.org/citations/22118463" target="\_blank">22118463</a>). Interaction with target pre-miRNAs occurs via an 5'- GGAG-3' motif in the pre-miRNA terminal loop. Mediates MYC-induced let- 7 repression (By similarity). When overexpressed, isoform 1 stimulates growth of the breast adenocarcinoma cell line MCF-7. Isoform 2 has no effect on cell growth.

**Cellular Location**

Nucleus. Nucleus, nucleolus. Cytoplasm Note=Predominantly nucleolar (PubMed:22118463). In Huh7 cells, predominantly cytoplasmic, with only a subset of cells exhibiting strong nuclear staining; however, the specificity of the polyclonal antibody used in these experiments has not been not documented (PubMed:16971064).

**Tissue Location**

Expressed at high levels in the placenta and, at much lower, in testis and fetal liver (PubMed:16971064). Isoform 1 is only detected in placenta and in moderately and poorly differentiated hepatocellular carcinoma cells (at protein level). Isoform 2 is detected in fetal liver, non-tumor liver tissues, as well as well- differentiated tumor tissues (at protein level). Tends to be up- regulated in triple-negative (ER-,PR-,HER2-) breast tumors, as well as in liver, ovarian, and thyroid carcinomas (PubMed:22118463)

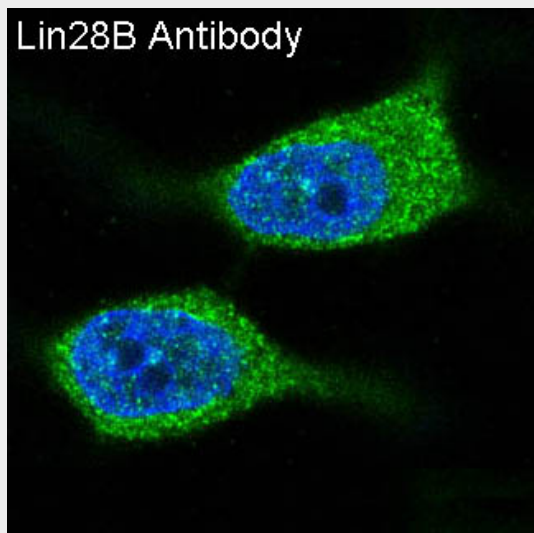
**Anti-Lin28B Rabbit Monoclonal Antibody - Protocols**

Provided below are standard protocols that you may find useful for product applications.

- [Western Blot](#)
- [Blocking Peptides](#)
- [Dot Blot](#)

- [Immunohistochemistry](#)
- [Immunofluorescence](#)
- [Immunoprecipitation](#)
- [Flow Cytometry](#)
- [Cell Culture](#)

#### Anti-Lin28B Rabbit Monoclonal Antibody - Images



Immunofluorescent analysis of MCF-7 cells, using Lin28B Antibody.