

**Anti-SCARB1/Sr Bi Rabbit Monoclonal Antibody**  
Catalog # ABO13826

**Specification**

---

**Anti-SCARB1/Sr Bi Rabbit Monoclonal Antibody - Product Information**

Application	WB, IHC, IF, ICC, FC
Primary Accession	<a href="#">Q8WTV0</a>
Host	Rabbit
Isotype	Rabbit IgG
Reactivity	Rat, Human, Mouse
Clonality	Monoclonal
Format	Liquid

**Description**

Anti-SCARB1/Sr Bi Rabbit Monoclonal Antibody . Tested in WB, IHC, ICC/IF, Flow Cytometry applications. This antibody reacts with Human, Mouse, Rat.

**Anti-SCARB1/Sr Bi Rabbit Monoclonal Antibody - Additional Information**

**Gene ID** 949

**Other Names**

Scavenger receptor class B member 1, SRB1, CD36 and LIMPII analogous 1, CLA-1, CD36 antigen-like 1, Collagen type I receptor, thrombospondin receptor-like 1, SR-BI, CD36, SCARB1, CD36L1, CLA1

**Calculated MW**

60878 MW KDa

**Application Details**

WB 1:500-1:2000<br>IHC 1:50-1:200<br>ICC/IF 1:50-1:200<br>FC 1:50

**Subcellular Localization**

Cell membrane ; Multi-pass membrane protein. Membrane, caveola; Multi-pass membrane protein. Predominantly localized to cholesterol and sphingomyelin-enriched domains within the plasma membrane, called caveolae.

**Tissue Specificity**

Widely expressed.

**Contents**

Rabbit IgG in phosphate buffered saline, pH 7.4, 150mM NaCl, 0.02% sodium azide and 50% glycerol, 0.4-0.5mg/ml BSA.

**Immunogen**

A synthesized peptide derived from human Scavenging Receptor SR-BI

**Purification**

Affinity-chromatography

**Storage**

**Store at -20°C for one year. For short term storage and frequent use, store at 4°C for up to one month. Avoid repeated freeze-thaw cycles.**

**Anti-SCARB1/Sr Bi Rabbit Monoclonal Antibody - Protein Information****Name** SCARB1**Synonyms** CD36L1, CLA1**Function**

Receptor for different ligands such as phospholipids, cholesterol ester, lipoproteins, phosphatidylserine and apoptotic cells (PubMed:<a href="http://www.uniprot.org/citations/12016218" target="\_blank">12016218</a>, PubMed:<a href="http://www.uniprot.org/citations/12519372" target="\_blank">12519372</a>, PubMed:<a href="http://www.uniprot.org/citations/21226579" target="\_blank">21226579</a>). Receptor for HDL, mediating selective uptake of cholesteryl ether and HDL-dependent cholesterol efflux (PubMed:<a href="http://www.uniprot.org/citations/26965621" target="\_blank">26965621</a>). Also facilitates the flux of free and esterified cholesterol between the cell surface and apoB-containing lipoproteins and modified lipoproteins, although less efficiently than HDL. May be involved in the phagocytosis of apoptotic cells, via its phosphatidylserine binding activity (PubMed:<a href="http://www.uniprot.org/citations/12016218" target="\_blank">12016218</a>).

**Cellular Location**

Cell membrane; Multi-pass membrane protein. Membrane, caveola {ECO:0000250|UniProtKB:Q61009}; Multi-pass membrane protein Note=Predominantly localized to cholesterol and sphingomyelin-enriched domains within the plasma membrane, called caveolae

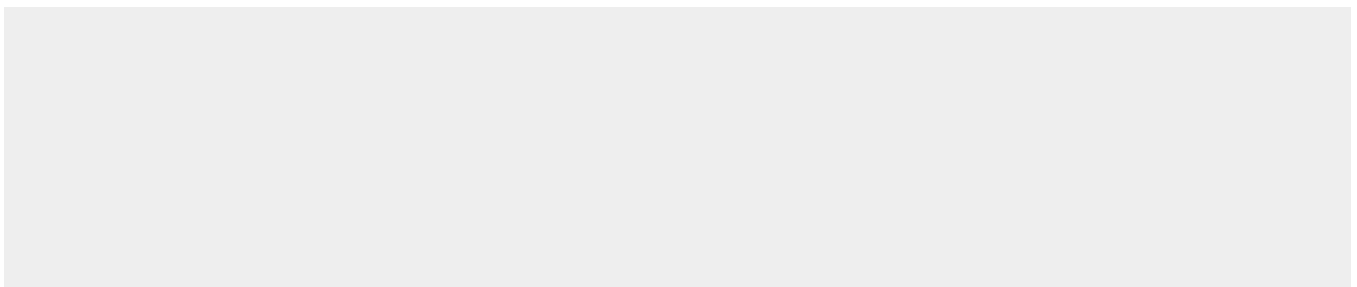
**Tissue Location**

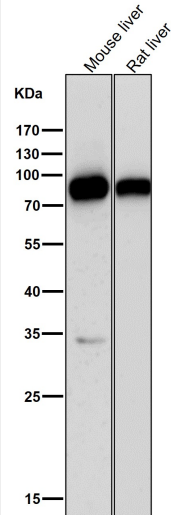
Widely expressed.

**Anti-SCARB1/Sr Bi Rabbit Monoclonal Antibody - Protocols**

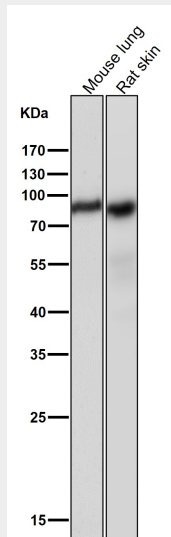
Provided below are standard protocols that you may find useful for product applications.

- [Western Blot](#)
- [Blocking Peptides](#)
- [Dot Blot](#)
- [Immunohistochemistry](#)
- [Immunofluorescence](#)
- [Immunoprecipitation](#)
- [Flow Cytometry](#)
- [Cell Culture](#)

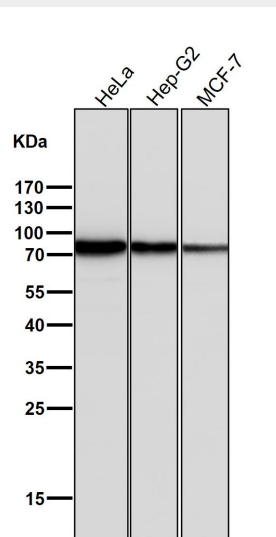
**Anti-SCARB1/Sr Bi Rabbit Monoclonal Antibody - Images**



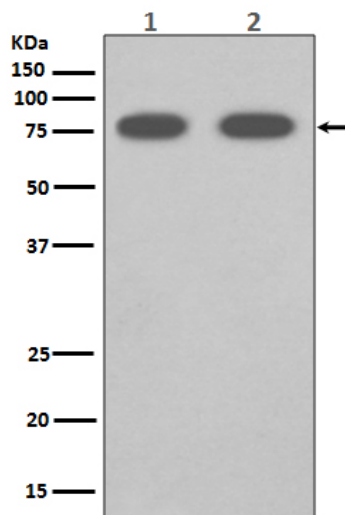
All lanes use the Antibody at 1:1K dilution for 1 hour at room temperature.



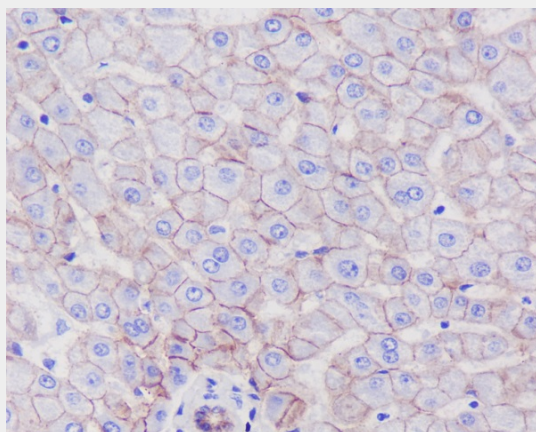
All lanes use the Antibody at 1:1K dilution for 1 hour at room temperature.



All lanes use the Antibody at 1:1K dilution for 1 hour at room temperature.



Western blot analysis of SCARB1 expression in (1) Human fetal liver lysate; (2) Mouse liver lysate.



Immunohistochemical analysis of paraffin-embedded human liver, using SCARB1 Antibody.